

THE MOLE

Brighton 13—27 Nov. 1969 6d.

THE QUEEN & US.....

Personal wealth	£60,000 000	Average female wage	£12
Income from state	£475,000	male wage	£20
Upkeep of palace	£300,000	Old Age pension	£5

.... all We want is a small increase in Our £9000 a week....



2% of the **POPULATION**
OWN 55% of the **WEALTH**

Home Sweet Home for Asa... All Expenses Paid

It is refreshing at a time when even our Royal Family are thinking of "moving into smaller premises" to find one person remains convinced of the need to live in a style according to his status.

Sussex University's famous amphibious don and Vice-Chancellor, A. Briggs, has a piercing intellect and enquiring mind that has earned him respect and renown enough to confer upon him the honour of tea at Claridges with President Nixon (and 60 others). It is fitting that he should live in a spacious mansion called Ashcombe House near Lewes. His paltry salary of no more than £5000 is eaked out by

daylight snatch

Several members of faculty have been seen leaving the University bookshop without paying for the copies of "The Brighton Film Review" they are carrying. There is a polite sign by copies of the BFR on sale there, asking for money to be left in a special box. About 10 copies of each issue - which costs 2/-, is locally produced and non-profit making - are taken, either without paying or by people leaving 1d or 2d. The bookshop authorities have admitted that most of the thieves are members of faculty, but deny that they are able to take any action. Several students each year are fined (on average £10 each) in Brighton courts for stealing books they need, but can ill-afford to pay for.

Ragged Trousers

A recent University of Sussex Union set of Council minutes revealed the Union's interesting sense of financial priorities. A certain Mr Nigel Law applied for £5 to remedy damage caused to a pair of his trousers during the course of his duties at a General Meeting. This astonishing request was instantly granted. It is a pity that the Union does not send a memorandum to Mr Law requesting that in future he does not attend these meetings except in jeans.

grants
are almost sufficient for
beer

IF YOU EAT AT GERRY'S
64, QUEENS RD

6/- for 3 courses

his meagre earnings outside, as a contributor to The Times, Purnell Publishing, New Statesman (Society, Scientist, Worlds etc.) Listener, Spectator, Observer etc. etc.; his broadcasts on every available channel here and abroad; and his modest volumes on Chartism, the BBC, Labour Studies, the First World War, the Second, the 19th Century, History, Education and all subsidiaries of the above.

It is obvious that this man is in urgent need of financial assistance. This plainly explains the item in the University accounts for last year: "Vice-Chancellor's House - Furniture and Fittings ... £2209."

(Rumours that Prof. Briggs has the Ideal Home (and Garden) Prize in the bag are easily scotched. He is a modest man.)

BLACK TIES?

The MOLE has learnt from the University of Sussex Union that last week the university Monday Club applied to use the 'private rooms' of the Refectory for a celebration dinner on the fourth anniversary of Smith's Rhodesia U.D.I. The application was found to be "technically incorrect" and the Union sent it back to blackshirt Ormowe and his horrible gang. Successive applications have been refused on similar grounds.



This week the MOLE questioned a Mr Brimelow (one of a pair of nasty twins). His interesting version was that a dinner was definitely decided upon, and likely to take place in the Refectory, but that the time had not yet been fixed. The MOLE finds the prospect of these people sinking their horrible fangs into any such kind of celebratory feast quite disgusting.

**RAJMAHAL
RESTAURANT**

Best Curry in Brighton
11, Duke St. Tel. B'ton 29517.
Student Discount.

students welcome

Casade Spaghetti

20, Middle St.

TEACHERS TO STRIKE?

For the first time in years, the two major Teachers' Unions, the N.U.T. and the much smaller, all male, so-called "career teachers" N.A.S. are co-operating in pressing for an interim pay award of £135 for all teachers. Although they got a 7% pay award last year, this has already been more than cancelled out by inflation, and demands from the rank and file of the Head Teacher dominated N.U.T. forced them to take action and demand an interim increase (the next round of pay negotiations were not scheduled to start until 1970).

BURNHAM BONFIRE THREAT


The fact that firemen won a 10% increase by threatening strike action on Nov. 5th has encouraged teachers, as it is a further hole in the Government's already tattered Incomes Policy, and is seen by the deputy secretary designate of the N.U.T. as showing "that the Government is looking more favourably at the claims of lower paid workers".

Now that the Burnham Committee has offered a miserly £1 a week increase, the question is whether the leadership of the N.U.T. and N.A.S., pressurised by the rank-and-file, will have the courage to take effective nation-wide strike action.

Starving Colleges

It is about time the Federation of Brighton students did something about the allocations by local authorities to college unions. On this system of allocation Sussex University gets £10 per student, Brighton College of Art £4, Brighton College of Ed. £3, Chelsea College of Physical Ed. (Eastbourne), Seaford College of Ed. £3, Lewes Technical College 7s6d and Brighton Tech 7bob.

Sussex has of course extra financial commitments, for example the ever useful Sports Fed, but the main reason for the size of the University's grant is that it is given under Royal Charter - a position of privilege. The forthcoming creation of a Polytechnic in Brighton will redress the balance to some extent, but while the binary system stands the inequalities between the unions of one student body will remain. Maybe some people should kick their unions into action.



ABOUT THE MOLE

- 1) Meetings every Sunday at the office 7pm.
- 2) Sellers (Sales Staff) every other Thursday at the office 11pm.

SELLERS / PHOTOGRAPHERS /
ILLUSTRATORS / REPORTERS /
EVERYBODY NEEDED NEEDED NEEDED.

WORTHING TORY CAPERS..



printing hassle

By 16293 votes the National Graphical Association members accepted the new pay agreement with the B.F.M.P. . This must constitute one of the biggest sellouts in a long time. The NGA union chiefs strongly recommended to their members to accept in a new sheet which contained: "We would particularly like to ask members to remember that this is the highest offer ever made by the employers and to be aware of the immediate consequential effects upon overtime and shift rates". But the only shift rate that has been increased is the treble shift which has been increased to bring it up to 33 1/3% above the basic which is £17.17.0.. For this treble shift workers have had to concede leaving their

The Duke of Norfolk presenting the Queen's Award to Industry to Kearney and Trecker for increased exports. What he didn't mention was the massive increase in profits and productivity there compared to wages, and the accident rates and bad conditions in the factory, especially bad ventilation and heating.

machines during the lunchbreak, (halfhour). Where treble shifts are worked machines work 24 hrs a day, 7 days a week and produce incredibly increased productivity and profit.

The recommendation failed to show its members the true facts--printers wages since 1938 have in fact decreased in purchasing power and failed to gain ground at the same speed as other industries. This also is an astonishing fact as in a recent Prices & Incomes report on productivity, the printing industry came top in productivity. An illustration of this is that 30 years ago dustmen in London earned £2.10.0 and Compositors £4.9.0..

This is all the more unacceptable as in the last decade there has been a revolution in the printing industry. Productivity and production figures have soared, and yet the NGA Union chiefs completely ignore this & ask their members to "cooperate in taking all practical steps which will make for greater productive efficiency.". The actual agreement was for a £2 a week increase over 2 years - £1 this & £1 next --:nothing on equal pay, nothing on overtime rates, nothing on redundancy deals.

I would recommend that all NGA members take a hard look at their National Union and ask the question why their sister union, SOGAT, rejected the latest offer and is on a headon collision with the bosses. Will we get the support of NGA if it comes to a strike nationally? We might get the rank and file but somehow I cannot see the officials nationally backing us. I wonder why.

by a Brighton printworker.

The Guardian of Nov 7 revealed the parallel manoeuvrings of Monday Club and National Front groups in Surbiton and Worthing.

A so-called Worthing debating society has been set up to agitate for Powell, and to get the sitting Tory MP Terence Higgins to adopt Powellite views on Race and Rhodesia. The society consists of 5 members of the Worthing Conserv.Assoc. (3 of them members of the National Front). The new tactic of the Front is to use Powell's popularity within the Conservative party to infiltrate Conserv. associations, not in its own name, but in the name of "loyal conservatives". In this they are invaluable aided by the ambiguous policy of local associations.

SPONTANEITY?

The chief official at Worthing was unable to say to Mole whether the National Front was active or not there--since there is no check or the outside affiliations of members, and he personally only knew of the existence of the Worthing Debating Soc... "A few days ago". He agreed that the recent outbreak of "pressure groups" in Southern constituencies were hardly the "spontaneous efforts" claimed by their organisers--but was unable to confirm the Guardian allegations. More significantly, he could not say if any action would be taken over members affiliated from instance to the National Front - "since this was a new problem". This obviously will facilitate the new N.F. tactic, while their threat is glossed over by sympathetic Tories.

BRIGHTON SCENE

The same forces were at work in Brighton last week, and again centred around the guru of the right, John Ormowe. An open meeting at the University of the Conservative Association, under the benign chairmanship of Brian Leahy, was held to sort out a fight over the sacking of Ormowe from the Committee and the Constitution (such as it was) of the club. The votes showed a 59/50 split between Ormowe's Powellite faction and the Heathites. Such incestuous feuding would present little interest of itself, but that Ormowe was seen entering the Heidelberg Guest House at the end of last week. It was here that the slanderous last edition of Sussex Tory was produced by Ormowe.

So what? Well the Heidelberg was at one time the centre of the Sussex Racila Preservation Society, and was prosecuted under the race relations Act two years ago. It obviously remains a centre of such activity.

announcement

The MOLE would like to make a belated acknowledgement to Ralph Steadman for providing us with an excellent cartoon for the cover of issue no. four.

JEFF DEXTER

sounds off about

Edgar BROUGHTON
Strawbs
Steamhammer
Success
Heaven
Fox

and guest star

DAVID BOWIE

6.30pm. for 6.50pm.

DOME

WEDNESDAY

19

NOVEMBER

5/6-8/6-11/6-14/6-17/6

Expansion Middle Street, Brighton
or Dome Box Office, tel 682127.

moletalk:

So Philip wants some more pay. The rising cost of living has hit Buckingham Palace: such necessities of life as renovating the chandeliers (£5500) or garden parties (15000 each) may go.

But the high cost of keeping the royal family above national assistance level is not the real point. The monarchy is not out of date, not just another relic to flog off to the American tourists.

Capitalism's power is based on the control of the means of production - the factories - by a tiny minority - the ruling class. This control is not maintained primarily by force but by

consent. The monarchy keeps that consent coming in. For instance, the Duke of Norfolk's little ritual at Hollingbury last week.

The royal family is the pinnacle of a wellpublicised system of rank and hierarchy; dukes, earls and all the rest. The pageantry and performance that sets them apart distracts from the real power relations in our society and makes them harmless. A state opening of Parliament is worth 5000 cannisters of tear gas. In a genuinely free and socialist society there would be any need for such expensive smokescreens.

Mole's Readers...

Sirs,

I noted with interest and amusement your cover picture of 30th October, and while I am sure that all the technical skills of the most accomplished photomontage compiler could not reproduce, with any veracity, the highly complicated, compact and subtle emissions of what Mr Powell's brain can conceive, it would have been more felicitous to have parenthesized the human sheep in the background batman-wise, emphasizing the fact that they are, unfortunately, real figments of Mr Powell's political imagination, than that he is the shepherd of somewhat lost and misguided sheep.

Yours faithfully,
John J. Grieve

Dear Sirs,

In your editorial reply to a letter from a member of the Hove Youth Shelter Group, you rejected SHELTER's "naive reformism that seeks to solve the national housing problem by housing individual families".

Yet it is true to say that the ERP spends some of its time housing individual families. It is also true that SHELTER attempts a political solution on a larger scale. (Remember some recent opposition to SHELTER on just this point?)

It is undoubtedly true that not all those who work for SHELTER are Socialists. However, surely anyone who is genuinely concerned with the desperate plight of the many homeless and sub-standard-housed families should welcome attempts to alleviate this suffering on all levels.

To reject short-term help for those in immediate need because it might reduce the 'pressure of suffering' that might hasten the political changes needed in the long-term shows, in my opinion, a callous disregard for the families in need.

Yours sincerely,
Albert Beale

Editorial Reply: Because we're concerned we reject "short term help" - a code word for "no politics", "no politics" means the slums stay.

Dear Mole,

With 7 issues of the MOLE now completed it should now be possible to evaluate its merits and demerits.

The potential of such a paper is great (with a print order of 2000 an issue it could provide the essential basis for the building of a strong movement amongst the youth of this town). If, however, we are going to use this journal for the definite purpose of creating a Socialist force in Brighton there will have to be some serious thinking done by the editors. And, I suggest, some major policy changes.

Obviously, unless we are aiming at a purely passive readership, the MOLE should be tied to a local Socialist Youth organisation; offering itself both as the voice and the political metronome for discussion of such an organisation. It should seek to agitate for the political line of this group; giving impetus to its activities and attracting new people to its ranks.

But all this is in the future. No such organisation yet exists. It should therefore be the policy of the MOLE to promote the building of such a group. To do this it must in future orientate itself around specific campaigns on issues like EDUCATION: HOUSING: SOCIAL FACILITIES: THE STRUGGLES OF YOUNG WORKERS & APPRENTICES: EMPLOYMENT PROBLEMS

What we should be attempting to present to the youth of Brighton is a paper that is capable of expressing their frustrations and stifled ideals under Capitalism - and a paper that offers some leadership - both theoretical and practical - in their struggle for a better future for themselves.

The possibilities are many and encouraging. We have to grasp them now. What is needed is for the MOLE to establish itself as a political entity, and not simply to go on from week to week spewing back undigested scrap of news whose political value is often doubtful.

M.C.
2. Montpellier.Rd.

SPRINGBOCKS VS DEMO

The anti-apartheid demonstration in Leicester last Sat. 8th Nov. was a failure in that we did not stop the rugby match (E. Midlands v. Springbocks), but it provided useful experience in tactics.

An interesting comment from the police was that 1000 of them on duty were not a man too many in dealing with the 2000 odd demonstrators. Given another 1000 of us and we could have broken through and stopped the match. The Govt. refused to pay for the extra police protection: the organisers themselves had to pay £10000 for the 1000 fuzz provided which is £10 for each. How much can the organisers afford to lose?

Every time a serious, organised attempt was made to break through the police cordon, at least 100 people succeeded. There were various approaches to the grounds and if the demonstrators had been better organized enough would have got through to the grounds entrance, because the fuzz did not have sufficient strength to maintain several cordons at once.



LISTEN YOU COMMIE BASTARDS.
KEEP POLITICS OUT OF SPORT.

The National Front were most noticeably present amongst the many obvious Special Branch and CID infiltrators. Enough photographs must have been taken to keep the Special Branch clerks busy for at least a month.

The saddest thing about the demonstration was that it consisted almost entirely of student youth. The Unions and the Trades Council had not been contacted by the Young Liberal organisers. Their role was also shown up in an announcement in which they disclaimed all responsibility for any arrests, as they had not planned the demonstration to proceed as it did.

Editorial Note: On MOLE we are discussing these questions: as yet to no conclusion. Come to the Sunday meetings and join in. It's your paper. But we do all agree on this: if you are at college, join the Socialist Society, and if there isn't one, form one. If you're at work join the union. Again, if there's no union; start getting the place unionized. If you want to know who to contact we'll try and help. If you're at school also get organized. Remember we'll give you all the support we can...if you'll let us know what's going on.

HOMELESSNESS, HIGH RENTS: A DELIBERATE COUNCIL POLICY...

RENTS INCREASE?

Is Alderman Theobald of the Housing Committee trying to pull a fast one? Any rent increase for January should have been publicly debated in September at the Council meeting; however, no announcement was made, and no debate took place. Brighton Council is £42 millions in debt, £17 millions on the Housing Committee alone, and are not in a long-term position to hold back an increase. The Council have never shown themselves to be benevolent; investigations suggest a high degree of political and financial speculation.

This year the Housing Committee have managed to balance the books by a) creating a surplus on last year's budget and b) cutting

In the short term, rents may be kept level, but the tenant is still being exploited. Much-needed accommodation is not being provided, and the surplus is created out of the rent he pays. 15/- to 18/- in every £1 is used to pay high interest rates on the Council debts, and if a surplus is allowed then there is very little left to spend on actual housing improvements. For instance, the amount spent in 1967/8 was only £580,229 out of a total income from rents and grants of £1,879,671

In the long term the tenant looks like getting a very bad deal. The Council's plans involve an increase on the amount of money they are borrowing, to make up for this year's cut in building. Already they are in trouble over escalating costs of the big modernisation scheme in Whitehawk, and may decide to rebuild instead.

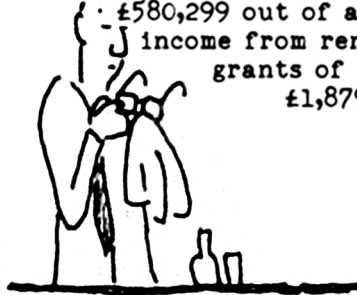
The longer the loan, the higher the interest; with the increase in the total debt, more money will have to be paid

annually to the money-lenders. This means only one thing: a sharp increase in rents; if not this year then next year, the year after, indefinitely, as the Council have no plans for reducing their debt. In fact they are creating a new Capital Fund to get past restrictions on borrowing.

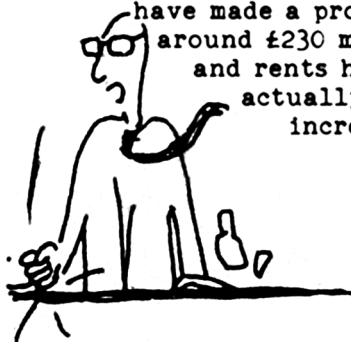
WHAT ARE THEY AFRAID OF?

It now seems likely that associations such as the G.L.C. tenants and the Brighton Rents Project have had a significant effect on local Council nerves. In the last 5 years, whilst wages have been frozen, builders have made a profit of around £230 million per annum, and rents have been increased; however, 5,000 G.L.C. families are now refusing to pay the increase. In Brighton the tenants' associations and the Rents Project have been fighting Council policy - is the short-term freezing of rents an appeasement?

Last year the amount spent on housing improvements was only £580,299 out of a total income from rents and grants of £1,879,671.



In the last 5 yrs, builders have made a profit of around £230 million pa and rents have actually increased.



WE FEEL
OUR PROGRESS
HAS BEEN
AMAZING.



There are also wider possibilities; the present Government ruling limits the individual rent increase to about 7/6; by containing increases now the Council may be able to obtain a much higher rise in future. They could be gambling on a) a change in Government policy or b) a change of Government....

TENANTS BEWARE! Theobald may still try to slip in an increase without making a public announcement. If he does, he will be acting illegally.

WHOSE DEVELOPMENT?

In cutting the building programme, the Council are planning to provide only 230 new homes in 1970, over half of which are in the disputed Sloane Street area--144 flats-- obviously unsuitable for families with children. In fact only nineteen houses are definitely planned (Housing Committee report, 1-10-69). As seventeen council houses were sold in the last three months, one can conclude that the Council are not particularly concerned with the plight of hundreds of Brighton families who haven't got a decent place to live.

One reason for the Council's lack of concern over housing families in Brighton may be the future plans for the overspill towns of the area, particularly Newhaven Peacehaven and Seaford. The town

planners are preparing for large areas of land to be given over to house construction--presumably by private developers. So for the hundreds of families who cannot afford the deposit on a private house and don't have the means to obtain a mortgage, the future looks black. Anyway, why should they want to move out of Brighton?

BILLETTING

The answer to this lies in the plans for industrial development. There is no future for the factory owners in Brighton, as factory floor space is already saturated; less than 2,000sq.ft. expansion is planned in the next 40 yrs. Therefore they are going to move out to Newhaven, where they estimate 335.3% expansion in industry by 2011-- only 42 yrs. away. So if you want to live in Brighton you can't have a home and you can't have a job. In this way the state of consciousness is induced in people to force them to move out of town. Wait--you still have a choice. 143% industrial development is planned for Lancing on the other side of town..

Project news

1) For a United Tenants' Association

At the first meeting of the New Executive last Thursday, decisions were taken on the setting up of street/area groups to build the United Tenants Assoc. campaign among private tenants. Secondly approaches to the Council Tenants Associations were initiated. These plans will be outlined to the next General Meeting to be held at 8.00pm on Thursday next, 20 Nov. at the Labour Club, 179 Lewes Road.

2) Climax to squatting campaign

After 8 days of legal jingoism in the High Court Lord Justice Stamp has gone into retreat to consider his decision on the application by the Territorial Army to evict the families. He will materialise from his state paid holiday to deliver his judgement sometime this week. The Project, together with a Defence Committee from the Trades Council and the local LP, are laying plans to cope with a possible eviction.

In this event many people will be needed to help with temporary arrangements, and to defeat the Council's plans to opt out of its responsibilities. If you want to help, then come to the meeting or contact the Project through the Mole Office.

ART CENTRE SET-TO

Dear Sir,

I was truly saddened by the vast numbers of factual errors in your article last week on the new Gardner Centre for the Arts. Perhaps I may correct some of the more glaring of them.

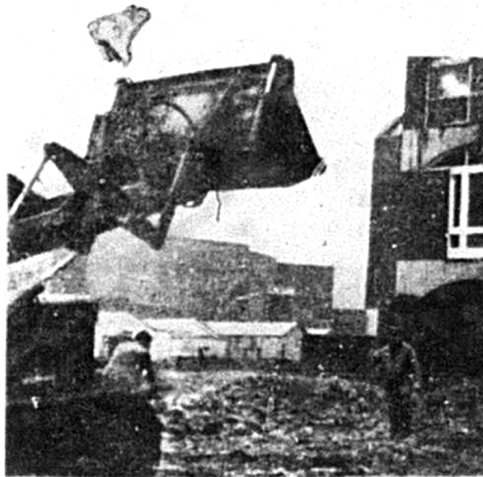
1. You say "Far from providing such facilities as may be necessary to assist your artists" - of the over one hundred concerts and exhibitions the Arts Centre has mounted so far, the vast majority of them have been by young and up-and-coming artists, and one of the Centre's main aims is to encourage such talent.
2. "Norman MacKenzie..... hopes to maintain a hold on the policy of the Centre"..... - Norman MacKenzie is head of a completely different organization associated with the University - "Media Services" - and neither he nor Media Services have ever had or hoave at the present anything whatsoever remotely to do with the policy of the Arts Centre.
3. "By refusing University and local money" - Both the University and Brighton Corporation do give us money.
4. "Exhorbitant rates for amateur and student performers" - No rates have yet been decided upon.

I am only sorry that you have been misled. The Arts Centre is intended to be "a cultural centre for the whole of Brighton." We are planning to hold plays, concerts, exhibitions, poetry readings, film shows, ballet, jazz and blues concerts. The most flexible building for the Arts in Britain is situated here on Brighton's doorstep - and we hope all Mole readers will take advantage of it.

Yours faithfully,
Alan Marmion
Assistant to Director
Gardner Centre of Arts

The Mole thanks Mr Marmion for his letter and apologises for any factual errors or seeming slurs. But we say there is still a valid critique to be made of the Arts Centre concept - and this not in a spirit of negative dogmatism. The ethos of professional art, especially in the theatrical programme, with the emphasis on professional acting companies, submerges the undoubtedly exciting technical innovations of Sean Kenny & Co, and is surely incompatible with the proclaimed intention of bringing people into contact with the "arts" (and not those who habitually go to London theatres). The concept of professional productions has come first - a

limited budger and the need to plan ahead are partial justifications - but although there are extensive facilities, the lack of participation yet by local artists, and the prominence of Fenella Fielding, late of the Chichester Arts Festival, points to the cultural attitude personified by Brighton Festival. There is the vital question of the content of culture which cannot be separated from its presentation and context: technical novelties are fun, they add new things to old play, but unless they are used with the intention of increasing and liberating the consciousness, unless all sectors of the community are able to become participants (active and passive) the culture is limited and static, a spectacle within a given framework of society.



Last week the Arts Centre was opened to the press, and this week a Mole correspondent was taken on a conducted tour. First some statistics which show the framework in which the Arts Centre has to work.

THE BREAKDOWN

The total cost is £321,000, with £176,000 from Dr Lyddon Gardner, £20,000 from the Gulbenkian Foundation, £7,000 from the Arts Council and £58,000 from the University Grants Committee. There are then running costs of £60,000 per annum - £20,000 supplied by the University ("Unusually generous" of Guardian), £6,000 from the Gulbenkian, £12,500 from the Arts Council, (the Arts Council supplies £1,500 to Arts Labs) and £2,500 from Brighton Council. This leaves £20,000 a year to come from receipts from the box-office and bar. According to Dr Eysselinck the policy of the Centre is not to charge rates to anyone wishing to use the facilities in the Centre, but the equipment will be "hired out" with the technicians needed to use them..

COMMUNITY FOCUS

Talking to Dr Eysselinck it is clear that the policy of attracting people from the town is a sincere one - but the point is, what kind of people are going to be attracted to the productions at the Arts Centre? When Gulbenkian gave the first gift to the Centre it was to be used to support the programme of artists in residence,

whereby several artists exhibit their work regularly, and a season of plays. The theatrical events scheduled (the theatre with its electrical gadgets and stereophonic system is the main thing in the Centre) are entirely large professional productions. "A new British play, a new Cuban play, and the great Spanish classic "Celestina" make up our first professional season".

Since at least half the acting profession live in Brighton and the locality, these would seem to be the people naturally attracted by these performances. Perhaps they also hope to be the main users of the Centre. The first play, "Comrade Jacob", about the Diggers in the time of Cromwell may well prove to be a relevant social commentary - but this will be limited to an audience of regular theatregoers and students. And the cultural ethos projected does not invite participation and extension.

NO ROCK

The musical programme features the London Mozart players, the Delme String Quartet, and apart from last week's Mike Westbrook Jazz concert, there is no inclusion of progressive blues or rock. Talks are going on between the UOS Blues Society and the Centre for a Pink Floyd event sometime in February, and this is all. Yet. And this is the form of contemporary music with the widest social impact and liberating potential.

In Brighton there is a large group of talented performers and artists who have no connection with professional companies. In the summer they held a successful anti-Festival, alternative to the Brighton Festival. The need to hire equipment and to plan in advance means that small groups are unable to use the facilities. The need to clear a cool £20,000 a year means that only big professional companies are economically viable. And this is the framework of the Brighton and Chichester Festivals which Dr Eysselinck is concerned to be reproducing. member of the local group commented: "I'd gladly lead a March on that place."

wall smash syndrome

Another daring new innovation at the Arts Centre is the demolition of walls. For over three weeks, men have been.. occupied in knocking down the walls at either side of the Falmer House loading bay. Neither the University planning officer, nor the estates manager, nor the surveyor could be contacted in order to find out what the purpose of all this was. But perhaps the answer is that now there is a magnificent view of the new Arts Centre from the road entirely unobstructed.....

uos blues soc.
at Jimmy's

NOV. 13. Duster Bennet....
NOV. 20. Free....

oldie but goldie

Germinal is one of a series of twenty three novels about the members of one working class family under the Second Empire. Because its theme is both more dramatic and general, thus enabling Zola to define himself as a Social Realist, it is probably the best of the lot.

Etienne, an itinerant worker---intellectual, stumbles into a job down the mines. Almost immediately the management threatens a wage cut to survive the depression of the 1860's. It is met by a strike, in which Etienne plays a leading, if not, charismatic role. A major part of the subsequent theme deals with his increasing commitment to Socialist theory and the First International, through which he tries to bring his work mates into contact with nascent international revolutionary forces. The fate of Etienne and the miner's strike are linked pessimistically to a predictable failure. After a heroic 2 months struggle against the bosses and starvation the strikers are forced to go back to work at the new wage rate, and their leader increasingly isolated from his defeated comrades, is driven to leave the town.

To the crude Marxist critic such a depressing end excludes Zola from the thin ranks of genuine Socialist Realists. And yet, by his choice of topic, and his scientific treatment of it, Zola managed to produce one of the best examples of Marxist literature yet available to us. Unlike his mentor-Flaubert--Zola saw himself as a definite social entity. He fought hard against slipping back into the past to escape the realities of present day life, and to try and understand contemporary phenomena. Germinal, one feels, succeeds on

quite well in coming to grips with this reality. Equipped with a very coherent awareness of his own historical position, Zola brings into his analysis the dominant philosophies of his epoch, Marxism and Darwinism, thus avoiding both the feeble sentimentalism of Stalinist authors and the political atheism of their bourgeois counterparts.

The struggle is seen, not in terms of goodies v baddies-- stereo-typed workers-- but in terms of the confused struggle between labour and capital. Both classes are treated as human beings; but the author realises that the Capitalists, caught within the contradictions of their own system, standing between Humanity and its social dreams and objectives, must be fought and defeated; and that the only force capable of doing this is the proletariat, (which although it is often condemned as a mob carries the hope for the future of mankind.)

The book is also condemned for its fatalism by these crude appliers of the dialectic. What they fail to see is Zola's central point: The point he makes consistently through the whole series. Fate according to Zola, will continue to control the destinies of men as long as the social forces that move history go unrecognised. Without the proper scientific method of analysis, history will always appear to be determined by a shadowy and mystical force called either God or Fate.

Thus, in Germinal, we have a book that not only served a useful social role when it was written by exposing the harsh brutality of the Bonapartist regime under Louis Napoleon, but also provides us with the essentials of Marxist literature; the correct method of analysis leading to the right kind of socio/political conclusions.

Marxists can ask no more.

Throughout the book there is no real analysis of why LSE did explode, or of what should have been done to avoid defeat. It is full of snide remarks against I.S.; the political group whose members successfully led the previous struggles in LSE. I.S. is an 'old Left sect' for 'irrelevant' and 'boring' theoretical discussion. Its attempts to ensure that the majority of students could be won over to support the Left in a confrontation are 'sell-outs'.

The failure of the Instant Confrontation and hysterical student power is seen at LSE today. Most students are dispirited, and the euphoric rantings of the ultra-Left seem to them just irrelevant. In the situation now where any serious attack will be met with instant crackdown by the authorities, backed up by the State, 'revolution in one college' is a hopeless proposition. For student activists to get anywhere they must relate to the mass of students, and they must develop real links with the working class. This demands organisation, and it demands theory (if it sounds less frightening - you must have some idea of what you're doing). Instant revolution is dead, but Hoch and Schoenbach don't even make the attempt sound interesting.

RECORDS

UMMA GUMMA - PINK FLOYD

UMMA GUMMA contains one record of new studio-recorded material, and one of old material live. These are typical Floyd pieces - but only one track "Saucerful of Secrets" is strikingly good. The others lack the addition of anything except a certain live looseness. These recordings of their "classic" numbers ("Astronomie Domine", "Set the Controls") define their music as it is played live (last summer at the Dome was much more vital), but they are not particularly interesting, and especially compared with their new material.

The sound quality of the studio track is much better, the tracks are written individually by each member. These are as might be expected, totally different to previous recordings - with greater individuality than the "More Soundtrack". There is little to say but that they are excellent, except for Waters' composition with lots of bird noises, and the first stereo recording of a man fly-swatting. If you like the Floyd already, you will probably like this. But if you think this is far out, wait for Beefheart's.



LED ZEPPELIN II

LED ZEPPELIN II is much as you would expect: flashy work with a dubious relation to the blues. Page again proves his mastery of the guitar, squeezing out notes of amazing sweetness, Robert Plant is still trying, hopelessly, to put some soul into his screams, and the other two are more than adequate on bass and on drums. But the group as a whole is in a rut, most of the material is a repetition of the first album. Led Zeppelin's achievement is in providing about the ultimate in stage display of spectacular virtuosity - it's a pity the album is not live. The only advantage of the studio is extensive stereo multi tracking, which takes your mind off the poverty of the material and the lyrics, which show no progression. They come across as tighter and more together now, but significant is the crediting to Zeppelin of all the numbers, while it is obvious that one, "Bring It On Home" is a Sonny Boy Williamson composition. The interesting use of electronics on the first track "Whole Lotta Love" being the only successful innovation, may indicate the direction they will take if they stay together.

BOOKS

LSE : The Natives are Restless. Paul Hoch and Vic Schoenbach. Sheen and Ward. 10/-.

Today a book that looks good - topical exciting, committed - and which is in fact plain bad - politically naive and dead boring as well.

None of the intensity or excitement of the LSE struggle (so different from the wall-to-wall carpeted imbecility of Sussex) is captured by the book.

Hoch and Schoenbach have, it appears, little idea of what they are doing, let alone why. The strategy is confrontation at all costs, the motivation may be solidarity with the Third World, may be because it is such a gas. Right at the end of the book there is an afterthought: it appears the British working class is also taking political action. Yet the relevance of this to the students, or to anyone else, is left unexplained.

Last year at LSE ended in defeat. Students were victimised, Bateson and Blackburn were sacked. Apparently that doesn't matter, provided there's an explosion it's okay.

MOLE'S DIARY

Cinema

BFT:

Thurs Nov 13 (till Sat): Dr Strangelove, 2.30, 6.00, 8.30pm.

Fri Nov 14 only: Premature Burial (USA '61) 11pm.

Sat Nov 15 only: Anatomy of a Murder (Preview) 11pm.

Sun Nov 16 only: The Whisperers (Dame Edith Evans) 6.00, 8.30pm.

Mon Nov 17 (till Wed): Anatomy of a Murder, 2.30, 7.30pm.

Thu Nov 20 (till Sat): Lord of the Flies/Morgan, 2.30, 7.30pm.

Sat Nov 22 only: A Man for all Seasons, (Preview) 11pm.

Sun Nov 23 only: It Happened One Night (Clark Gable) 2.30, 6.00, 8.30pm.

Mon Nov 24 (till Sat): A Man for all Seasons 2.40, 6.00, 8.30pm

CLASSIC:

Thurs Nov 13 (till Wed.): Mackenna's Gold, I.O., 4.45, 8.30,

Fri Nov 14 only: Balled of a Soldier, (U.S.S.R.), 11pm

Sat Nov 15 only: The Enemy Below, 11pm.

Thurs Nov 20 (till Wed.) The Boston Strangler, (U.S.A.)

CONTINENTALE:

Thurs Nov 13 (till Sat): Blow Up: Two Women, 1.35, 5.7, 8.39.

Sun Nov 16 (till Sat): L'Astragale, 1.51, 5.19, 8.47.

Sun Nov 23 (till Sat): The Blood Drinkers: Black Cat, 3.48, 6.35, 9.18.

DUKE OF YORKS:

Thur Nov 13: Frankenstein Must Be Destroyed, 2.15, 5.35, 8.35.

Sun Nov 16 (till Thur): The Italian Job, 3.45, 6.0, 8.35,

Sun Nov 23 (till Mon): Pendulum The Desperados, 2.0, 5.25, 8.50,

Wed Nov 26 (till Sat): The Fox: 7 Golden Men,

EMBASSY:

Thur Nov 13 (till Sat): Water-Hole: Gunn (U.S.A. '67), 2.19, 5.24, 8.49.

Sun Nov 16 (till Thur): Under Capricorn (U.S.A. '49), 2.21, 5.9, 7.57.

Thur Nov 20 (till Sat): The Game is Over, (Fr. '66), 12.30, 3.51, 7.12.

Sun Nov 23 (till Thur): Will Penny, 1.56, 5.10, 8.24,

CO. OF ED. Tuesdays at 7pm.

Nov 18. Once There Was A War. (Denmk. '66): Meet Me Jesus (U.S. '66).

Nov 25. The Wages of Fear: Un Chien Andalou, (Fr. '53, '29)

CO. OF TECH. Thursdays at 7.30pm.

Nov 13: Sat. Night + Sunday Morning.

Nov 20: Taste of Honey. (U.K. 65)
Nov 27: L-Shaped Room; (U.K. '64

U. OF. SUSSEX. All in Room A2.

Thurs Nov 13: Les Girls (U.S.A) '67, 6pm.

Tue Nov 18: Kameradschaft (Ger. '31), 3.15pm.

Wed Nov 19: Round Up 4+7pm.

Thur Nov 20: The Bad and The Beautiful, (U.S.A. '52), 6.30pm.

Fri Nov 21: Acetone, (It. '61) 2.15pm.

Mon Nov 24: Planet Of The Apes. (U.S.A. 68) SF. Soc. 7pm.

Wed Nov 28: Psycho (U.S.A. '60) 4+7pm.

Thur Nov 27: Jeu de Massacre. (Fr. '66) 6pm.

Thur Nov 20: (till Sun), Dylan: Don't look back, Brighton
Combination-Phone for details.

theatre

Brighton Combination: Portable Theatre coming soon at the Combination.

Theatre Royal Brighton: Mon Nov 10 for 2 weeks. Come As You Are; Mon-Thur, 7.45; Fri 8.15; Sat 5.00 + 8.15

dances

Fridays: CoT. Club 66 Disco, 2/6 7.30pm.

CoA. Friday Night Club, Disco, 9pm.

Fri.+Sat. Brighton Rock, Brighton Combination, 9pm.

Nov 14: Respect CoT, Club 66.

Nov 21: Switch, CoT Club 66.

Nov 22: CoT Dance + Sitar Music 8pm.

noise

Wednesdays: Folk Club at "Prince George", Trafalgar St., 8pm.

Thursdays: U.O.S. Blues Soc., Jimmy's, Steine St. 8pm.

Fridays: Jazz at the Imperial Hotel, Queen's Rd. 8pm.

Folk at Springfield Hotel, Springfield Rd.

Saturdays: Folk at Lewes Arms, Mount Place, Lewes.

Thur Nov 13: Duster Bennet, Jimmy's 8pm.

Fri Nov 14: The Taverners, Springfield Hotel, Springfield Rd.

Michael Garrick's Sextet, Imperial Hotel, 8pm.

Sat Nov 15: Incredible String Band, Royal Festival Hall.

Sun Nov 16: London St. Commune Benefit Concert, Chalk Farm,

Edgar Broughton, Fairport Convention. Election.

Mon Nov 17: U.O.S. Jazz Club, Graham Collier, JCR. 8pm.

Tues Nov 18: John Mayall, Portsmouth Guildhall, 7.45pm.

Soft Machine + Thelonicious Monk, Ronnie Scott's, 46, Frith St. WI.

Wed Nov 19: Edgar Broughton, Strawbs, Steamhammer, Jeff Dexter,

Success, Dome 6.30pm.

Keith Jones, Folk, Prince George, Trafalgar St.

Thur Nov 19: Free, UOS. Blues Soc., Jimmy's, 8pm.

Fri. Nov 21: John Foreman, Springfield Hotel.

politics : misc

Sun Nov 16 Southern Africa Mobilisation, details: Sthn.

African Solidarity Cmtee, 211 Ladbroke Grove, W.10.

Mon Nov 17 Krishna Consciousness Lectures, Conway Hall, Red Lion Sq., W.C.1. 7.30pm. free

Tues Nov 18 UOS. Soc. Soc. The Housing Scandal-Ian McDonald, R.112, 5pm.

Thurs Nov 20 SUSAC Meeting, UOS. Shop Area, 7pm.

Frid Nov 14: Forum on Vietnam Org. for London Demo. Eng./Am. Common Room. 1pm.

Sat Nov 15th: International Demonstration-U.S. troops out of Vietnam. SCCM-L.

Thurs Nov 20: IS. meeting.. Royal Exchange 8pm.

Southover St. "The Third World".

Coaches going from Btn. to Twickenham; Sat Nov 22nd; Contact Nov. 22nd. Cttee UOS. Union Office-

(Phone 66577) cost less than 10/- Club, 179, Lewes Rd. 8pm.

Sat Nov 22 Talk on Radiesthesia + Human Sensitivity, Friends Centre, Ship St. 7.30.

Mon Nov 24 Public Meeting on the Marina, Dome, 8pm.

Tues Nov 25 UOS. Soc. Soc., Rascism in Britain--Obi Egbuna R.112. 5pm.

Brighton Public Library: North St 9-7pm. Wk., 4pm. Sat.

Citizen's Advice Bureau: 17, Ditchling Rise, 61664.

Combination: 76, West St. 24590. I.S.: 53, Old Steine.

Kemptown Labour Party: 167, Lewes Rd.

Law Society (Legal Aid): 113, Chancery Lane. W.C.2.

NCCL.: 37, Park Crescent. 65706.

Rent Tribunal: Anston House, 137 Preston Rd. Btn.

Screw: Support Communications For a revolutionary Europe + World 46, Park Crescent.

SCC (M-L): 7, Portland Place. 64547.

Unicorn Boofshop: 50, Gloucester Rd.

Late Chemists; Westens, 12, Coombe Terrace, Lewes Rd. 9am.—10pm. 65354.

24 Hour Garage: The Endeavour Preston Circus. 506331.

Last Trains: to London from Btn. 11.10pm. & back 11.50.

Small-Ads.

GIRL: wanted to cut trousers into bellbottoms....fair price...

APPLY: Ben-H. F.H.P.H.

published by : (R. Murray, D. Gray and J. Wickham.)

The Mole is published at: II, Sudeley St. 688942.

Copywrite Mole Newspapers.

Printed by: Focodirect (Printers) Ltd. 26, Southover St., Brighton.

MILLIES

THE BEST SELECTION OF POSTERS IN BRIGHTON

SMILE BAZAR