



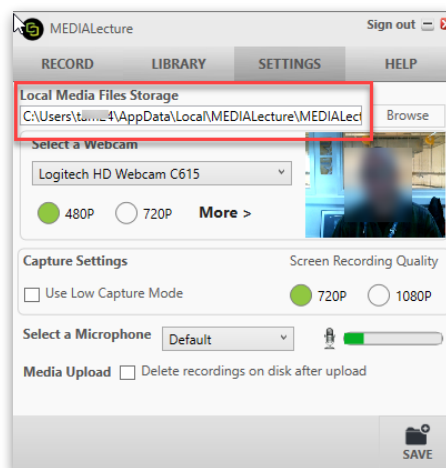
How to find a 'local' copy of a MEDIAlecture video

Very occasionally you may find that MEDIAlecture's upload of your video to our MediaStream service is too slow, or perhaps fails entirely. If you wish to get the video, to attempt to upload it from a different machine, or a wired connection in your office, you can find the video is copied into a folder on the computer itself.

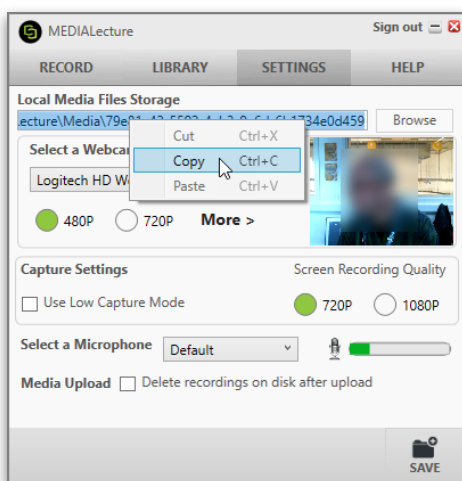
These directions will show you how to find that video (Directions for Apple Mac follow below).

On a Windows 10 PC

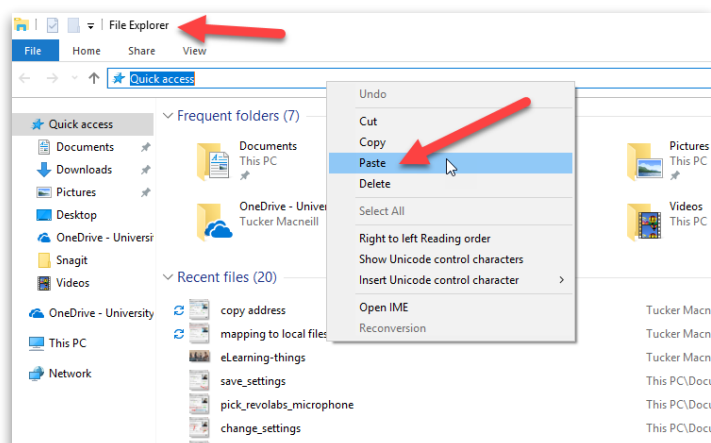
Launch MEDIAlecture in the normal way. And go to the Settings tab in the MEDIAlecture window.



Select the entire file-address and right-click with your mouse and copy the address.

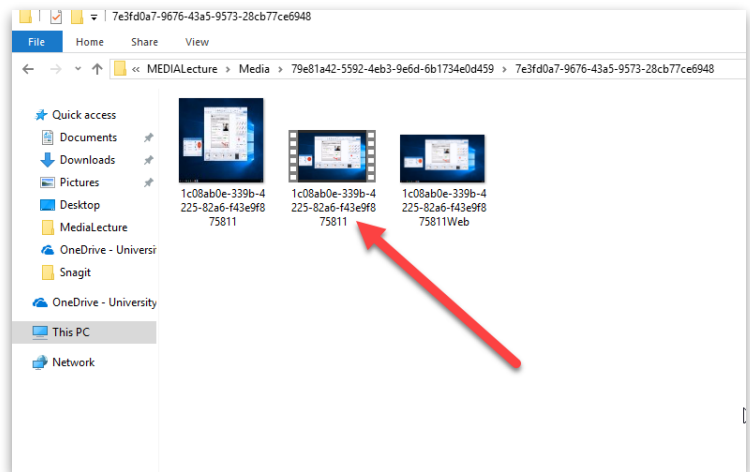


In the computer's File Explorer, highlight "Quick Access" and then right-click your mouse to then paste it in the address bar. Then hit Enter on your keyboard.



Open the folder called Media. In the folder you will see sub-folders of long-number-names. Within those folders, you will finally see the video file. It's the one that looks like 'Film' Drag this onto a USB Stick, or move it into your OneDrive.

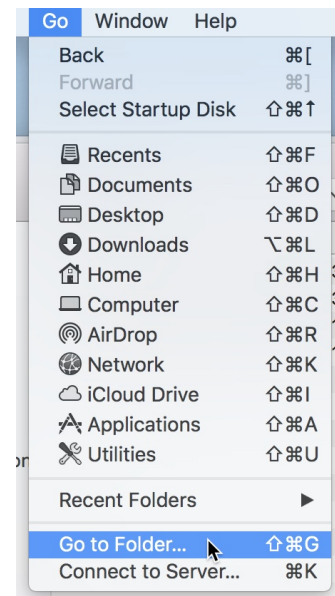
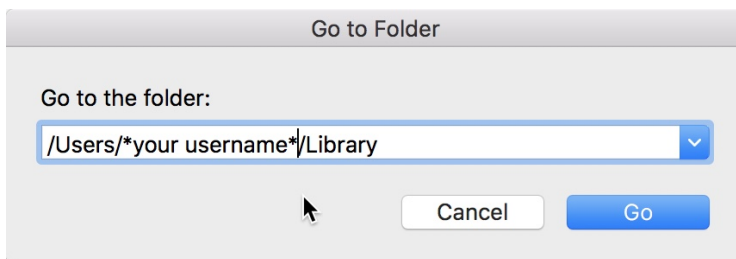
You can then upload the video at a later time/date.



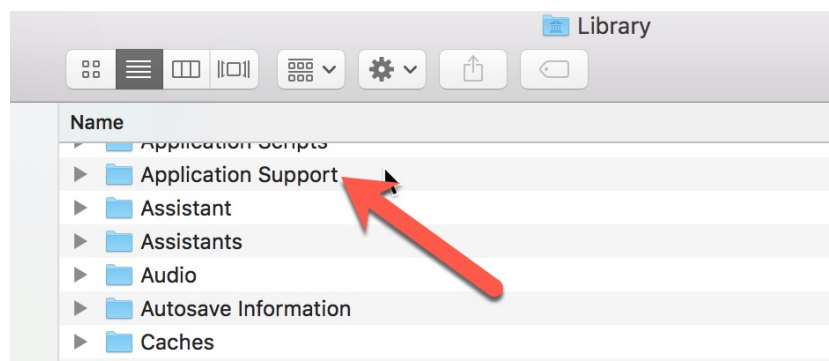
On an Apple Mac:

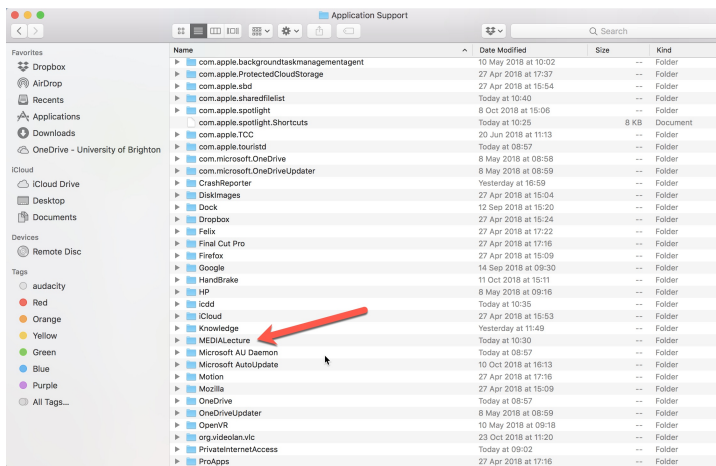
Click on Go on the Menu Bar, and click on Go to Folder.

In the search window the below text replacing *your username* with your actual alpha-numeric Uni username. Click on the Go Button.



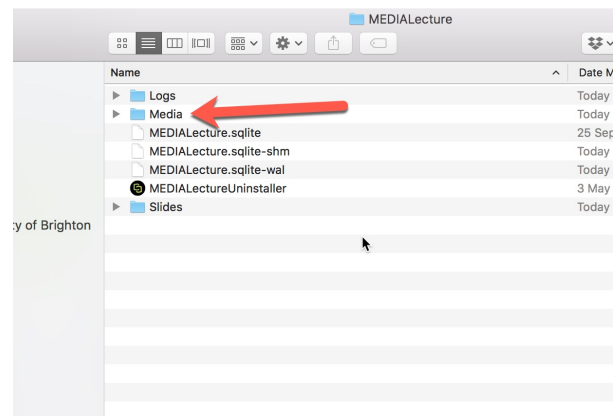
In the Library, open the Application Support folder.





Scroll down alphabetically to the MEDIA Lecture Folder. Open the folder.

In the MEDIA Lecture folder, Open the Media folder.



The video files are the ones that say .mp4 after them. Drag this onto a USB Stick, or move it into your OneDrive.

You can then upload the video at a later time/date.

