

"I confirm that I have a Learning Support Plan for which includes adjustment deadlines as recommended by the Disability and Dyslexia Team, and agreed by the School. I understand the deadline for my assessment has been adjusted (as per the required School protocol) and that this should be taken into consideration when my assessment is marked/graded".



Land, Law and Legends .

By Esme Rotella



Contents .

Place .

- 3) **Burnham Market Poisoners**
- 5) **Burnham Market**
- 6) **Marshland**

Research .

- 10) **Aboriginal Beliefs**
- 11) **Harry Cory Wright**
- 12) **Materials Of The Marsh**
 - a. **Marram Grass**
 - b. **Seaweed**
 - c. **Mud**

Resolutions .

- 19) **In To The Marsh**
- 22) **Marsh Textures**
- 23) **Archaeological Finds**
- 27) **Resolutions**

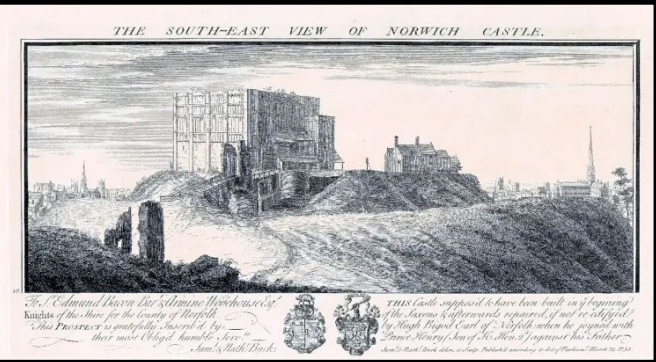
- 29) **Bibliography**

Burnham Market Posiners .



In the small market town of Burnham Market in the 1830s, three families lived side by side Frances and James Billing, next door was Mary and Peter Taylor, and next door to them were Robert and Catherine Frary. Peter and Frances were having an affair and James found out about it, catching them in the act not once, but twice, once in the shared privy. According to village gossip, Catherine, 40, was also playing away, having an affair with an unknown man by the name of Mr Gridley.

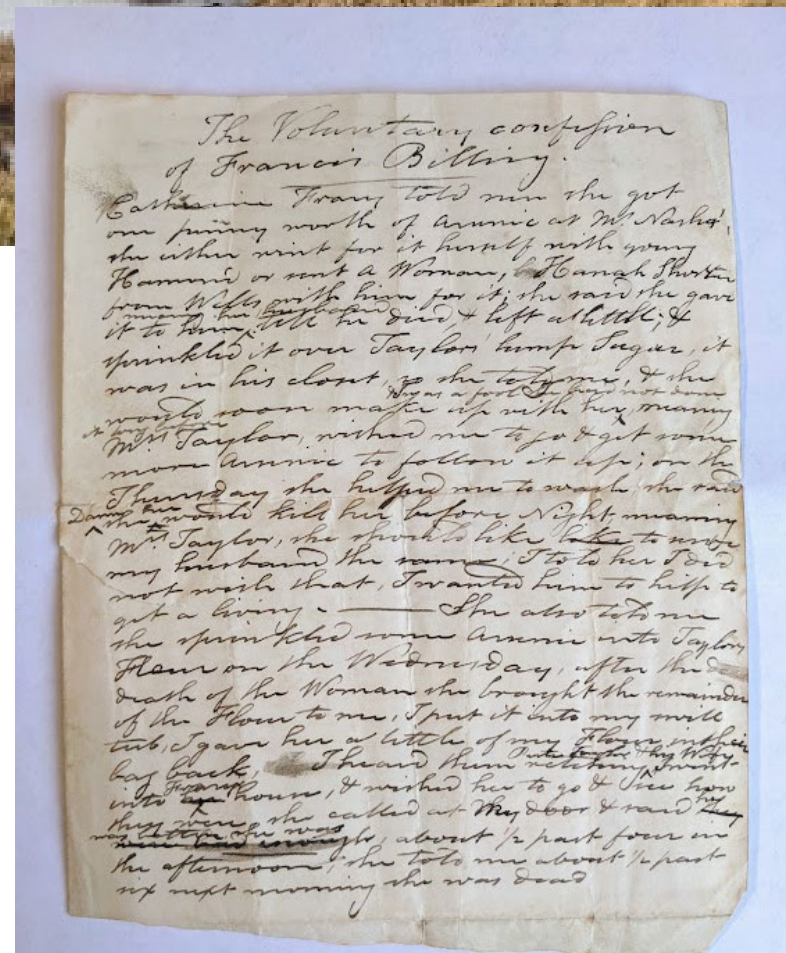
The illicit goings on in both Frances and Catherine's households was of great interest in a small village. By 1835, both Frances and Catherine had earned themselves reputations as loose women, the latter said to be devoted to "drugs, charms and conjurations" who associated with witches and believed in magic.



The women started to unravel and leading them to a plot to poison their husbands. What the villagers thought initially to be cholera in the water turned to suspected foul play by Catherine and Frances, not only did they poison their husbands but also a child from the village.

It became national news. Female killers were few and far between, let alone serial killers. The case was reported on in all major newspapers and even in the American press. Frances and Catherine were committed for trial and found guilty, Three days later, the women were executed in front of Norwich castle and a crowd that had gathered from miles around and which was disproportionately female

The fear and shock following this tragedy caused the houses of Faray and Billing to be abandoned, as if the ground they were on was infected with poison too.



Catherine Faray and Frances Billing, two women with reputations poisoned by local gossip, though there went on to commit the murder by poison of their husbands and a child from the

183 years later, the very same pharmacy they purchased the poison from closed with no one able to take ownership, due to astronomical rises in house prices (driven by second home owners). Villagers reacted by erecting a fake English heritage sign that reads,

'The Pharmacy 1830-2019 Burnham Market; a dying village, poisoned by wealth. Finally dispensed

Burnham Market.

Host Arms



North Street



Possible Location Cottages



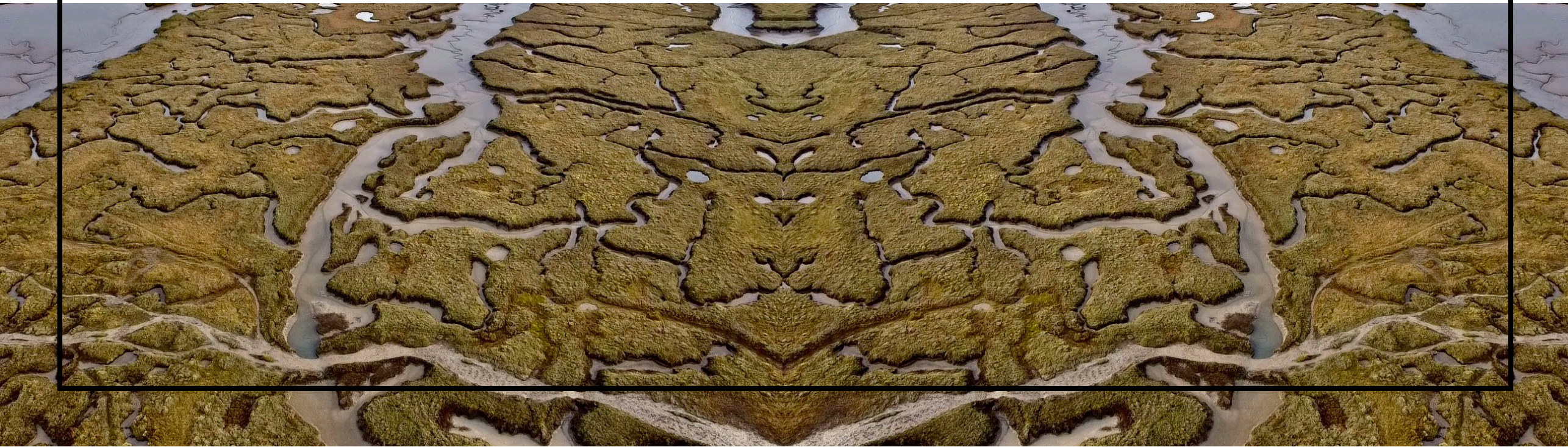
Pharmacy

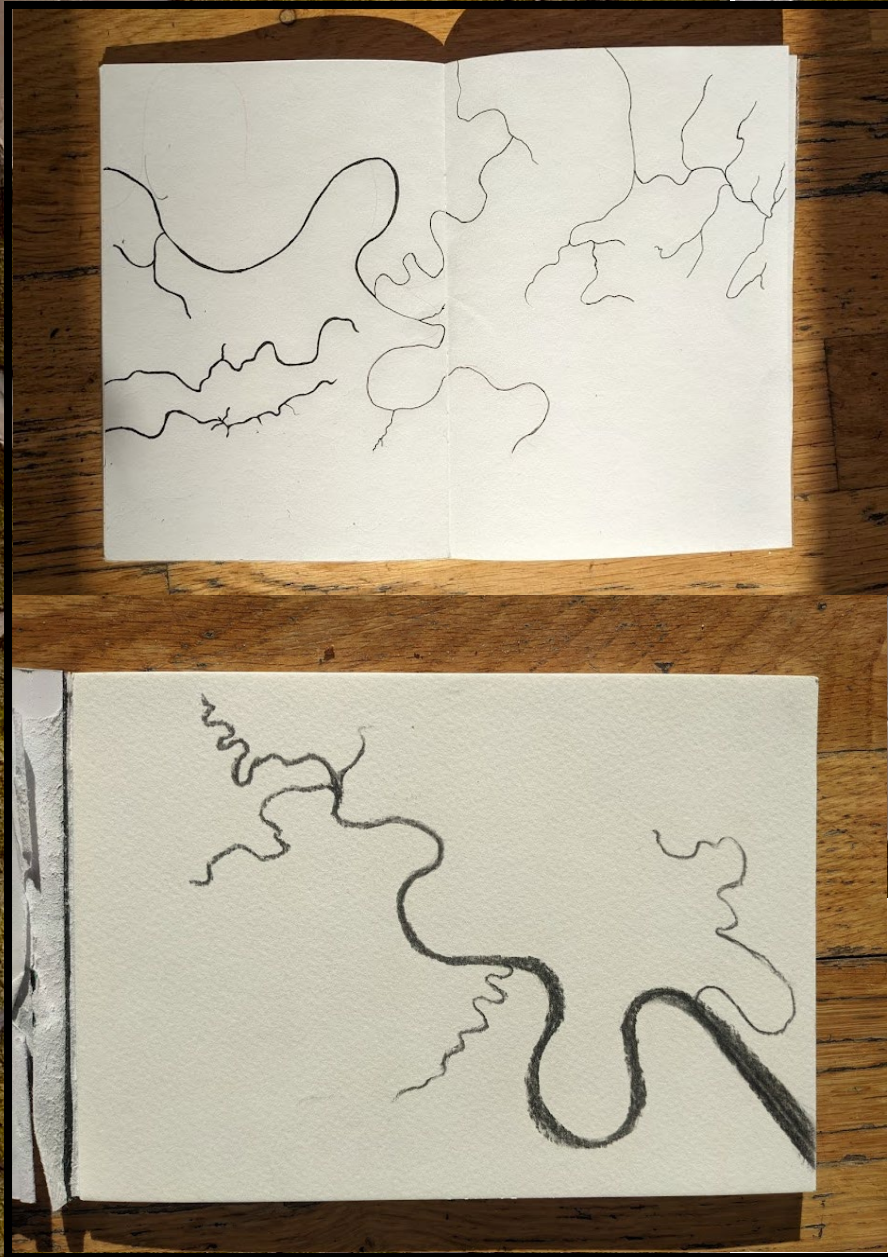




Marshland.

The marshland is a transitional place, in constant movement, I draw the tides cyclical nature and the marshes importance to the local community .

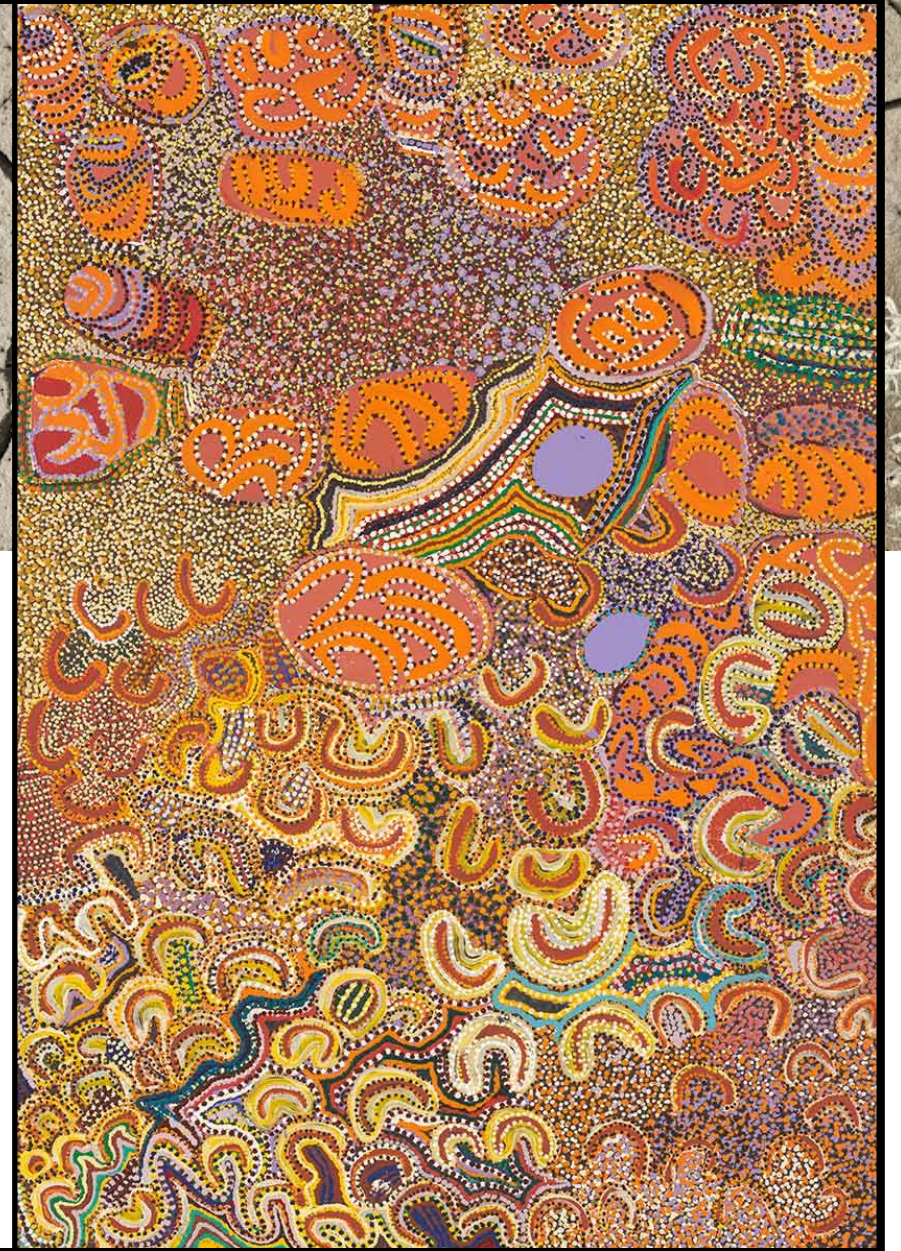
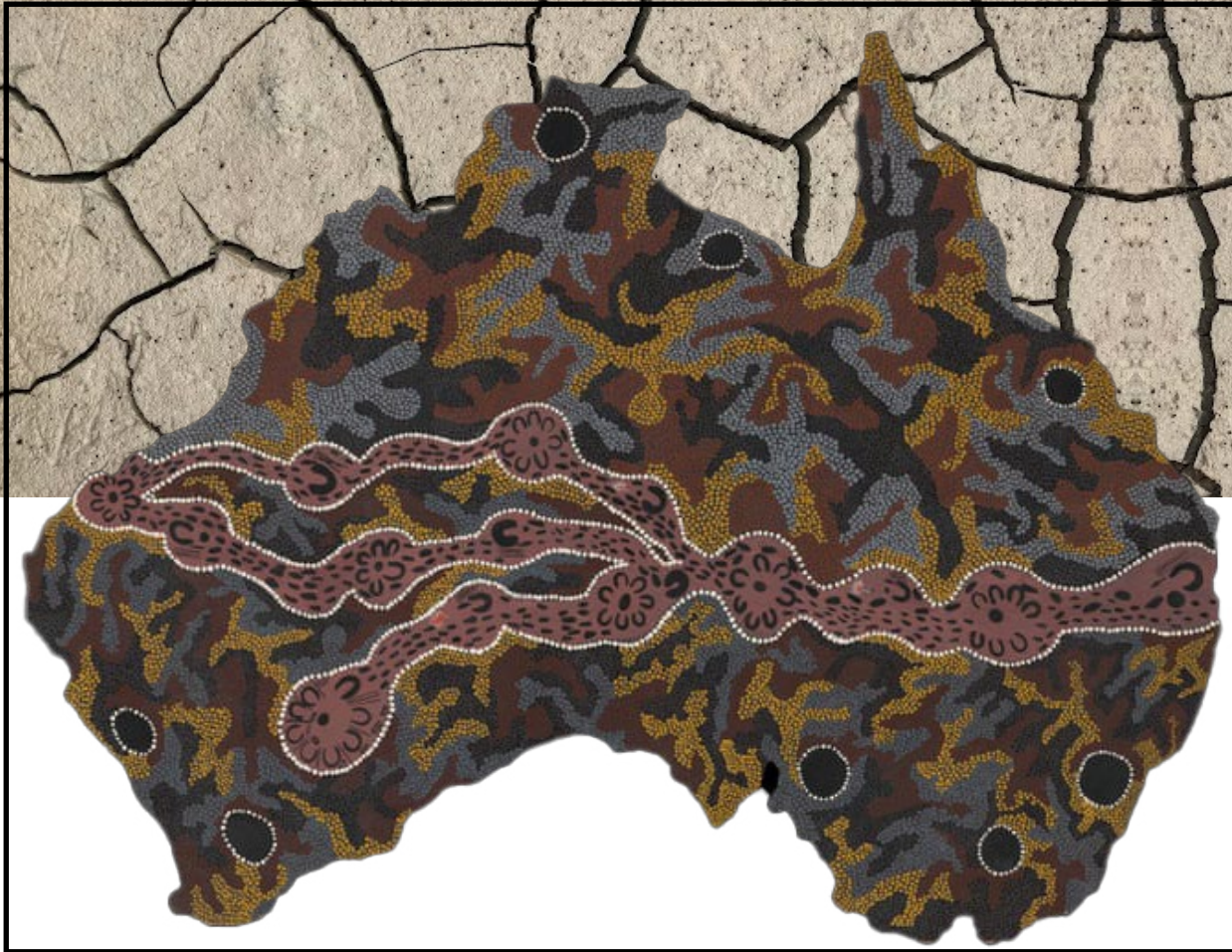




GUN HILL FOOTBALL



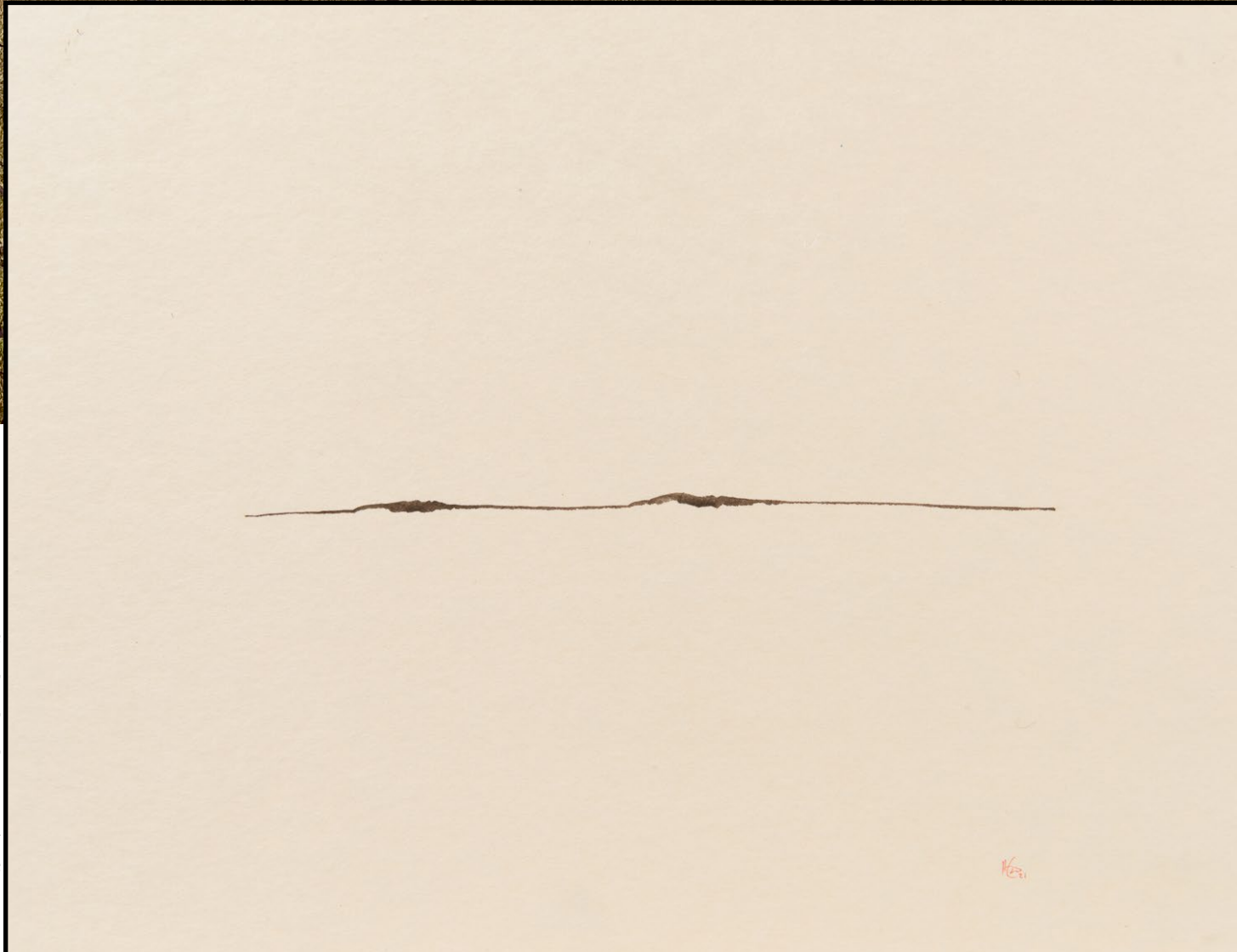
SAR DANCES + PATHWAYS



Aboriginal culture is the oldest in the world. Like many indigenous cultures, with its many varied beliefs, there is an immense appreciation of the land - which is thought of as sacred. Aboriginal story systems and Songlines imbue Country with meaning. Going beyond this, as nomadic people the land, and as such the world, was brought into being by their ancestors walking through the dream-time singing the world into existence. Through stories that we learn the truth about the world.

Harry Cory Wright.

Harrys line drawings evoke a sense of place and moment. Their simplicity actually draws on great detail of shape, making them so recognizable to local people who know those particular sand dunes.



In Aboriginal Songlines sometimes the pitch of the song will be the same as the shape of the land-scape, giving a shared understanding of a route to someone from a different tribe with a different language. While this demonstrates shared culture of land on a macro scale, Harry demonstrates shared culture of the land on a micro scale.



Materials Of The Marsh .

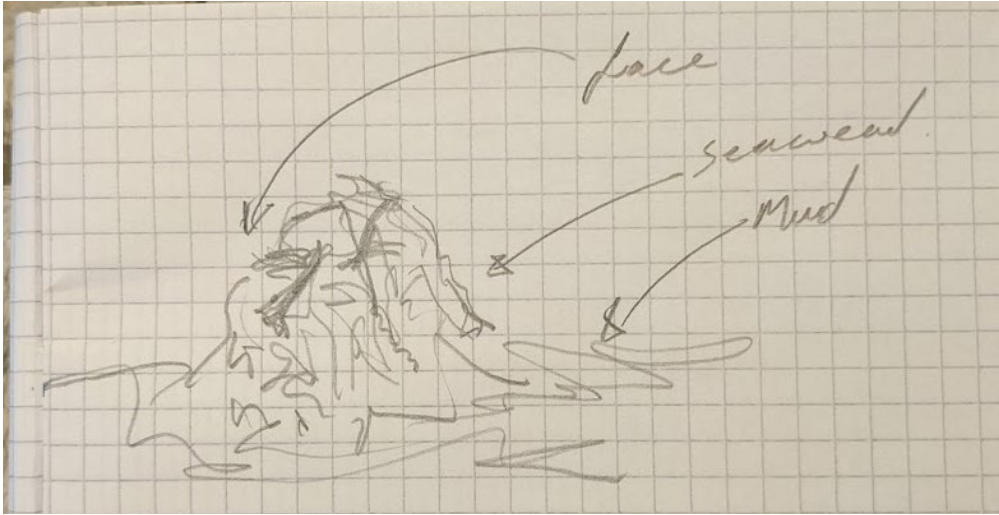
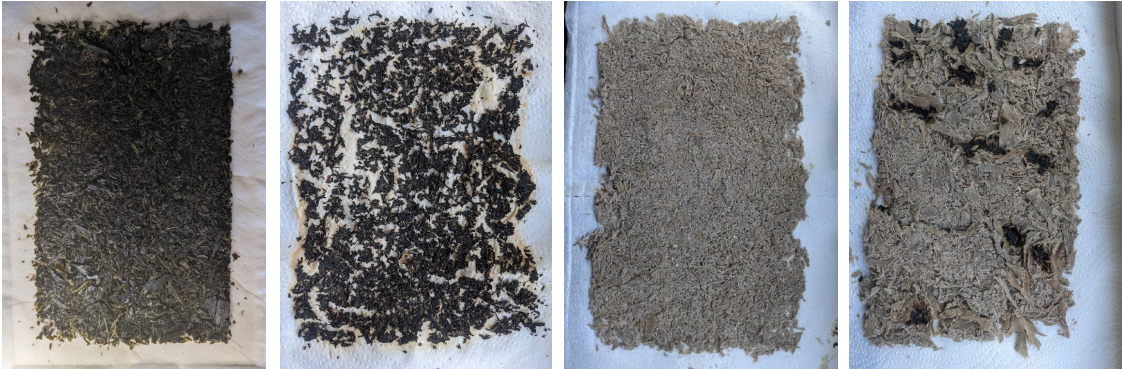
Marram Grass .



Marram Grass has been traditionally used by seaside communities for years until its ban. The grass roots hold the dunes together giving it a symbiotic relationship to land and people, until it was over harvested.



Seaweed .





MIUD .

“Mud is motion, and water is time.”



Death Mask .





In To The Marsh .

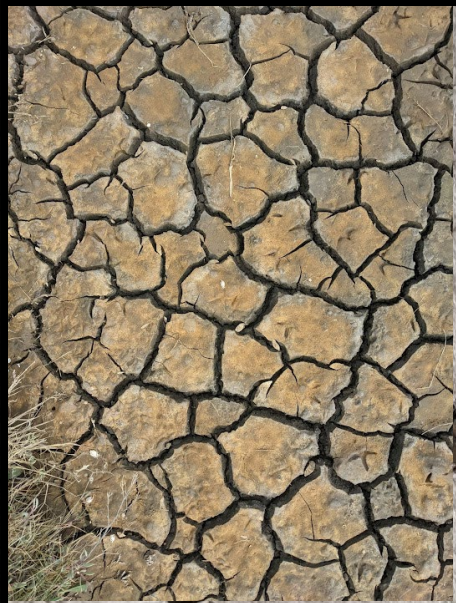




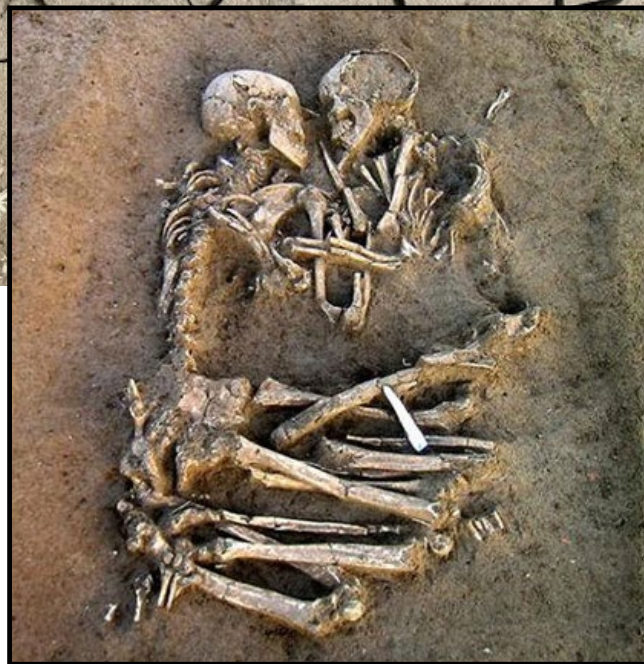
Putting my work back into the marsh, let I be a part of the cycle of the place. Anthropomorphizing the marsh, forming it into stories of the community and then putting it back into the lands gives the mud its own narrative and the story continues with the marsh taking over as protagonist.



Marsh Textures .



Lovers of Valdaro . Bog bodies .

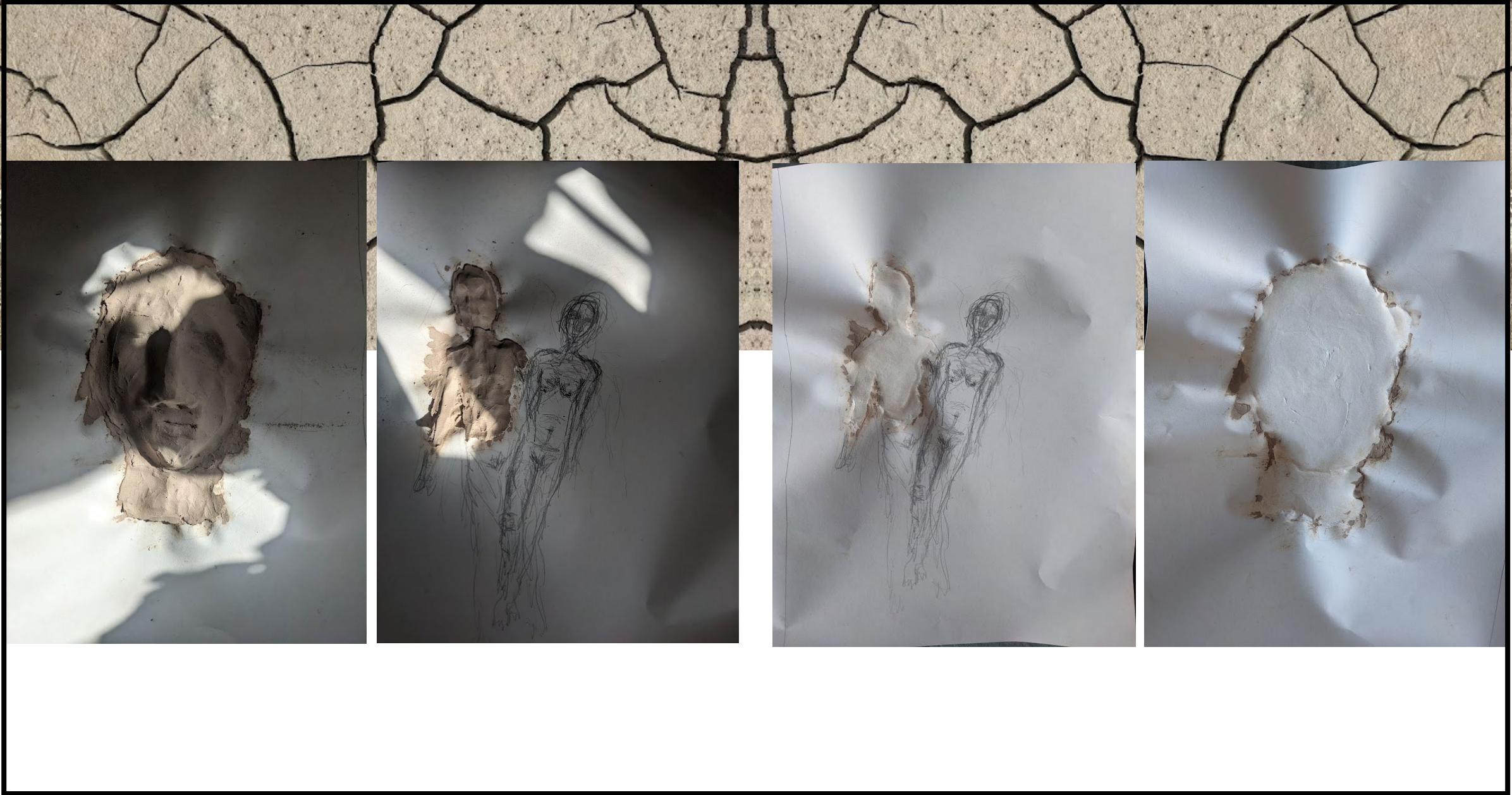


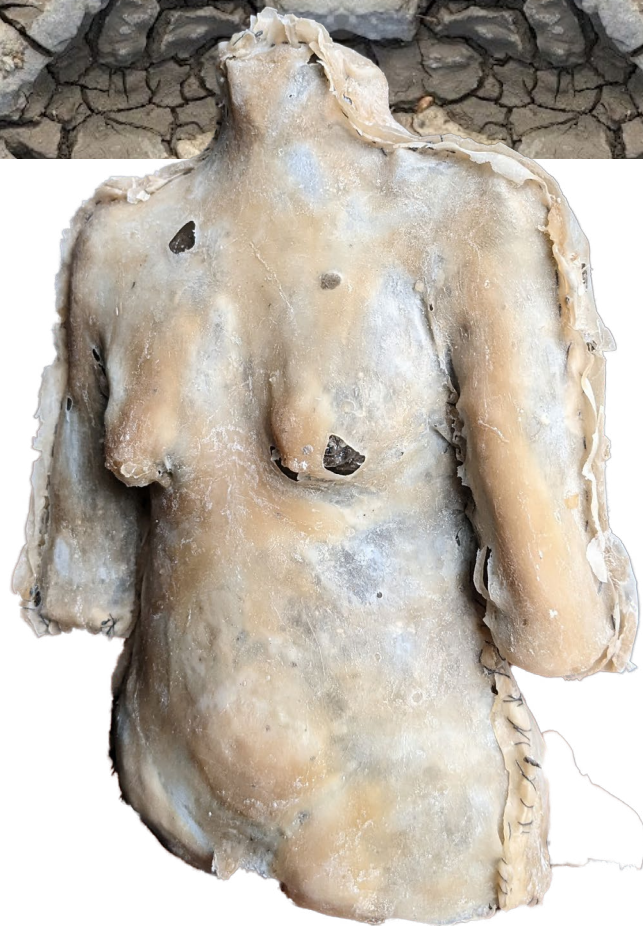
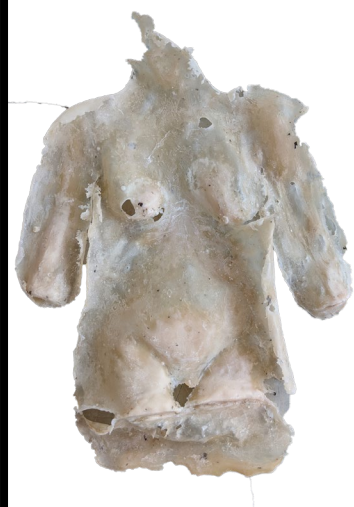
Bog bodies .



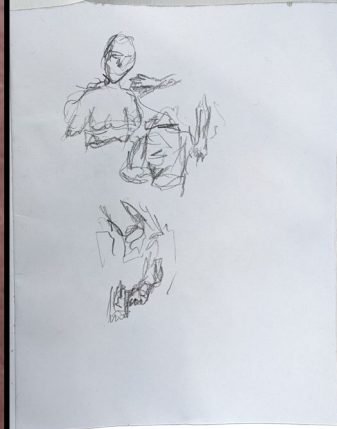
Pompeii .

















Bibliography .

- 1) “Frances Billing:Death Mask” Unknown Misandry, 22nd September, 2011, unknownmisandry.blogspot.com/2011/09/fanny-billing-mrs-frary-english-serial.html. 13th May 2022
- 2) “Catherine Frary:Death Mask” Unknown Misandry, 22nd September, 2011, www.unknownmisandry.blogspot.com/2011/09/fanny-billing-mrs-frary-english-serial.html. 13th May 2022.
- 3) “The South-East View of Norwich Castel” Norfolk Tales, Myths and More! norfolктаlesmyths.com/2019/08/18/notable-19th-century-norfolk-murders-part-2/. 15th May 2022.
- 4) “Fake English heritage site Plaque” Daily Mail, www.dailymail.co.uk/news/article-7392175/Poisoned-wealth-Neighbours-rail-against-rich-second-home-owners-destroying-Chelsea-sea.html. 13th May 2022.
- 5) “Broad Sheet of the Trial and Execution of Billings and Frarey” Unknown Misandry, unknownmisandry.blogspot.com/2011/09/fanny-billing-mrs-frary-english-serial.html. 20th may 2022
- 6) Mick, Josephine, “Seven Sisters Sonhline” 1994. Photograph: Reprographer: Serras, George. The Guardian, www.theguardian.com/artanddesign/2021/sep/27/we-will-teach-the-british-how-to-survive-indigenous-australian-culture-hits-the-uk. 20th may 2022
- 7) Chapman Nyaniilpayi, Nancy. “Minyipuru Pangkalpa” 2015, National Museum Australia, www.nma.gov.au/exhibitions/songlines-touring
- 8) Cory Wright, Harry, “Island Line 0128” Harry Cory Wright, harrycorywright.com/Ink-Catalogue



9) Scardua, Giacomo. “Lovers of Valdaro, Mantua museum”

May 2, 2014, Flickr, 1 <https://www.flickr.com/photos/124322741@N02/14068901506/in/photolist-awVr1a-awWSMm-axnyv7-axinNH-RWX-fS5-xmNUmU-R2AZC9-azciR6-dcZM5X-ax8hRU-6JXvPd-etr5Qi-ntK-KL7-ntiySJ-nrdNgm>. 9th May 2020

10) “Tollund Man” Smithsonian Magazine, 22nd July 2021, www.smithsonianmag.com/smart-news/tollund-man-europe-bog-body-meal-food-history-mummy-180978247/. 13th May 2022.

11) “People of Pompeii” Pompeii Tours, <https://www.pompeiiitours.it/blog/what-did-the-pompeii-people-look-like/>. 20th May 2022

12) “Archaeologist find” Sandie Geoarchaeology, sandiegoarchaeology.org/dig-deeper-what-tools-do-archaeologists-use/. 20th May 2022