



40 Hand crafted Objects
3 Communities
1 Maker

Hannah Bloomfield

Contents

Chapter One

The Gardener 'Soup' Mugs

Chapter Two

The 'Fire-circle' Stools

Chapter Three

The Woodland Community Chairs

Chapter Four

The 'Stranger' Bench

Chapter Five

The Family Garden Bench





Statement

Communities are built up
of Family we have,
Friends we make and
Strangers we meet.

I have sought out different
communities in the hopes
of reflecting them through
craft that is then given
back to the communities
that inspired them. The
foundations of my work
circle around eating to-
gether and sitting together
as a means of connection.

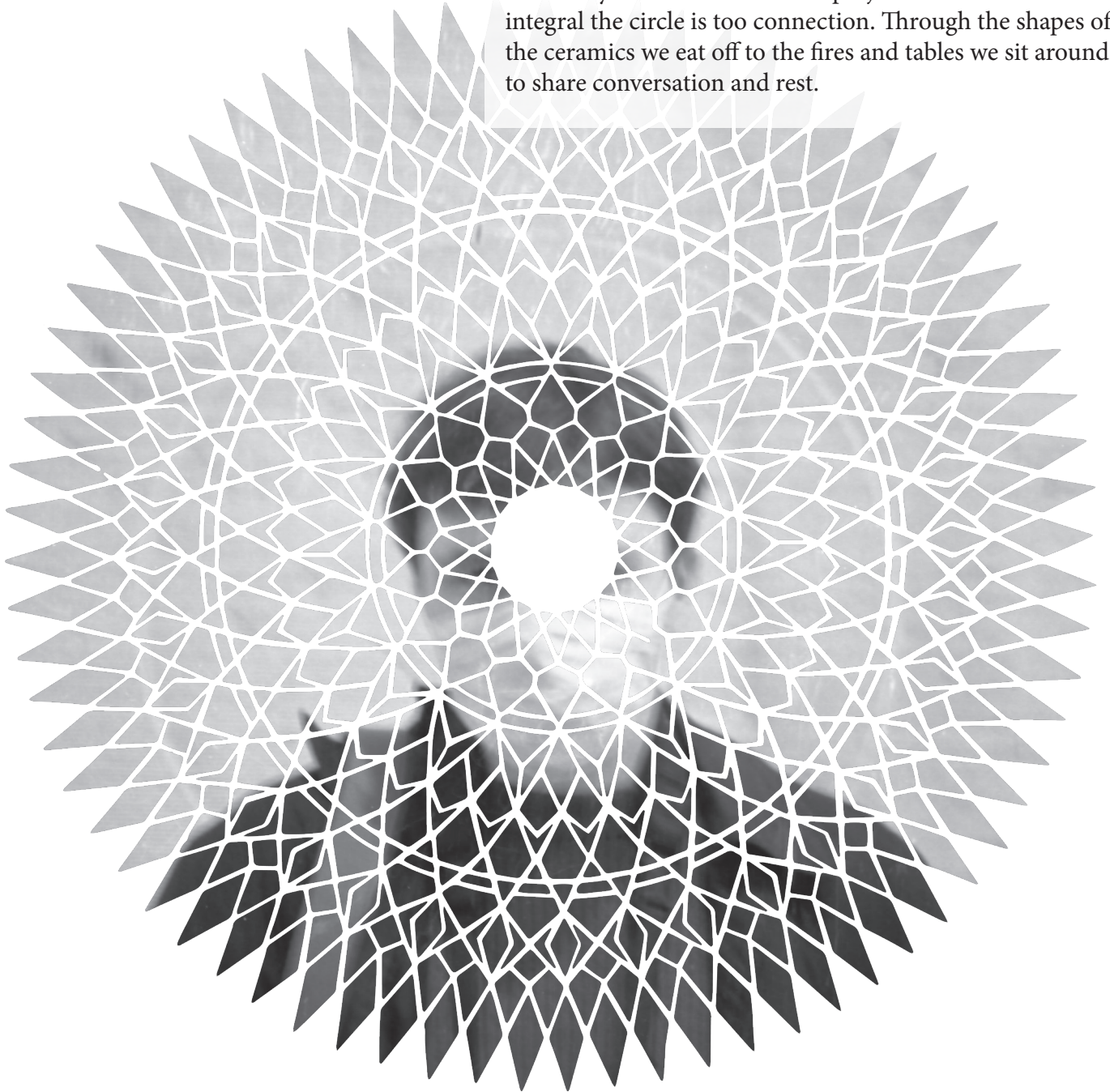
Let us Sit:

Sit with soup and me
And we can nourish our bodies.
Sit around the fire with me
And we can drink our tea.
Sit in rest with me
After our hard work is done.
Sit with me stranger
And let us eat and get to know one another.
Sit in sanctuary with me
And we shall find acceptance together.

- Original poem in summary of my work



Geometry is at the heart of this project because of how integral the circle is to connection. Through the shapes of the ceramics we eat off to the fires and tables we sit around to share conversation and rest.

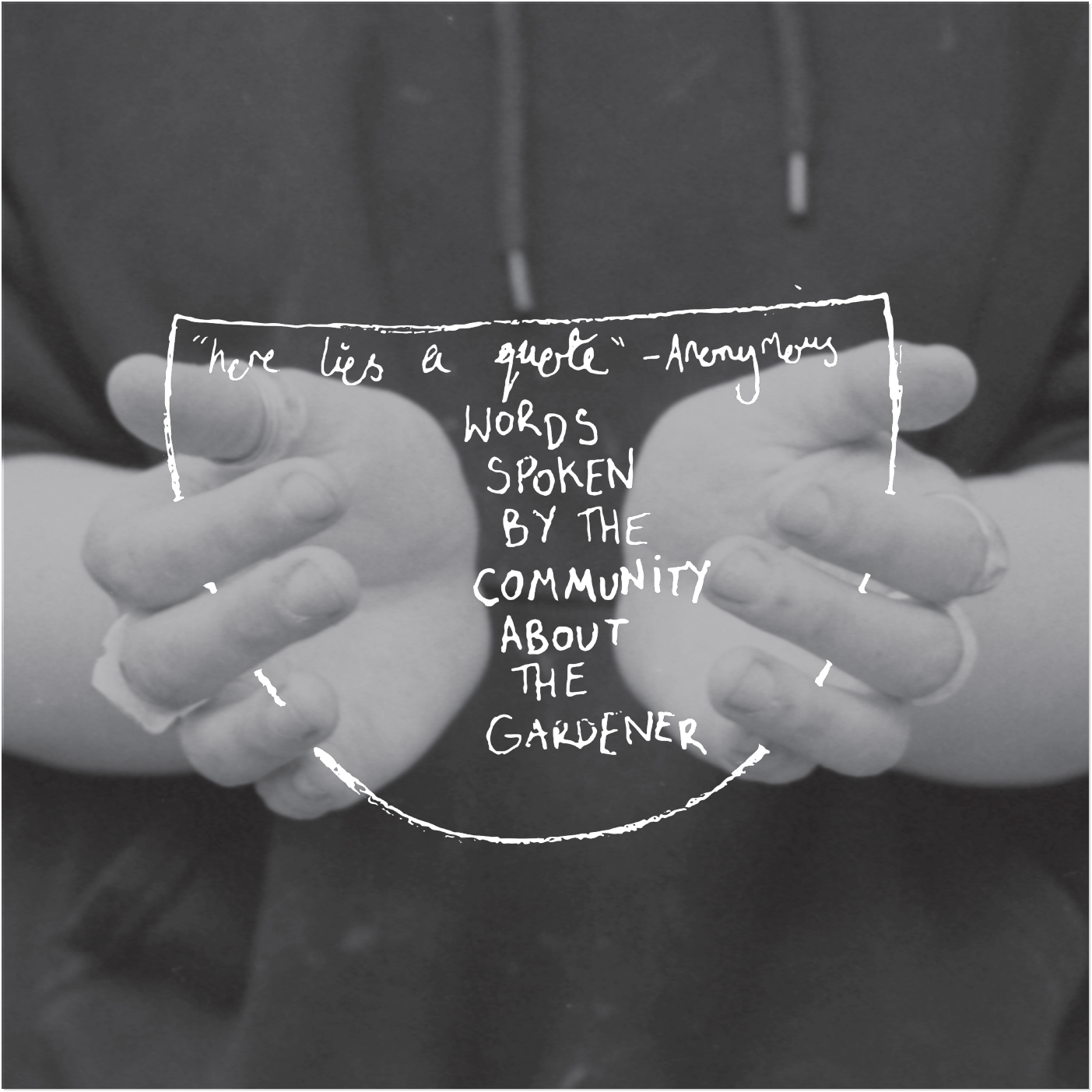


Chapter One - the Gardener 'Soup' mugs



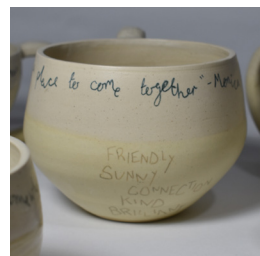
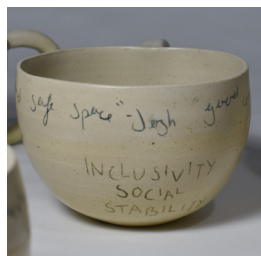
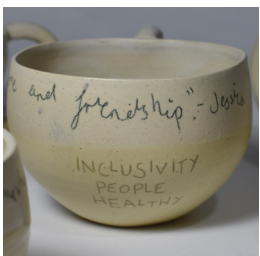
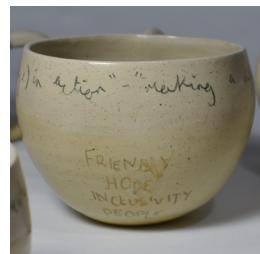
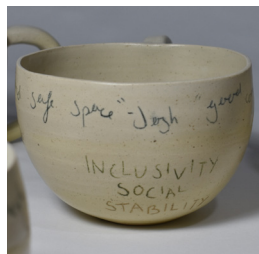
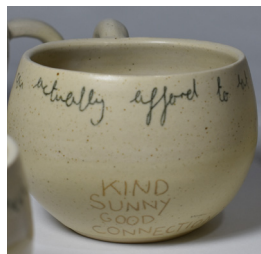
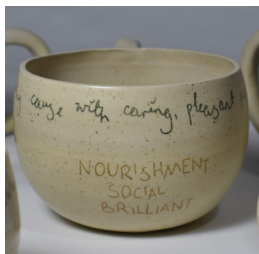
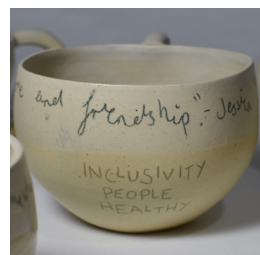
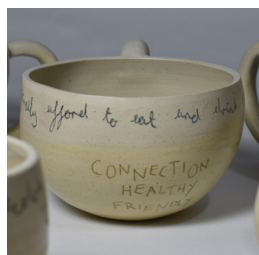
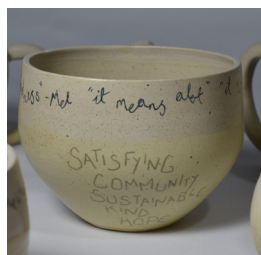
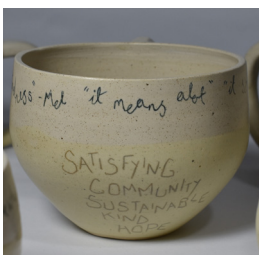
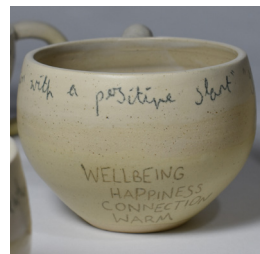
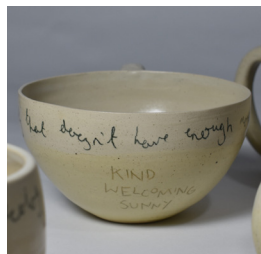
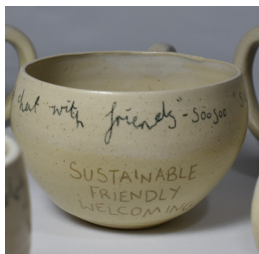
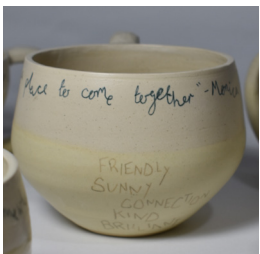
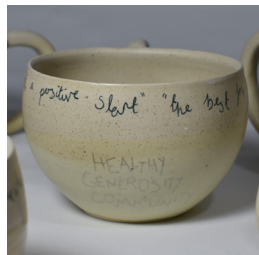
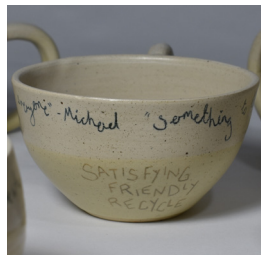
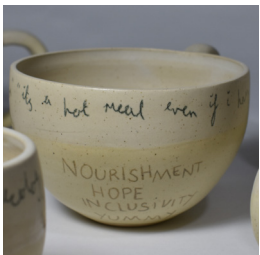
The Gardener Cafe is located in the North Laines of Brighton. It is run on a community care model that offers Pay-as-you-feel service. I approached them with the offer to make a donation of crafted objects that would reflect the incredible community they have built.

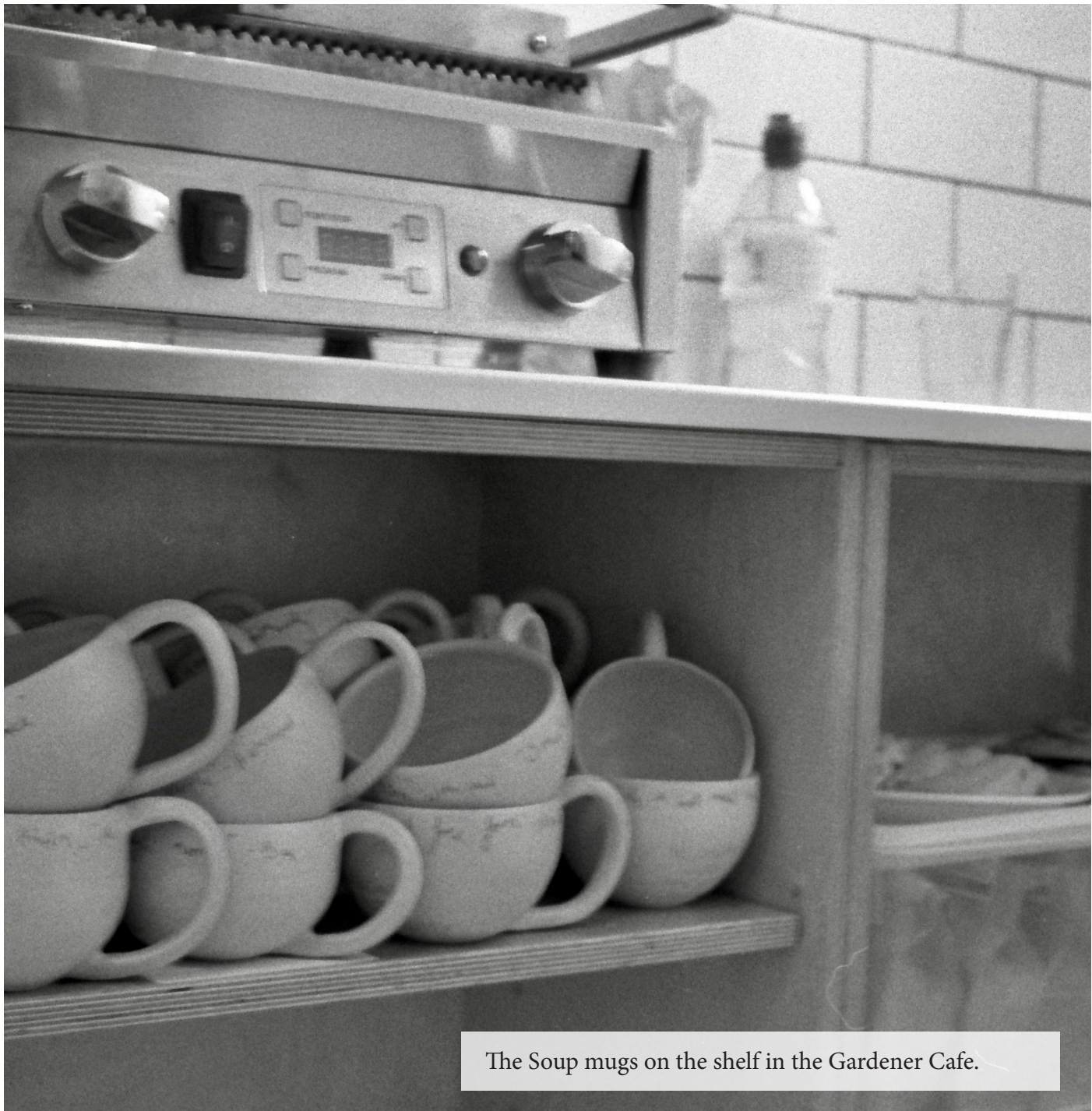




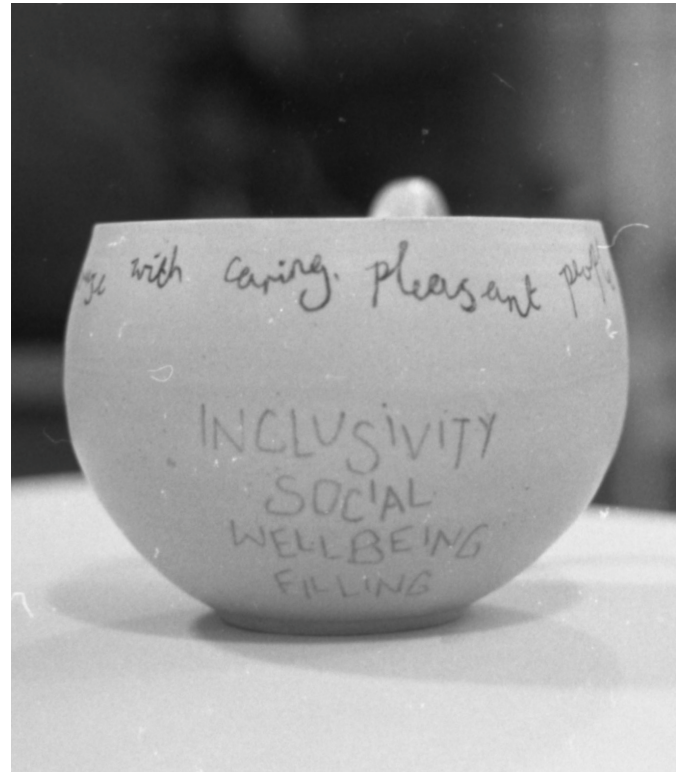
"here lies a quote" - Anonymous

WORDS
SPOKEN
BY THE
COMMUNITY
ABOUT
THE
GARDENER





The Soup mugs on the shelf in the Gardener Cafe.



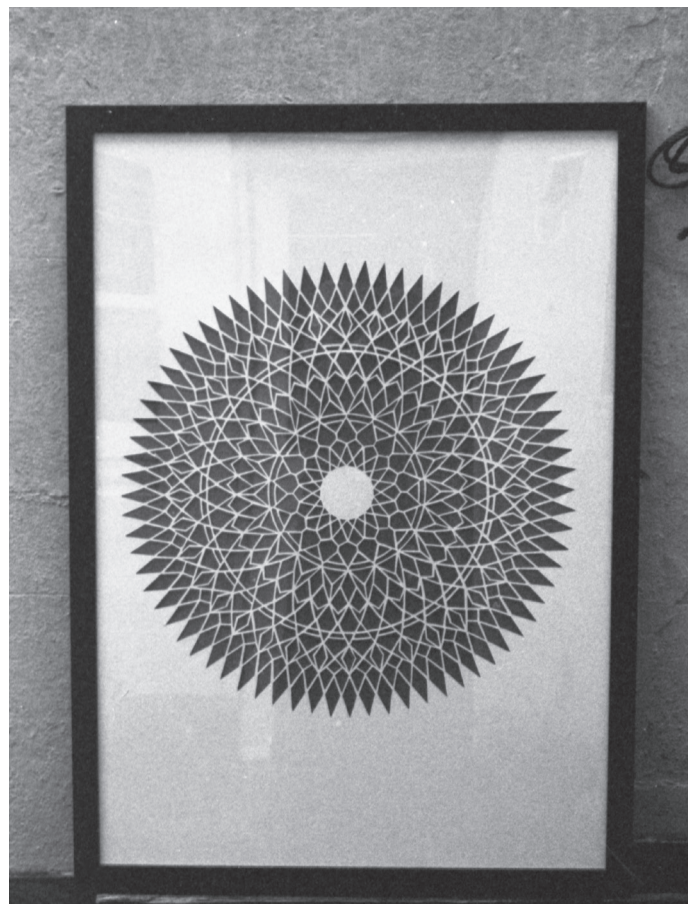
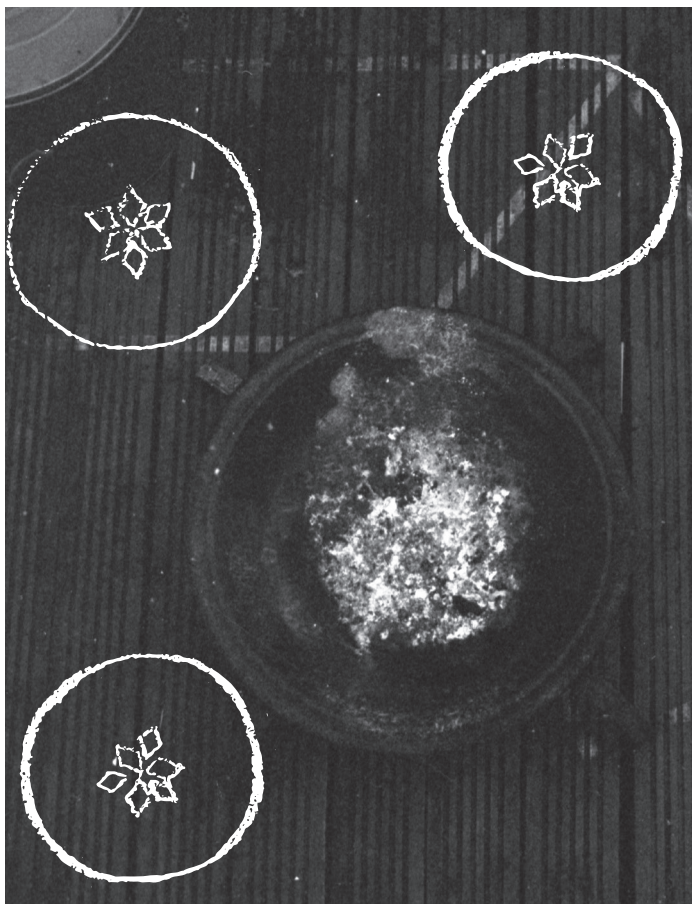
There are 30 mugs in total and each are unique in shape and have words taken from interviews with the Gardener community. They were donated in December 2021 and have been sitting on the shelf under the toastie machine ever since.



Chapter Two - The 'Fire-circle' Stools



It was the circular nature of the fire that formed this mini project from a woodland trip to Cuckfield woods. This trip would later inspire me to come back and spend time with the Monday management team for my next project.



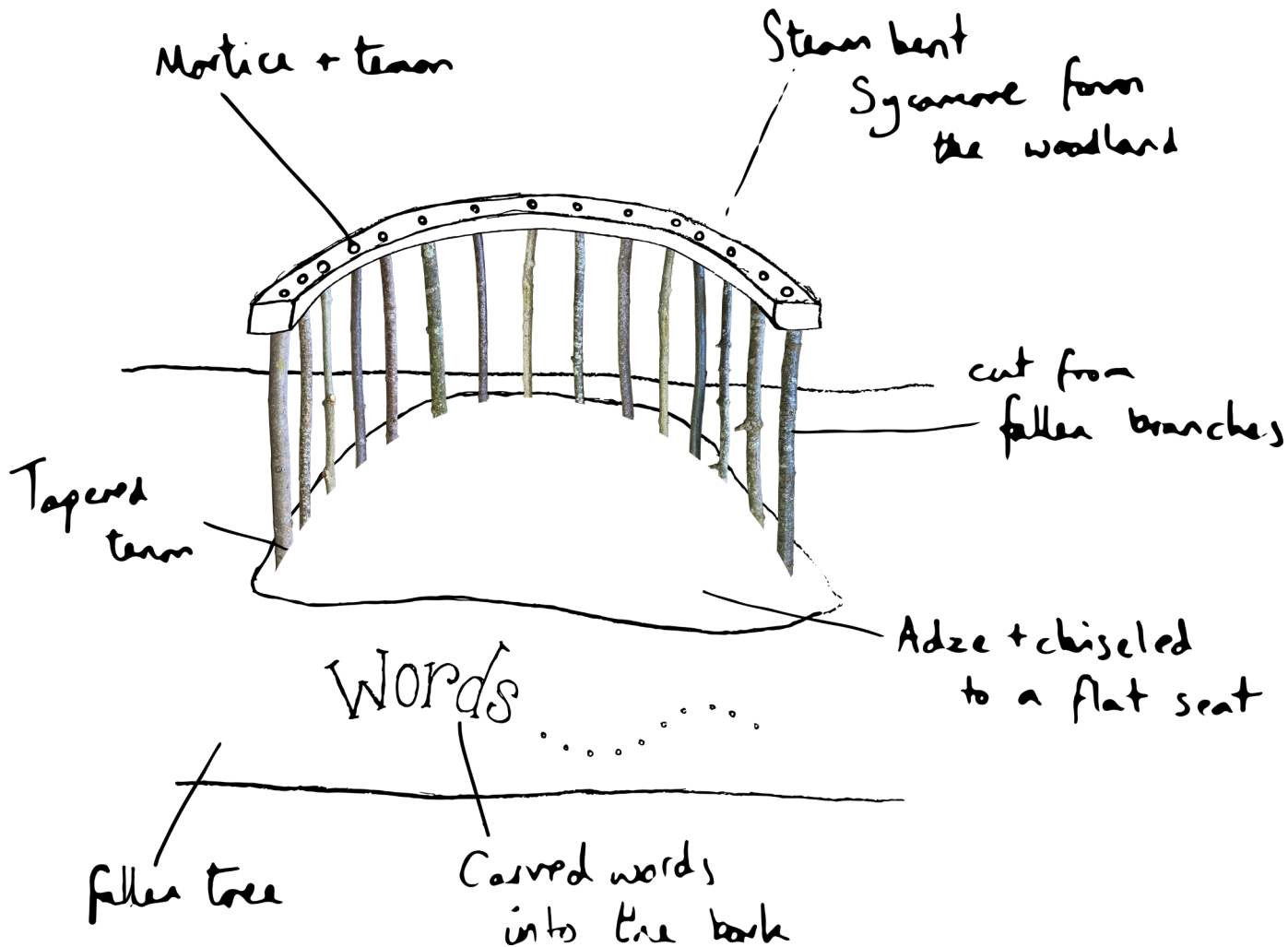




Chapter Three - The Woodland Community Chairs



On Monday mornings a team of local volunteers come together at Cuckfield woodlands and work to maintain the beautiful space that's owned by the village. This built community is forged on hard work and long tea breaks and helps to create friendships so I built them some hidden chairs to reflect the seamless work they accomplish.





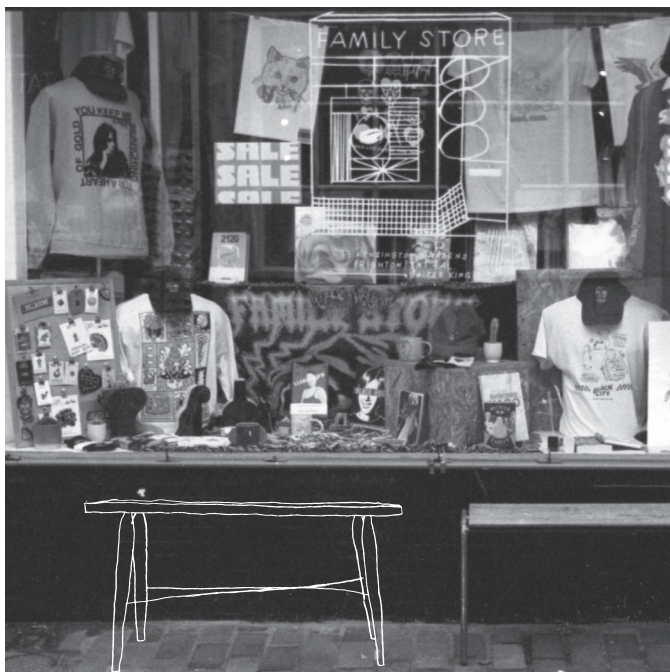
the double blackberry wood pecker trees, soon
drinks beauty days hopeful spring young level
sounded chippings sensitivity whorled like
included snails omitted decay frozen sensitivity
the companionship growth both wet soft
day community warmth buzzed comfort
higher friendships look nature meeting days
chryseus tremulae bittlen drake blackberry
companionship growth soil drake sensitivity



rebellious days bittlen drake nature growth
community wood pecker buzzed so
ripples meeting double bittlen drake beauty
at dusk day companionship double spring
with stone whorled whorled double blackberry
with tremulae bittlen drake wood pecker
companionship growth meeting day
with dusk comfort frog chryseus whorled

Chapter Four - The 'Stranger' Bench

Benches are everywhere in public: especially in graveyards where we feel connected to strangers through engraved plaques. What if we could have connection with strangers in person through the form of a bench?



Placing a bench in public seating areas for strangers to share a meal





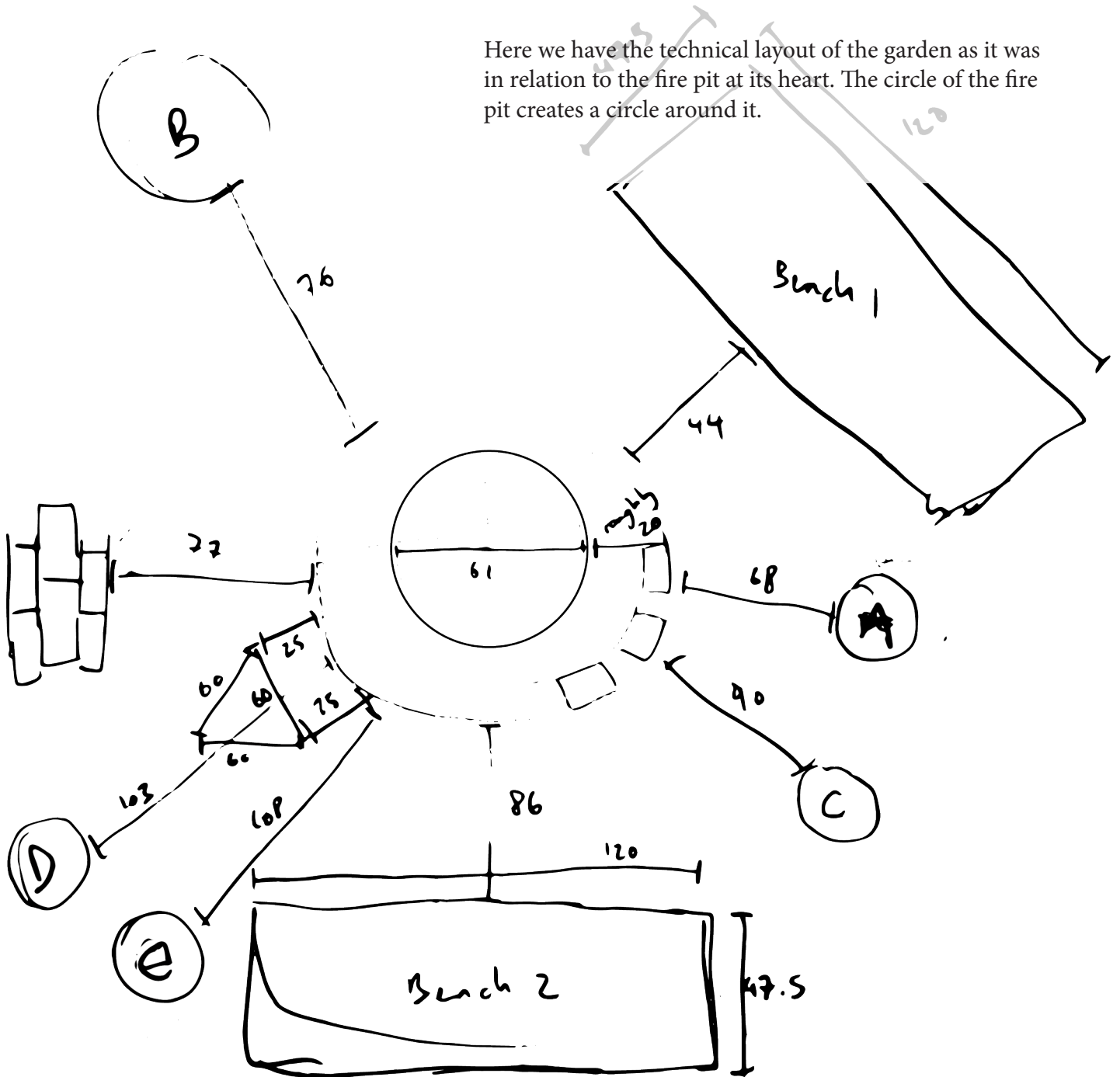


Chapter Five - The Family Garden Bench



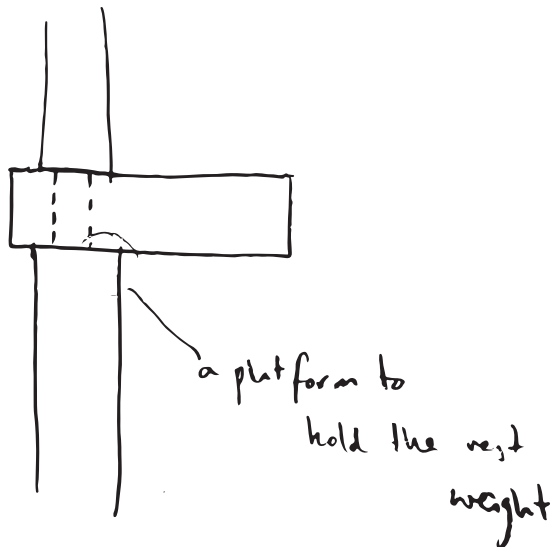
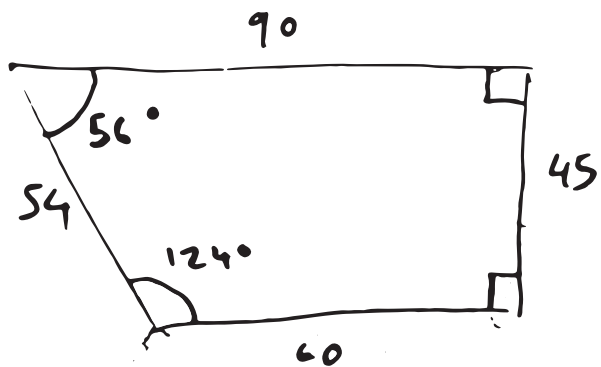
The last community I worked with was at my family home; inhabited by my mother and her partner Simon. In July 2021 my brother died and as a result our home became a 'sanctuary' and the garden a safe space and a retreat from the looming world. Family is the community you are born into but it grows in strength in times of grief and I wanted to celebrate that with a garden bench for resting.

Here we have the technical layout of the garden as it was in relation to the fire pit at its heart. The circle of the fire pit creates a circle around it.

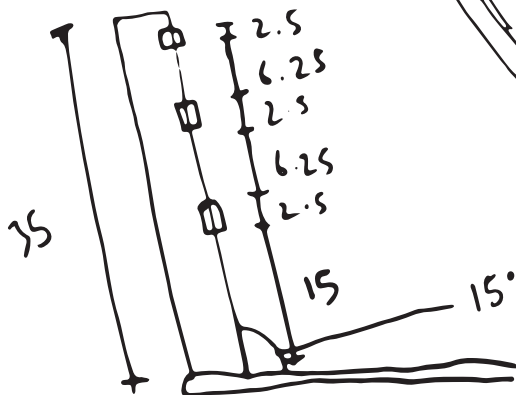
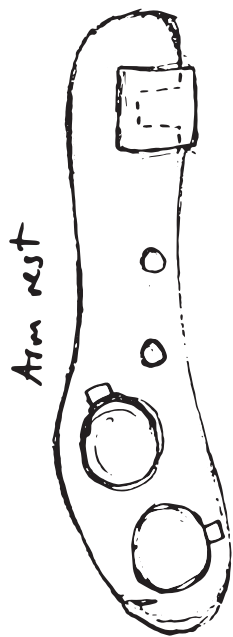
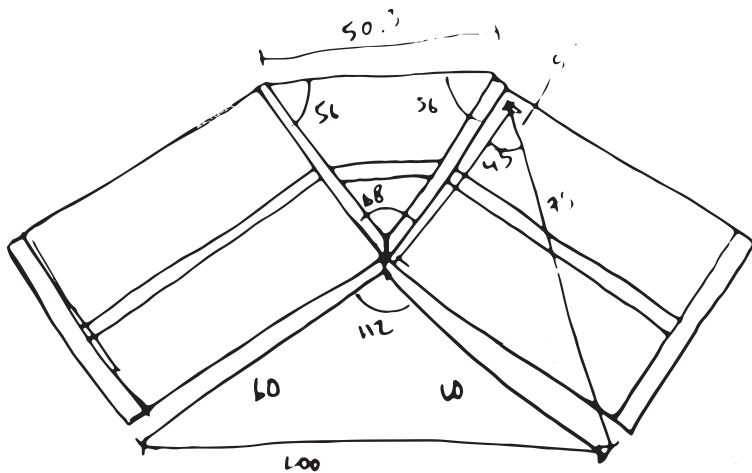




These drawings show how imperative geometry is, not only to human connection and aesthetic design, but to function.



CEDAR SEAT



15° from vertical
 $15 + 90 = 105$







Photos and Drawings by Hannah Bloomfield

Find me on Instagram [@hbloomfelddesigns](https://www.instagram.com/hbloomfelddesigns) or send an email to h.rose.johnston@googlemail.com