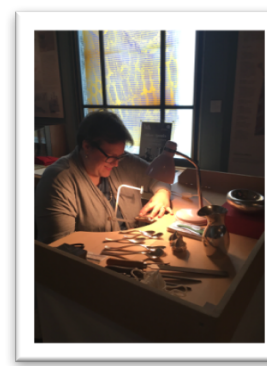


Methods- using industrial enamel on steel, sinking, raising and piercing the metal to find forms and shapes, using salt water to begin eroding away. Making paper and rust prints from found objects from site based on shapes of medical bowls.

Problems- enamel outcomes can be unpredictable. Steel is very hard to shape and form.



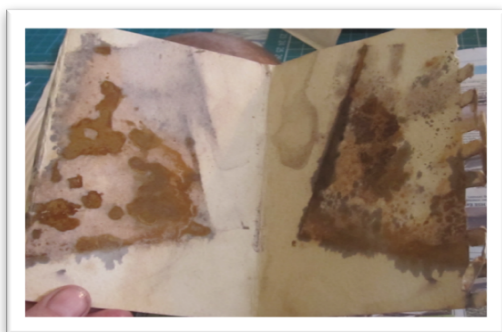
Nature of Investigation- I want to continue to comment on society and health by looking at Chailey Marine Hospital, raising awareness of some of the unsung heroes in history and their contribution using craft as a holistic approach to patient well being and recovery.

Why does it matter?- A personal journey which I would like to apply to help others in the realm of creativity.

In what way is it new?- This hospital hasn't been represented in an MA Craft project before.

Which makers are most relevant to your work? Elizabeth Turrell, Bettina Speckner, Helen Carnac and paper artist; Zarina.

Experiments- Continuing on with steel, enamel, decal paper and rust and also piecing out shapes.



Tackling problems- Find different ways to shape steel, like hydraulic press and english wheel, ask demonstrators. Contact established enamel artists and community groups.

Reflect- not only do I want to make objects that tell stories but also apply it to my practice as ways of engaging people in healing processes.

