

PDF 4 EXHIBITON SET UP

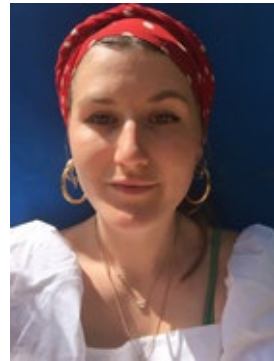
EMERALD PES

DEGREE SHOW SET UP

For the show I have on display my cart ideally with enough room that people would be able to walk around it. On the facing out area would be the tool bag side (here shown with white outlines of the tools. On the wooden part of the worktop would be a projection of a film of the cart on location.

The apron/ bench skin/ back wall is hung up to make it a more prominent piece as it shows the versatility in one object. The stool is in place to show viewers how the bench operates with the bike seat, a nod to the versatility and how the cart is being transported without having the actual bicycle there. Above the apron are cyanotypes hung on a bungee cord with pegs to portray the feeling of it being transportable, as if you have just pitched up and are hanging out your washing. The bungee is also used as the cord for the apron. On the next wall I wanted to make the cart feel more permanent with the shelf holding the hedgrow icons. They are reminders to take care of what is around us, this being the message that stays constant whilst the workshop continues exploring.





Emerald Pes

Reclaiming the Verge

BA Hons 3D Design and Craft

Verge meaning:

1. an edge or border.
2. an extreme limit beyond which something specified will happen.

The aim of this project is to create a cart that facilitates encounter, exchange and tactile forms of inquiry by calling into question certain elements of a given place where work is conceived. Crafting scenarios as a communicative tool in the process of making. Creating a narrative that pushes the one currently being told. Reclaiming the land as a place to roam in a more conscious manner making icons of the hedgerow from findings in situ. A nod to the tinker, roamer, and everyday stroller.

Dissertation Title: Can Art spur more Nuanced ways of Thinking about and Interacting with the Land?