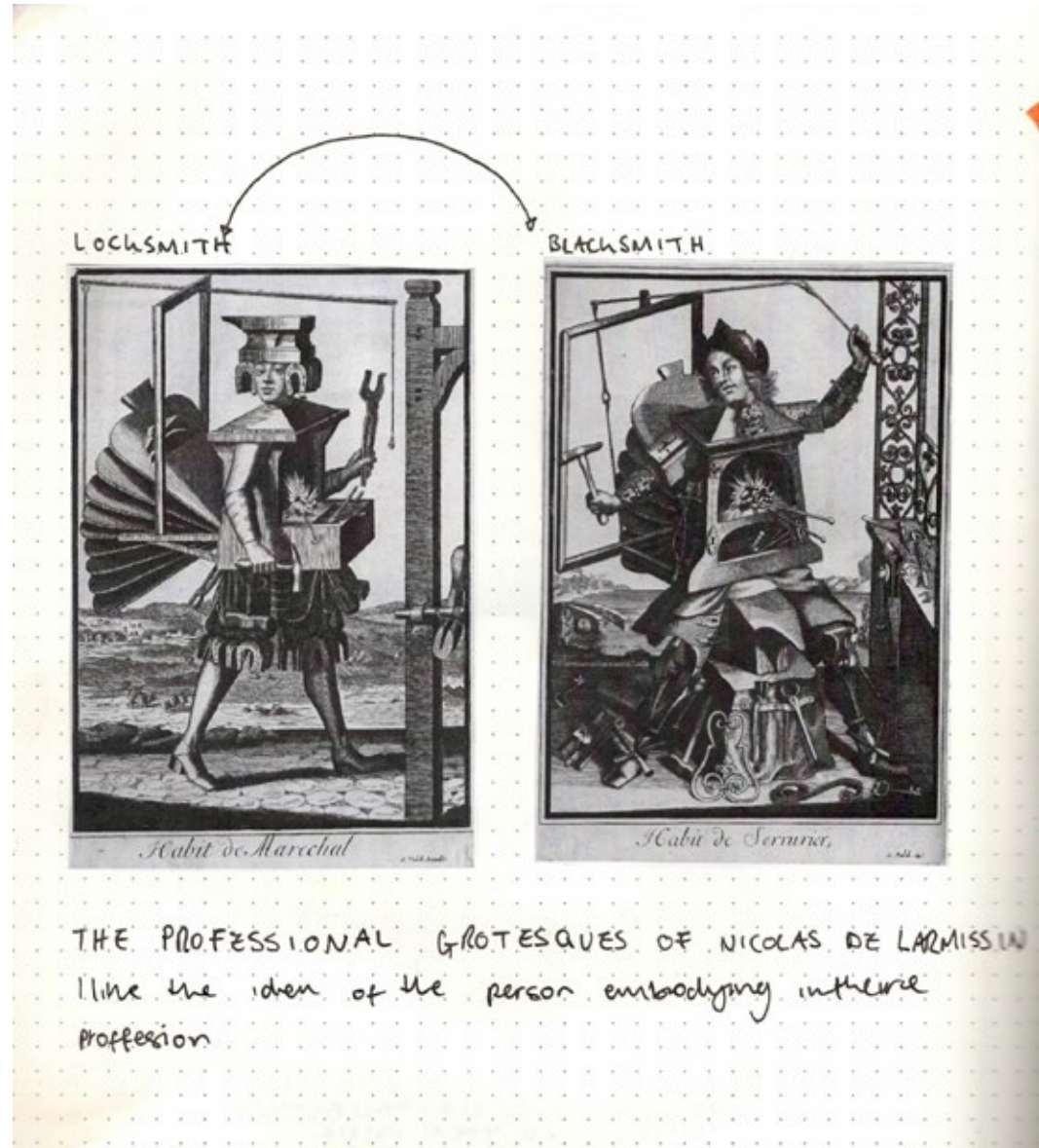
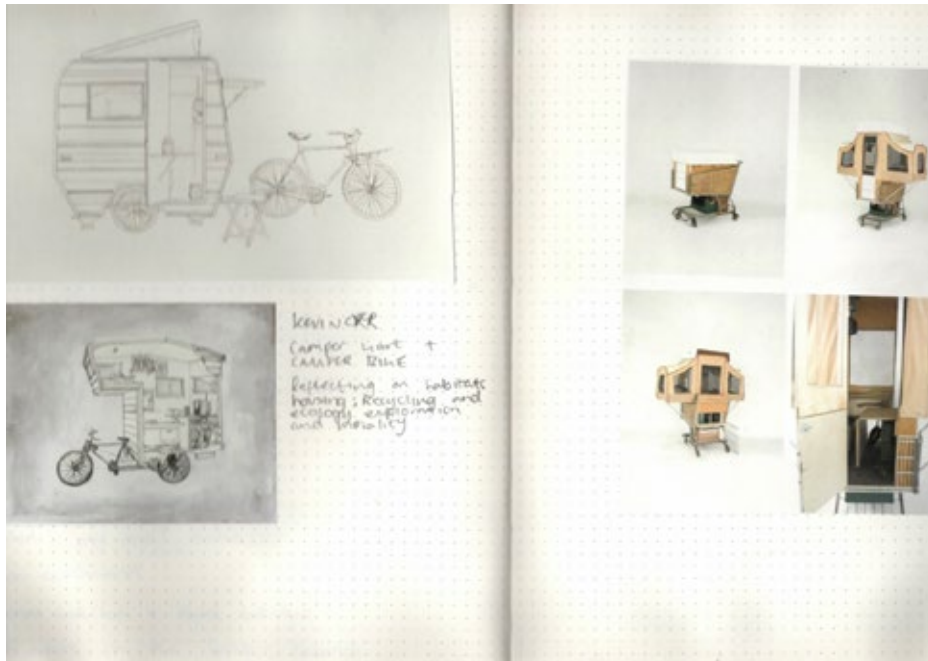




PDF 3 SKETCHBOOK

EMERALD PES



DAVID NASH EXHIBITION: TOWNER GALLERY



Heath's was an interesting imagery of something very homely made outside and destined to disappear

John O
ds. End
nds
ay, Country
he end

nd
> root
y it
group



Will Shannon, Suitcase Foundry

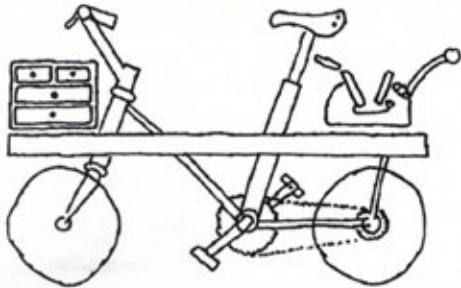
Very compact, tundry with the
attachments on the side
with all the necessary tools
not sure about the stool as
that doesn't fit into it. the
portability of the suitcases but then
again, I guess you can always find
a chair. From this Shannon ran
little fish casting workshops



FUTURE FARMERS
After sailing
around and
collecting ancient
grains they
canoed along
the river in
2010 and
made flat
bread for
people who
then resulted
in building a
home house



Cycling from John O'Groats to Land's End making postcards along the way, compiling a book at the end.



Letterpress collective



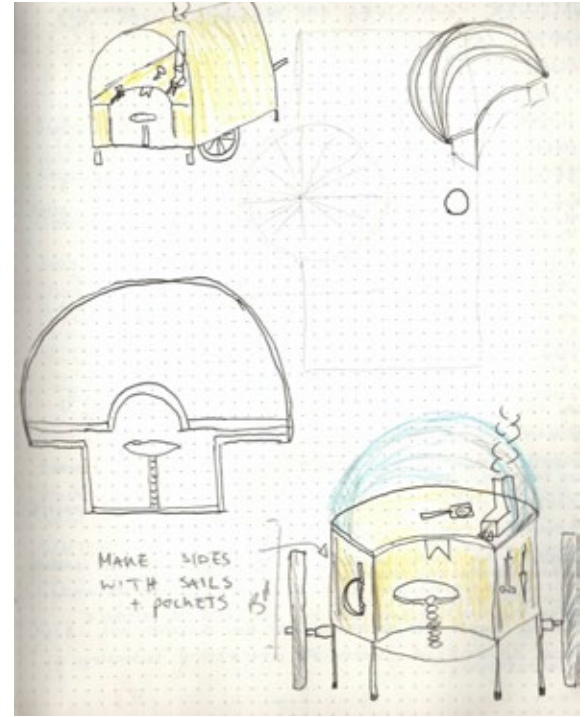
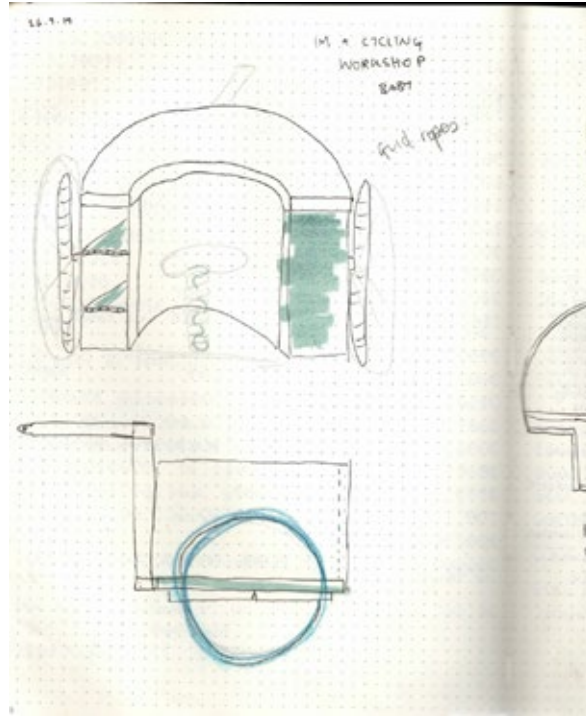
Cycling around and collecting Japanese root plant and making it into an edible syrup.

Tessa de Groot, Eating the Invasive



Will Shannon, Suitcase





NG THROUGH CURIOSITY

THEORY

LOGY

USE OF KNOTS ENCODING AND RECORDING
FORMATION USING CRYPTIC KNOTS KNOWN AS KHIPU

MELTING POINT 29.76°C
E WITH THIS THEN CAST TO SILVER?

EMISTS BELIEVED IN THE CONNECTION OF THINGS,
THEM APART AND PUTTING THEM BACK TOGETHER.

ERIC: UNDERSTOOD ONLY BY A SMALL AMOUNT OF PEOPLE

WITTGENSTEIN

KRUGER

BAUHAUS

CHI - JAPANESE COPPER ALLOY

GA

TION GUILDING: PRODUCING A LAYER OF NEARLY PURE
ALLOY BY REMOVING THE OTHER METALS FROM ITS

OLLED RANDOMNESS

TUCHOLSKY'S 'THE SOCIAL PSYCHOLOGY OF HOLES'

THINGS OUT OF RUBBISH THEN CAST

PERSONALITY TO OBJECTS

is jewellery used as a vessel for memory?

TOOLS THAT WORK WITH BIKE PEDDLING?

RUSKIN

RUSKIN'S A CULTURAL PSYCHOLOGY OF CREATIVITY IN
ART

DEWEY - Philosopher for folk art 'Meaning has its

RESEARCH FRAMEWORK

ARCHEOLOGY OF NOW

SMALLER FLEXIBLE WORKSHOP

PILGRIMS
TINKERS

USING THE WORKSHOP TO MAKE A WORKSHOP

TRAVELLING AND MEMORY

EXPLORING THROUGH CRAFT

LEARNING WHAT I CAN ACHIEVE IN THE SICUMS

COLLECTIVE MEMORY

SLOWING DOWN + VALUE

SELF SUFFICANCY

CRITICAL MASS - CYCLING AS PROTEST

'BEINGS NEED TO RETHINK TIME, SPACE AND
BODIES

PRIVATIZATION OF LAND

DISEMBODYMENT OF EVERYDAY LIFE

JEWELRY AS A SHADOW

CARTESIAN DUALISM

DOES NOT CHOP UP TIME AND SPACE, SEWS

HENRY DAVID THOREAU - WALKING

REBECCA SOLWIT: WANDERLUST

'THE FARAWAY NEARBY'

MIND AS LANDSCAPE

CONNECTION BETWEEN PLACE PROCESS AND
IN JEWELLERY

BEGINNING STAGES GETTING THE HEIGHT AND SIZE



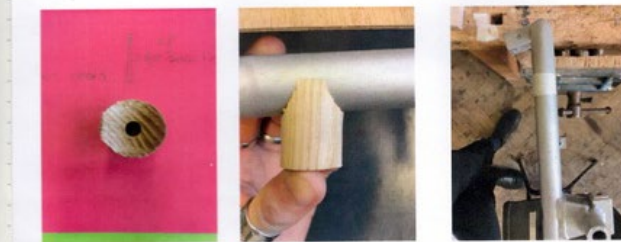
working out where the folds happen, creating space to sit at the front



SIZE



space



25mm drilled Dowel to create fittings



measured and drilled into the frame hard not to get the wood to split



Has created a tidy jam now need to work out how to stabilise

was the work.

John G
ds. End
rds
ay, Campbell
the end



Will Shannon, Suitcase Foundry

Very compact foundry with the attachments on the side with all the necessary tools. Not sure about the stool as that doesn't fit into it. The portability of the suitcases that then again, I guess you can always find a chair. From this Shannon ran little fish casting workshops.

nd
root
ing 16
sign



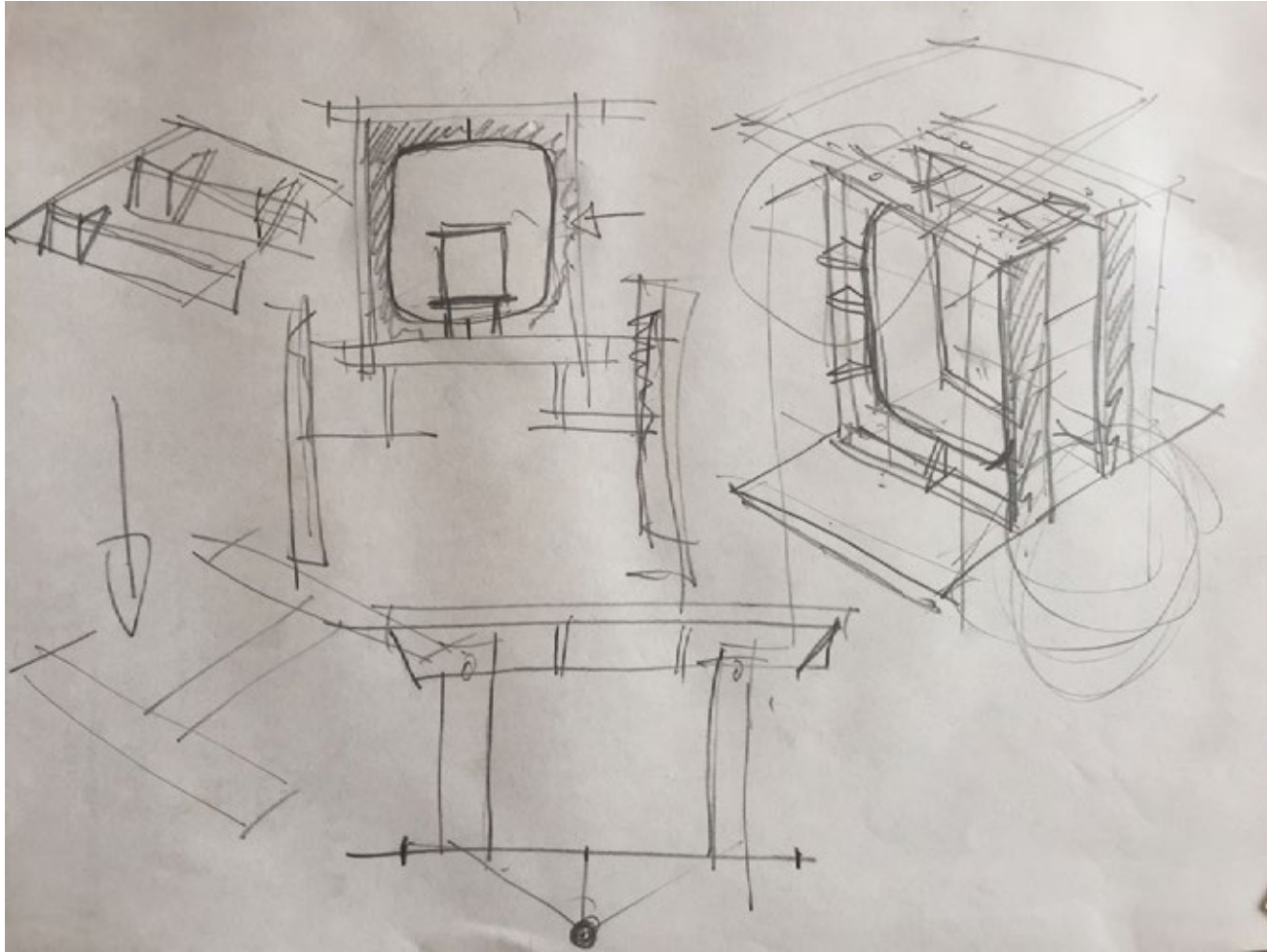
FUTURE FARMERS
After sailing around and collecting ancient grains they canoed along the river in 2010 and made flat bread for people this time resulted in building a bike house

Bike TRAILER DEVELOPMENT:

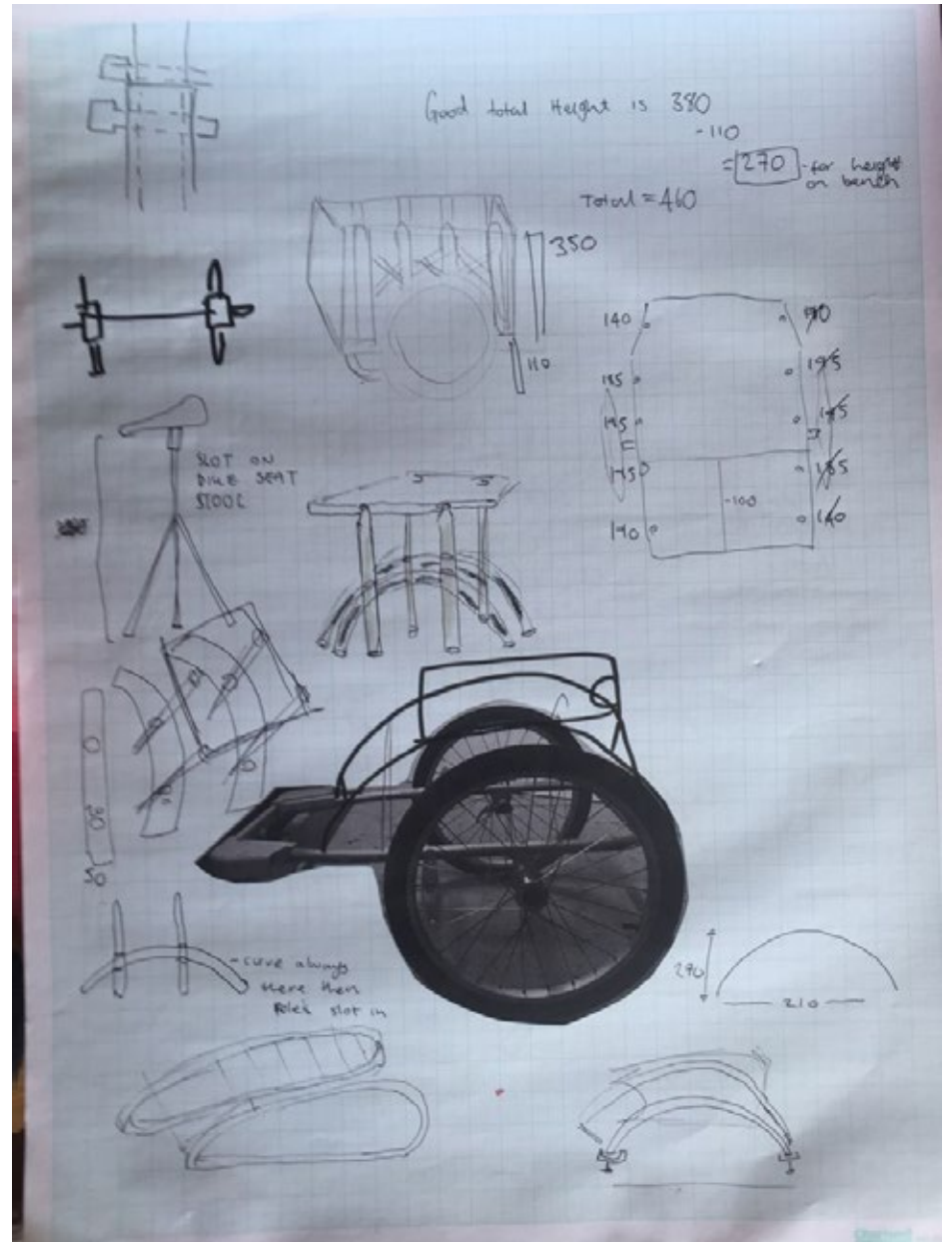
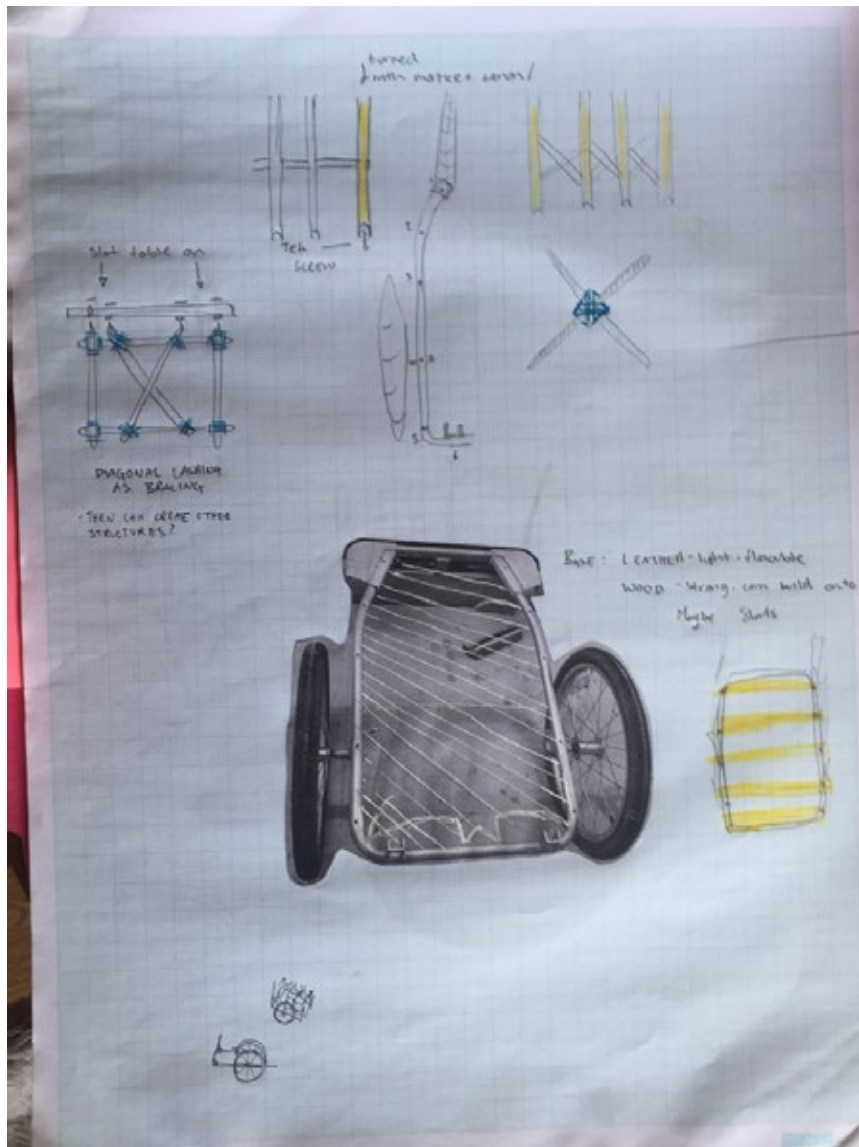
MAKING IT FOLDABLE, SO NOT CYCLING WITH
LOTS OF RESISTANCE. MAKING IT AS LIGHT AS
POSSIBLE, USING THE LANGUAGE OF TRAVEL/CYCLING.
WITH BUNGEE CORDS. MAKING A SEAT WITH
THE BIKE SEAT.

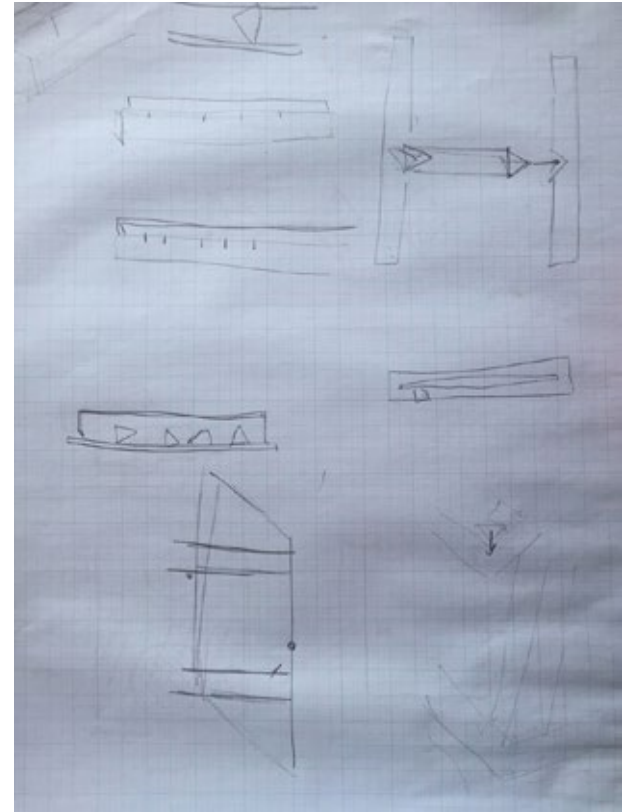
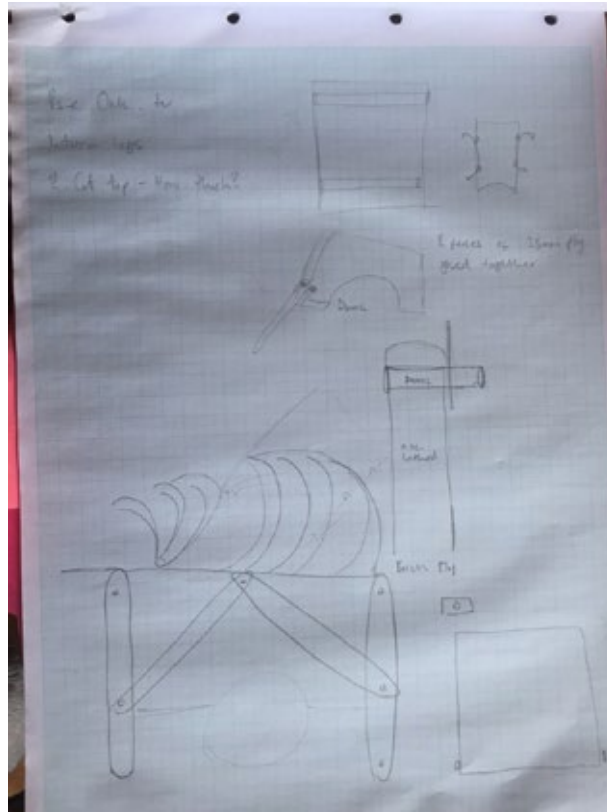


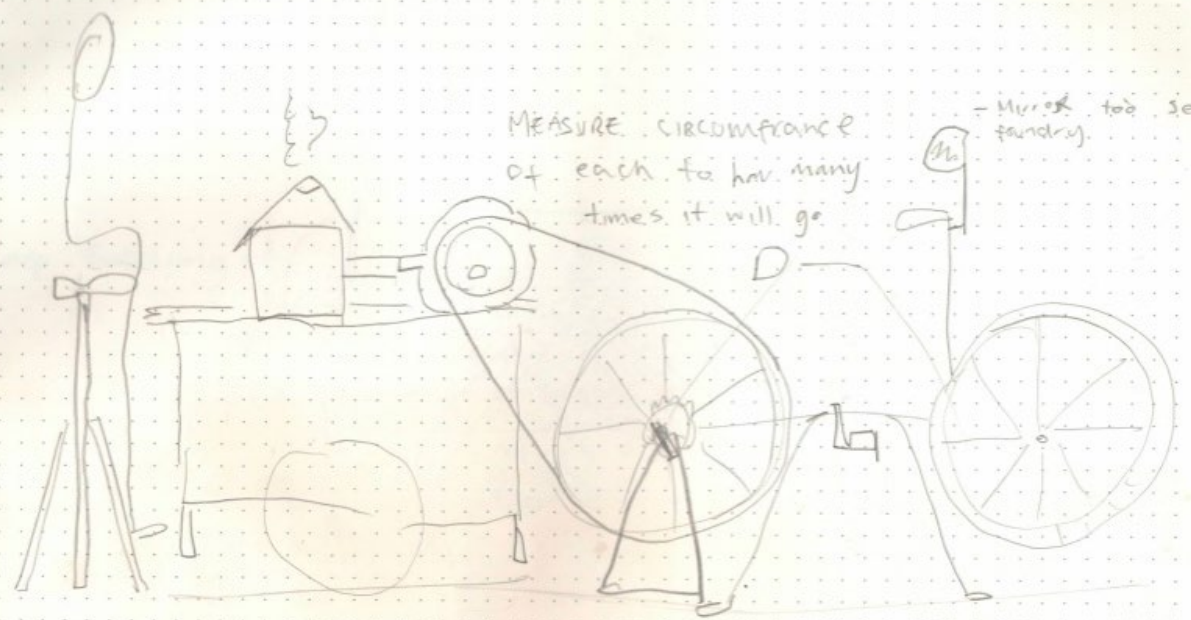
THINKING A TOOL BOX ON THE FRONT AND PLACE TO
SIT. STOOL.



Thinking about biscuit joints to make a lighter more robust worktop







MEASURE CIRCUMFRANCE
of each to hav many
times it will go.

- Mirror too see
laundry.



Ribe trailer to explore mobility in contemporary society
fragility of society,

Feelings about self preservation

Imagination of the future.. making do with less

Looking at weeds - Growth, independence + survival

Jewellery in the weeds - what does it mean to adorn

When your living in the weeds

ebay explorerer, ebay archeologist

ironic trying to be nomadic, but actually just googaling

ARCHAEOLOGY OF PAST, PRESENT + FUTURE

Digging and delving into memories of a place, archaeological research

Constant renewal is not good for future

How to conduct research and how we understand our memories

Memory is rather a driving force that creates something for the future

is there room for adornment? Should they be tools?

How the tradition of myths and tales could help

create solutions to the times of anxiety and uncertainty about the future of the planet we are living

Transient

-> Reimagining nature as culture: Expanding the boundaries of making and thinking of art in the Anthropocene

SENSES

THE FEELING OF HAVING THE WEIGHT OF JEWELLERY ON

LOSING CONSTRAINTS WHEN WEARING MASHES

RITUALS

WHAT IS THE ~~NEED~~ FOR AMPHIMORPHISM
FACINATION

-> PETER BAUHUS - FLAVA

-> MASHES?

-> FOLK TALES

PIECES

Folk ART AND CREATIVITY OF EVERYDAY ART LIFE

CAN FOLK ART HELP OUR UNDERSTANDING OF OUR SURROUNDINGS

Refinding the english landscape through craft

ARCHAEOLOGY

LANDSCAPE NARRATIVES, JAMIE PURINTON

USING STORIES IN CRAFT

SEED COLLECTING WAGON / TREE PLANTING
 DECOLLAGE - become. motion



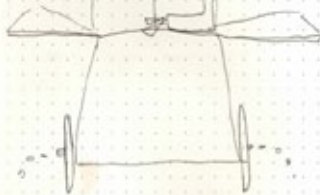
Signet rings of seeds

RELATIONSHIP WITH RANTS
 USED FOR FOOD, CLOTHING
 CURRENCY, RITUAL, MEDICINE,
 DYE, CONSTRUCTION

STUDY VISIT A TOOL FOR
 INVESTIGATION TO REFINO
 TRADITIONAL KNOWLEDGE

GO TO MILLENNIUM SEED
 BANK
 UK NATIONAL TREE SEED PROJECT

We were demotivated by the
 grain-removers in papers



SEED SIFTERS



OUR LIVES ARE ORNAMENTED LIVES" - LOOS
 ACTIVITY

ACTIVITY PSYCHOLOGY

or

CITATION: employing culture to generate culture

1) - Romantic and cultural modes of creativity
 stated in human made craft as an imprint
 here of Homo sapiens and a response
 in of speed. (15. Craft in dialogue)

daily experience involves something that is
 in craft as elements of motion and
 and sensorimotor qualities that have to be
 before one can explore different metals

"Seeing + using: Art + Craftmanship"
 a art, functionally to manufacture +
 craft.

ven into sensation" 16 Phenomenology - study
 ness and the objects of direct experience

+ JOHN RUSKIN - new political utopia

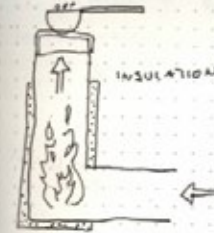
5 "PERCEPTION IS A GENERALIZED SENSE OF TOUCH

REAU-PONTY - I see, I sense, I move, therefore
 I am
 descartes

issue is of tactility - touching and feeling
 to distinguish
 calls by experiments with materials and
 faces.

re it will be the textures of outside
 re the sensation of the outside

ill and, socialist interpreting technological
 by



USE STEEL TUBE
 REBAR TO MAKE STAND
 AND INSULATION.

Donkey 32 - website

MAKING A PROPOSAL FOR SILVER, MAQUETTES

QUOTE FOR CASTING: Serres Genesis 1982

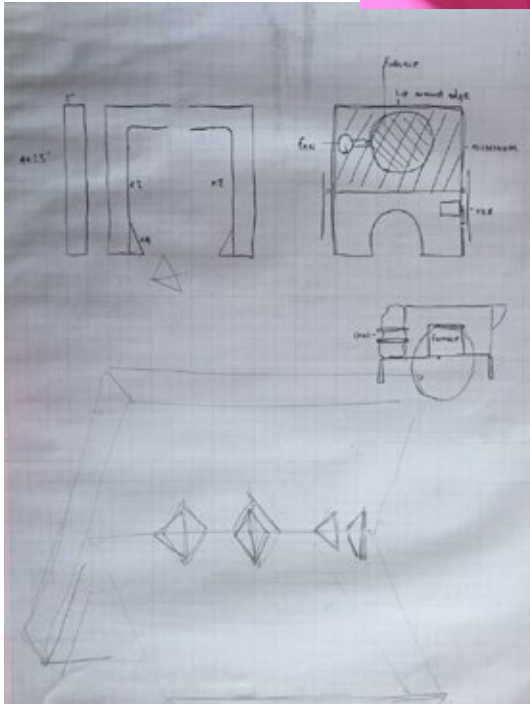
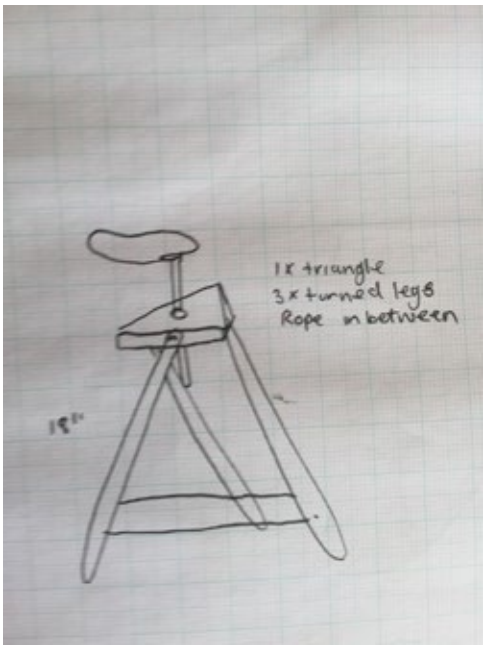
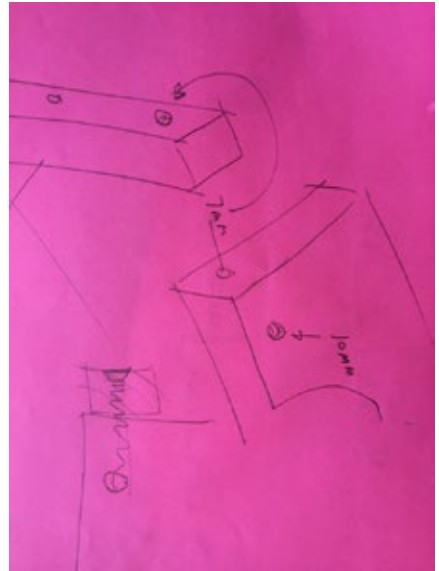
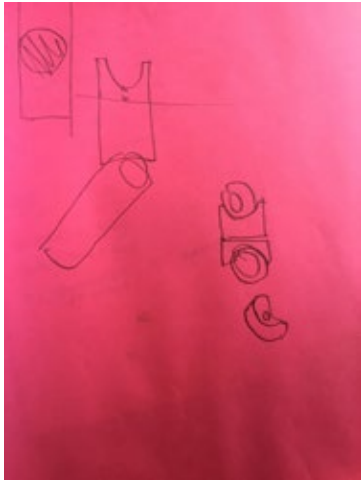
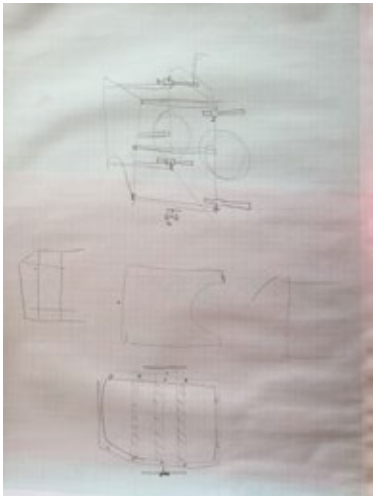
"the slow mixture, stately in its indolence, of liquids
 swirling round... in a unitary, through remarkable
 fashion, whence contingency, circumstance and the
 individual... turbulence is intermittent, in its very
 definition and its presence, in its nature and
 disruption. Multiplicity, before reaching unity, or within
 unity has gaps, it has margins, it is related with
 expectations, it is in tatters"

Authenticity comes from Greek autos (self) +
 Kentos (prepared) - implying something one could
 make with ones own hands - ascribing a reliable
 seal of quality 21

WALTER BENJAMIN - "The here and now of the origin
 underlies the concept of its authenticity... the unique
 value of the 'authentic' work of art always has its
 basis in ritual" 21

GLEN ADAMSON - PERCEPTIONS OF CRAFT

TRAILER















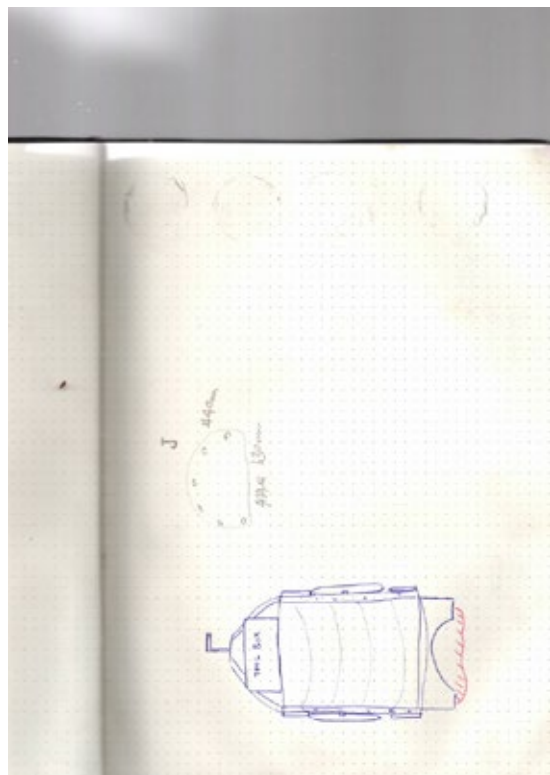
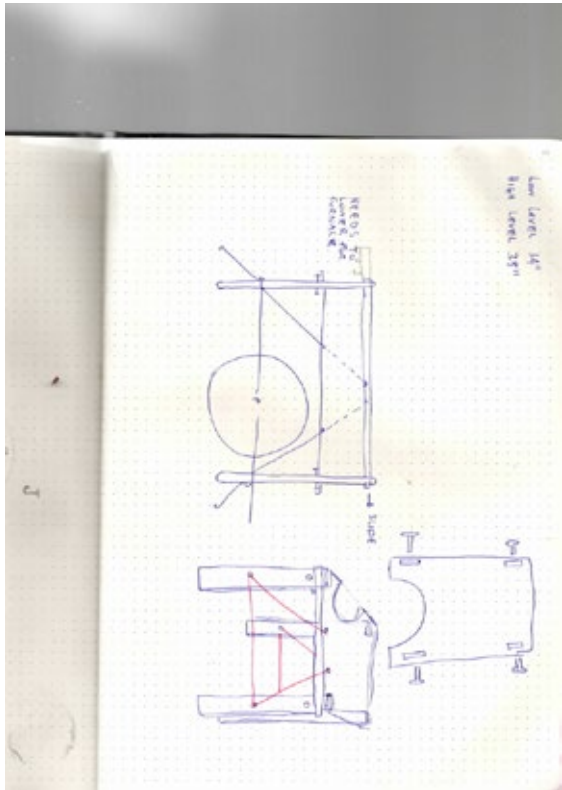






















MAQUETTE OF LONG SIDE PANEL WITH CHANNELS
TO BE ABLE TO MAKE WEATHER PROTECTOR











USING OLD ROAD SIGNS AND OFFCUTS OF ALUMNIUM TO CREATE THE CART MAKING IT LIGHTER THAN IF I HAD USED WOOD ALSO MORE ECONOMICAL AND RESOUCEFUL



MEASURING OUT CANVES FOR THE SIDE PANELS











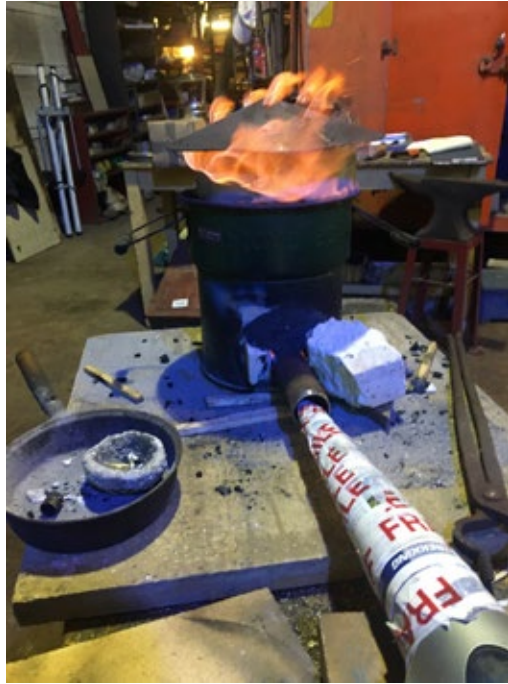
APRON AND BACK PANEL AND BENCH SKIN



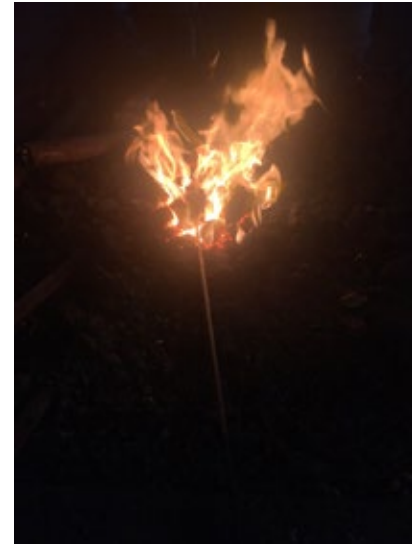


FURNACE AND TONGS

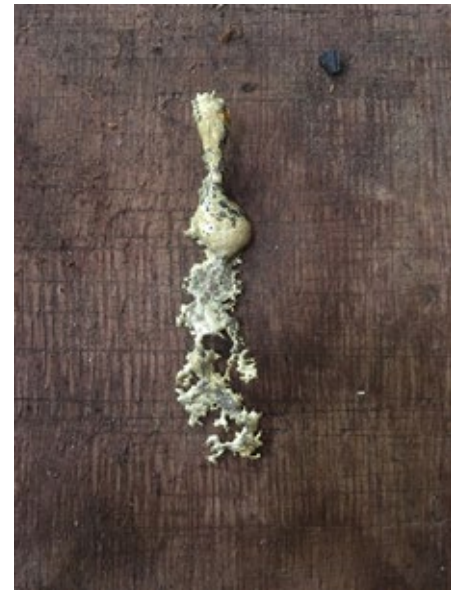
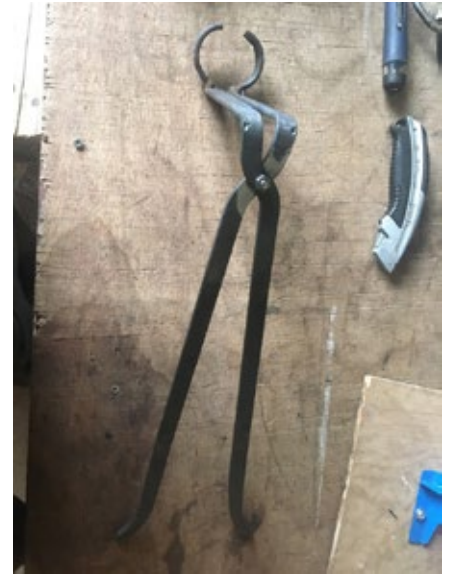




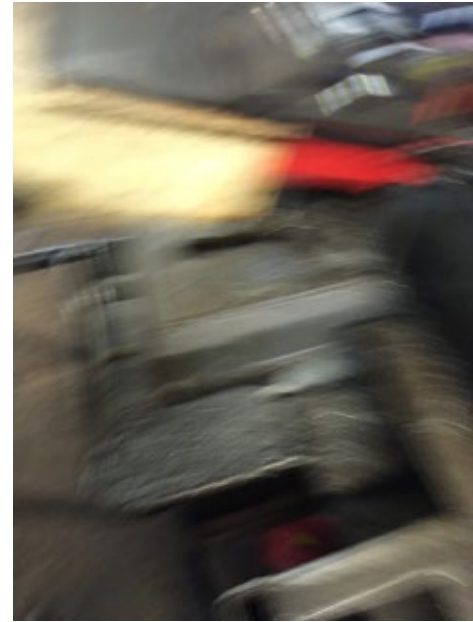






























CHARCOAL







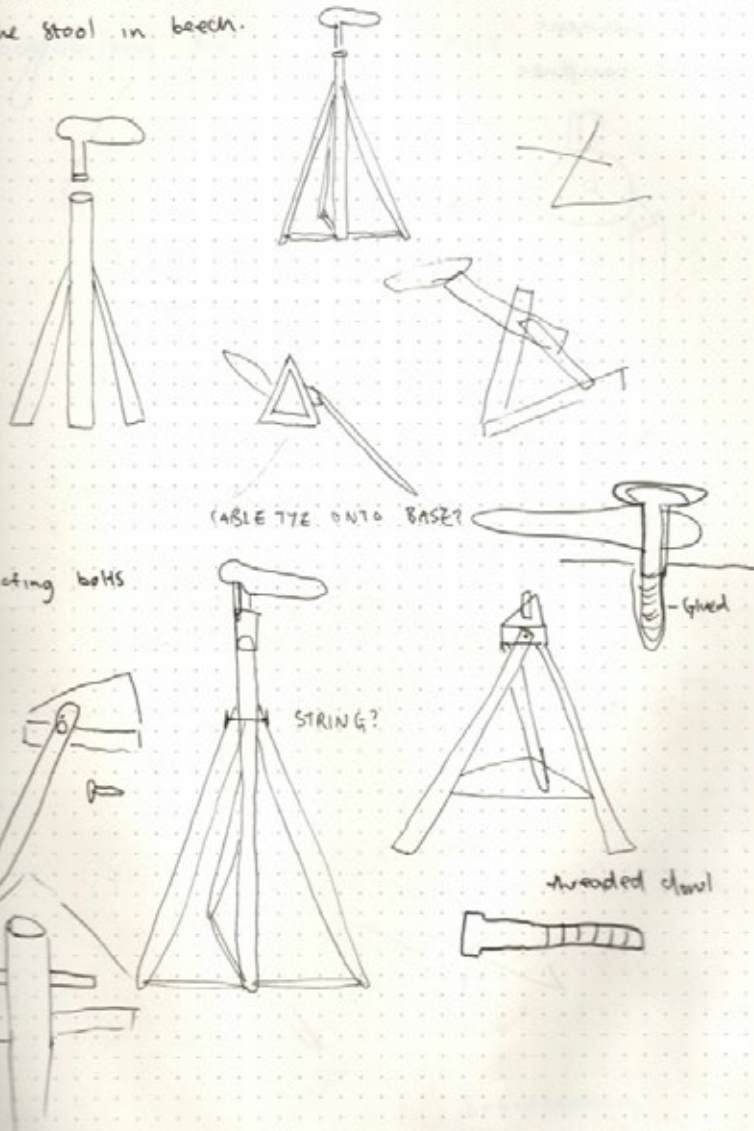
8th February 2020



Moments of contemplation as the charcoal was being made, by using slower processes you get to enjoy your surroundings more and eat sandwiches smoked from the top the wood we where using was applewood so it was very delicious.

STOOL

NAMRICH - HOVE
Make stool in beech.



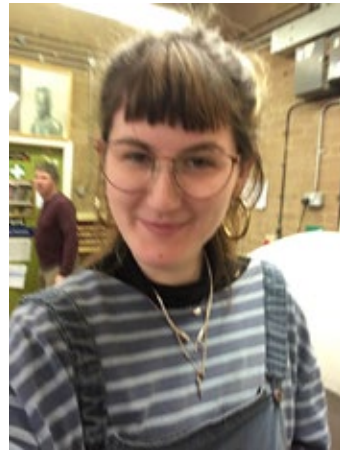
I wanted to make a stool that used minimal materials and used the seat of the bike. I did make a more refined one with turned lags but I think the one I bodged together was better as it had the language of just using whats around you from scraps.



12:33 17% fine-tools.com



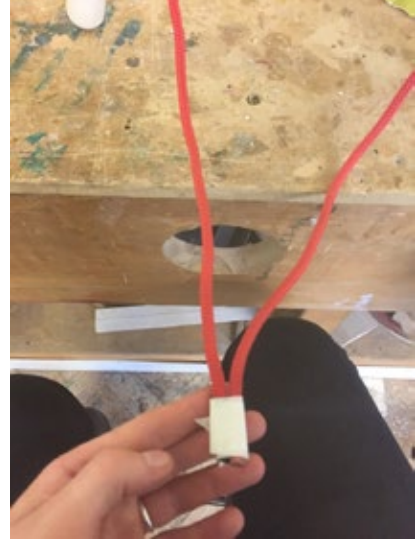
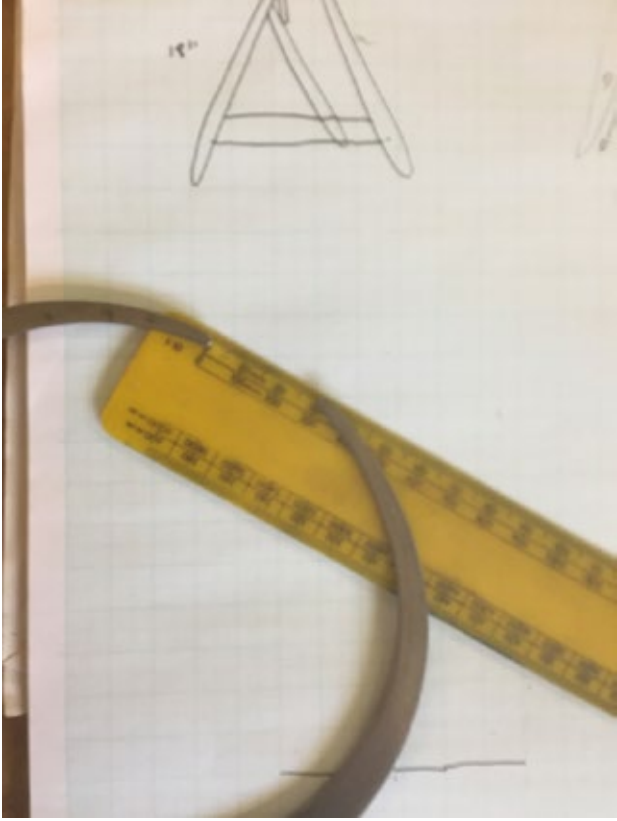
Beech, left















A little research I did into how I live on the boat how things are stored in a minimum way how things are used as many things, this informed the cart as I wanted to make each part of it have at least a couple of functions

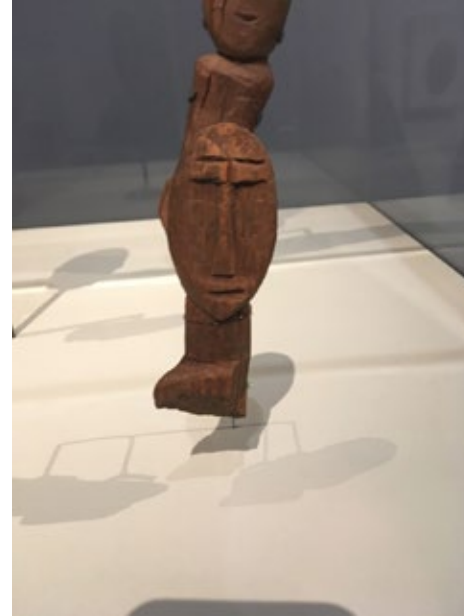
Faces on the Street



FINDING CHARACTERS IN EVERYDAY
LIFE I WAS THINKING OF COLLECTING
THESE IMAGES AND THEN USING
THEM AS INSPIRATION FOR CARVINGS
TO BE CAST IN JEWELRY.



MAX EARNEST WITH BIN FACE



Trip to the Sainsbury Centre really inspired me there is something about these little faces I am so attracted to maybe it is the universality of making each one tells a story.



CARVING THE BIN FACE INTO CHALK TO CAST INTO (IT DID NOT WORK)

EGGS AND CANS

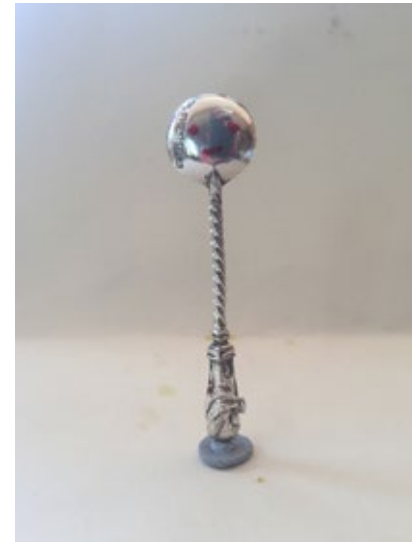
INITIALLY I WANTED TO MAKE JEWELLERY FROM THE CART BUT COMING HOME AND THINKING OF THE REASONING FOR MY PROJECT THIS FELT UNFITTING SO I BEGAN TO LOOK AT THE MATERIALS I HAD AROUND ME EGGS STOOD OUT AS I FELT THEY SYMBOLISED THE NEW BEGININGS I WANTED TO PORTRAY AND THE CANS I FOUND A LOT OF ON MY WANDERINGS I COULD STILL USE THE JEWELLERY TECHNIQUES I HAVE LEARNT TO MANIPULATE THEM





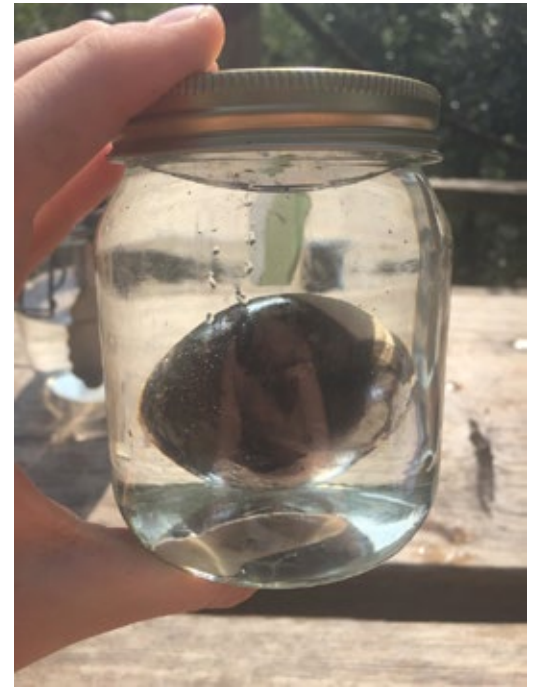


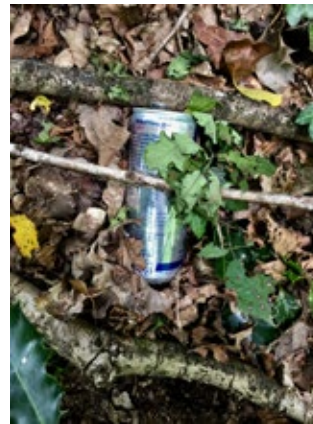
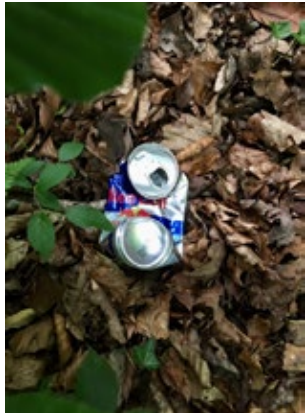
IMPRESSIONS OF ICONS AROUND THE HOUSE
USING TINFOIL THIS THEN PORGESSED TO ME
MAKING MY OWN ICONS FROM THE CANS





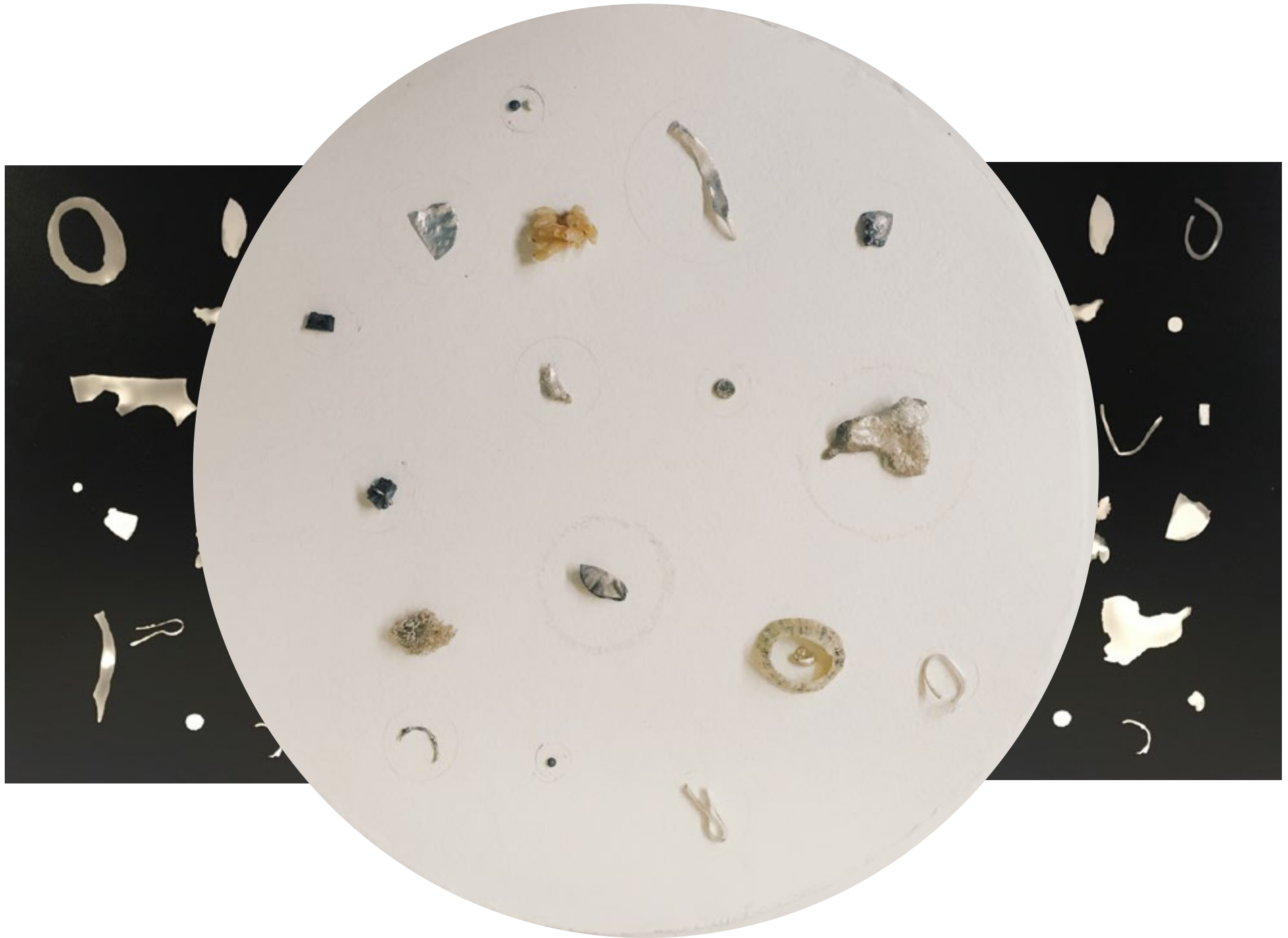


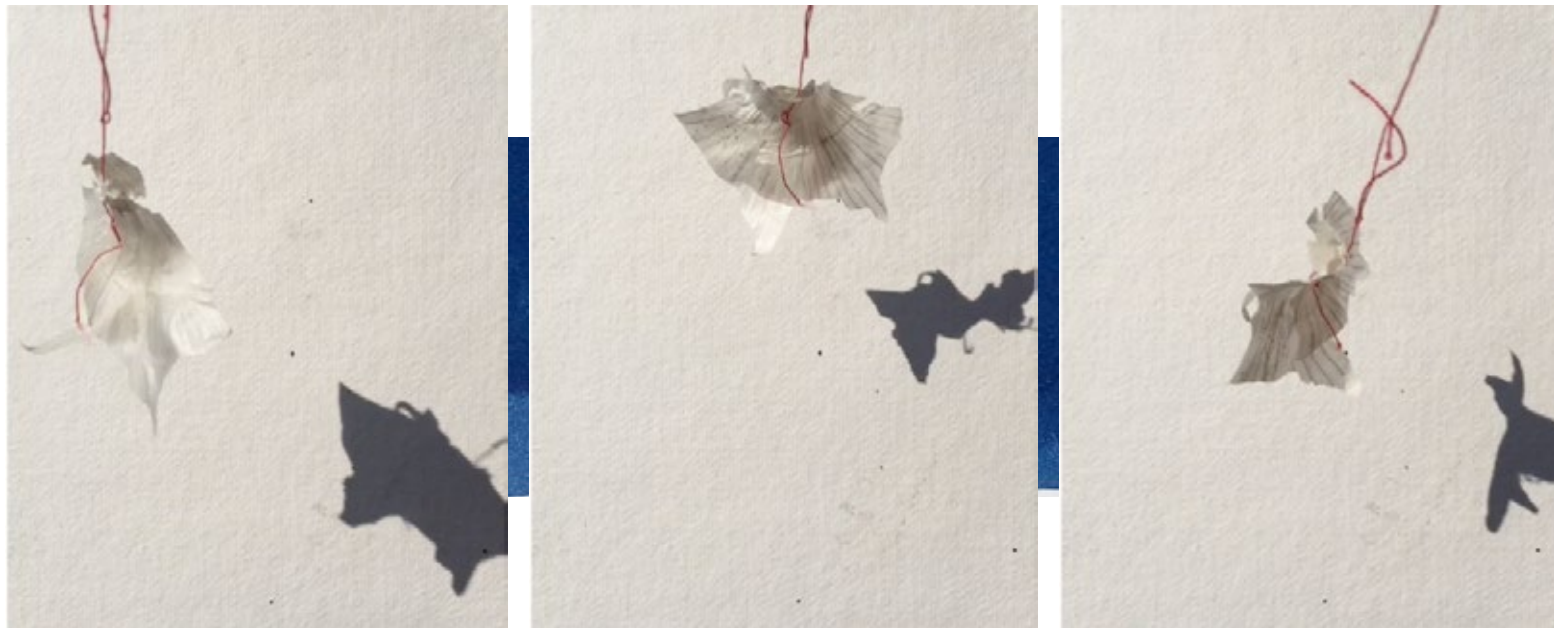






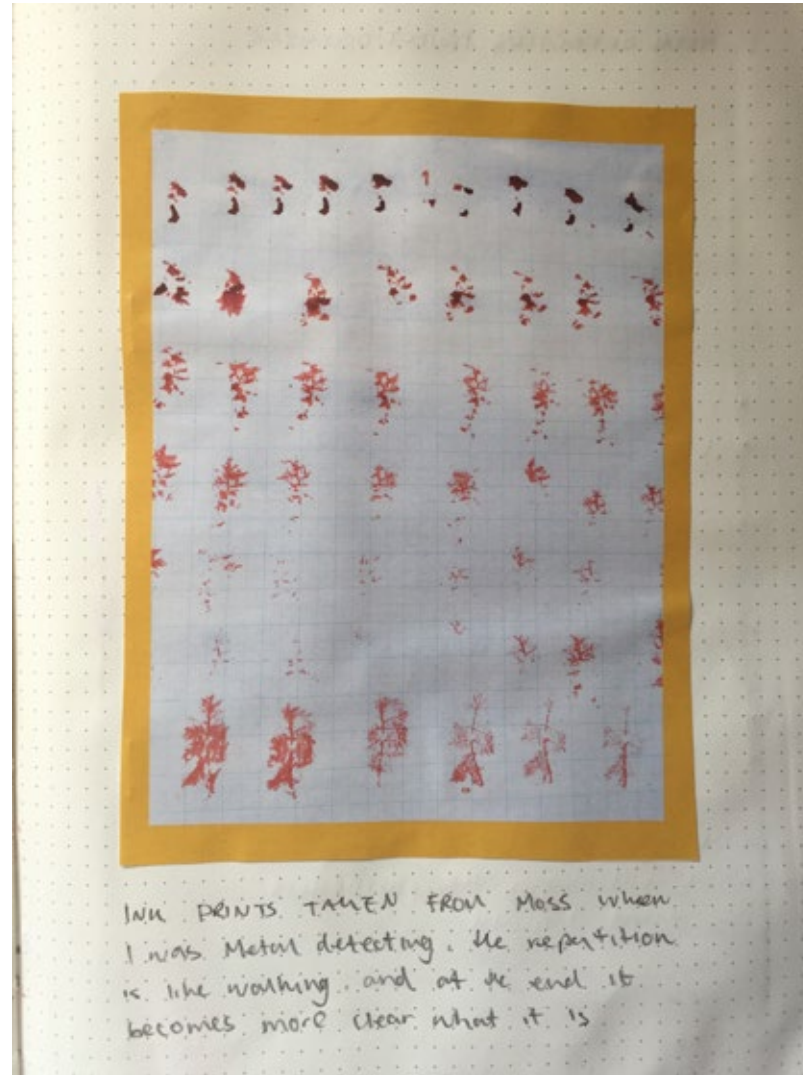
SILVER TEXTURE TESTS I DID AT THE BEGINNING WITH PHOTOGRAMS THIS LED ON TO THE USE OF CYANOTYPES TO DOCUMENT THE TRACES OF MY MAKING BUT A PROCESS I COULD USE OUTSIDE. INSTEAD OF USING TEXTURES I USED MATERIALS I HAVE FOUND INSEAD





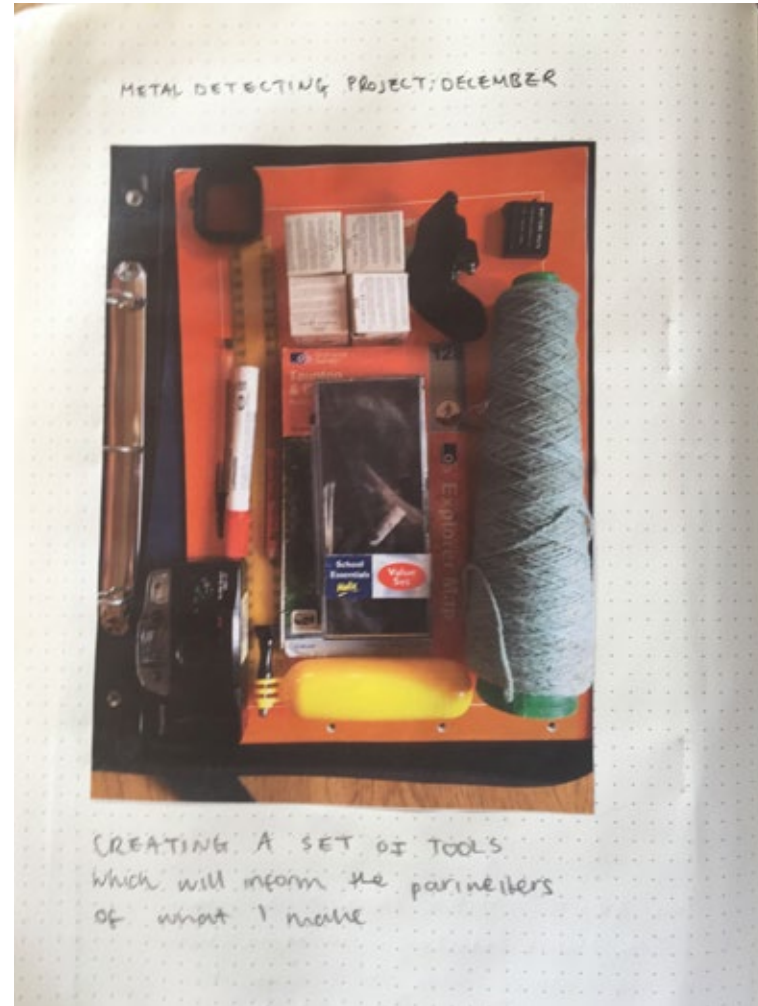
USING THINGS AROUND THE HOUSE TO MAKE SYMBOLS PEOPLE COULD READ INSPIRED BY THOSE LEFT BY GYPSIES WHEN TELLING OTHERS IN THE GROUP ABOUT A PLACES IN SECRET WAYS. THIS REPRESENTS FOR ME HEALING WITH THE USE OF GARLIC.

Metal Detecting



INK PRINTS TAKEN FROM Moss when I was Metal detecting. The repetition is like washing, and at the end it becomes more clear what it is







STRING AND STICKS: MADE AROUND
Areas that caught my attention
Taking reference of Archeology



The drawing tool is the leaf and
the medium the ink like a blueprint
plan of a house almost

Planning Things

1. What is the purpose of the research plan?

The purpose of the research plan is to provide a clear and concise overview of the research project. It serves as a roadmap for the researcher, outlining the objectives, methods, and expected outcomes of the study. The research plan also helps to identify potential challenges and develop strategies to address them.

2. What are the key components of a research plan?

The key components of a research plan include:

- Introduction:** Provides background information on the research topic and states the research objectives.
- Literature Review:** Summarizes existing research on the topic and identifies gaps in the knowledge.
- Methodology:** Describes the research methods, data collection techniques, and analysis procedures.
- Results and Discussion:** Presents the findings of the study and discusses their implications.
- Conclusion:** Summarizes the main findings and provides recommendations for future research.

3. How do you develop a research plan?

Developing a research plan involves several steps:

- Identify the research topic:** Choose a topic that is interesting, relevant, and has sufficient resources available.
- Conduct a literature review:** Search for and read relevant research papers to understand the current state of the field.
- Formulate research objectives:** Define the specific goals and questions that the research aims to address.
- Design the methodology:** Determine the most appropriate research methods and data collection techniques.
- Write the research plan:** Organize the information into a clear and concise document.
- Review and revise:** Seek feedback from peers and supervisors to improve the quality of the plan.

4. Why is it important to have a research plan?

Having a research plan is important for several reasons:

- Clarity and focus:** It helps to define the research objectives and stay focused on the main goals of the study.
- Organization:** It provides a structured framework for organizing the research process and managing time effectively.
- Communication:** It serves as a communication tool for sharing the research plan with peers, supervisors, and funding agencies.
- Problem-solving:** It helps to identify potential challenges and develop strategies to address them.
- Documentation:** It provides a record of the research process, which can be useful for future reference and reporting.

Chrome File Edit View

Study Materials AD

studentcentral

1. What is the purpose of the research plan?

The purpose of the research plan is to provide a clear and concise overview of the research project. It serves as a roadmap for the researcher, outlining the objectives, methods, and expected outcomes of the study. The research plan also helps to identify potential challenges and develop strategies to address them.

2. What are the key components of a research plan?

The key components of a research plan include:

- Introduction:** Provides background information on the research topic and states the research objectives.
- Literature Review:** Summarizes existing research on the topic and identifies gaps in the knowledge.
- Methodology:** Describes the research methods, data collection techniques, and analysis procedures.
- Results and Discussion:** Presents the findings of the study and discusses their implications.
- Conclusion:** Summarizes the main findings and provides recommendations for future research.

3. How do you develop a research plan?

Developing a research plan involves several steps:

- Identify the research topic:** Choose a topic that is interesting, relevant, and has sufficient resources available.
- Conduct a literature review:** Search for and read relevant research papers to understand the current state of the field.
- Formulate research objectives:** Define the specific goals and questions that the research aims to address.
- Design the methodology:** Determine the most appropriate research methods and data collection techniques.
- Write the research plan:** Organize the information into a clear and concise document.
- Review and revise:** Seek feedback from peers and supervisors to improve the quality of the plan.

4. Why is it important to have a research plan?

Having a research plan is important for several reasons:

- Clarity and focus:** It helps to define the research objectives and stay focused on the main goals of the study.
- Organization:** It provides a structured framework for organizing the research process and managing time effectively.
- Communication:** It serves as a communication tool for sharing the research plan with peers, supervisors, and funding agencies.
- Problem-solving:** It helps to identify potential challenges and develop strategies to address them.
- Documentation:** It provides a record of the research process, which can be useful for future reference and reporting.

Study of the...
 Summary...
 Methods...
 Results...
 Discussion...
 Conclusion...

UOB 30 D&C L6 RESEARCH PLANNER

1. What is the purpose of the research plan?

2. What are the key components of a research plan?

3. How do you develop a research plan?

4. Why is it important to have a research plan?

1. What is the purpose of the research plan?

2. What are the key components of a research plan?

3. How do you develop a research plan?

4. Why is it important to have a research plan?

1. What is the purpose of the research plan?

2. What are the key components of a research plan?

3. How do you develop a research plan?

4. Why is it important to have a research plan?

September 2019

24 Tuesday

10 am in Room 202 - overview

25 Wednesday

10 am in 204 - Dis

26 Thursday

10 am in 204 - induction

28 Friday

10 am - Dorset Place 501

tea party

29 Saturday

Work 9-CL

29 Sunday

Work 7-3

30 Monday 30

METEL WORKSHOP CREATG 10 am

130 Tuesday 1

Prof Pratt 10 am 204

12:30 Sallis Benny

31 Wednesday 2

Group tutorial 324e

SEP/OCT

3 Thursday

4 Friday

6 pm Private view Hove Museum

MEETING WITH AVRIL 12 pm metal office

5 Saturday

On the point meeting 2 pm

6 Sunday

7 Monday

27 Sunday	OCT	NOVEMBER
28 Monday		Friday
Course Event morning		
29 Tuesday		Saturday
		Sunday
30 Wednesday		Monday
Essay tutorial - 3pm		in Pecha kucha hand in
31 Thursday		Tuesday
		Pecha kucha presentation
		5:30 - workshop

9 Sunday // Monday // Tuesday	11
Art II	
2pm group reviews set up half an hour before	16 meeting
5:30 word statement	and tripod + films
Group Meeting Photo 3pm	
10 Monday // Tuesday // Wednesday	13
	MEETING 3pm / 2:30. <u>OUT</u>
11 Tuesday // Wednesday // Thursday	14
Fabrica meeting 5:30 ✓	Swanberg Ring Walk
10-12 Art group	
Art meeting	
13	

NOV	NOV	NOV
16 Saturday	21 Thursday	
17 Sunday	22 Friday	
Come back from Macedonia	Review.	
18 Monday	23 Saturday	
	Maybe go gummies?	
19 Tuesday	24 Sunday	
Craft stool	25 Monday	
20 Wednesday		
PT 104 10am		

RESOLUTION.

DUE TO CONVID I HAVE NOT BEEN ABLE TO DO ANY JOUNERYYS BUT THIS SUMMER I PLAN TO I AM EXCITED TO SEE WHERE THE CART TAKES ME AS I THINK THIS COULD BE QUITE AN OPEN ENDED PROJECT.

