

DEGREE SHOW DISPLAY PROPOSAL

AD323 PROFESSIONAL PRACTICE

JI IN BYUN



Ji-in Byun

L6 BA Hons 3D Design and Craft

We are all strangers, so we talk through objects.

My work explores what happens around dining, especially the act of eating with other people, who may be strangers, and making new relationships between themselves and the tableware objects.

The objects we engage with can embody emotion and convey our feelings as well as determining how we behave. The objects create the situation and the narrative. I bring attention to our relationship with tableware and dining as a new way of communication.

These tableware pieces aim to create new behaviours during mealtimes. By doing so, we can engage in new experiences, relationships and memories between those who participate in the meal. This work encourages diners to play with the objects whilst they eat. This interaction generates a new dining experience giving the diner their own daily dinner story.

These experimental tableware pieces create an intimacy, romantic, sociable, and playful atmosphere by sharing and eating the food at your table.

Dissertation Title: Contemporary Craft: What happens between object and audience?

EXAMPLES OF OTHER ARTISTS' WORK



MARIJE VOGELZANG
- Sharing Dinner 2005
one-day event
(Christmas dinner party)

Experience,
Installation
Performance.



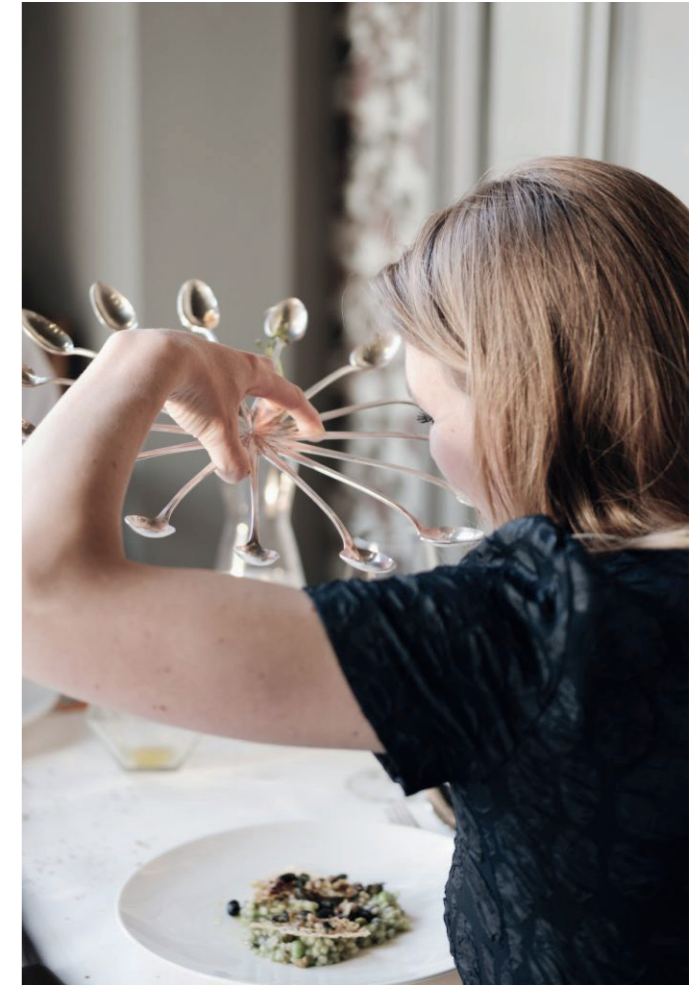
KETHLEEN REILLY
- Way of Serving 2017



Steinbeisser (with Philip Rachinger and Felix Schellhorn chefs), 2019 Wien



Steinbeisser (with Alexandre Gauthier chef), 2018 Amsterdam



André Chiang (Raw**) 2019 Amsterdam



Fabian Raffeiner (Meridiano*) and Simon Apothéloz (Eisblume*) 2018 Bern



The place where the event is held and the meal is not different from the usual case, but only the tableware is not normal. Food and tableware objects are served by a waiter or chef, just like general restaurants.

It is served mixed with ordinary tableware.

I had several objects, so it was difficult to imagine the display of the exhibition without actual objects. So I made a model of each object with the same scale. Then I was able to simulate various versions of the display.

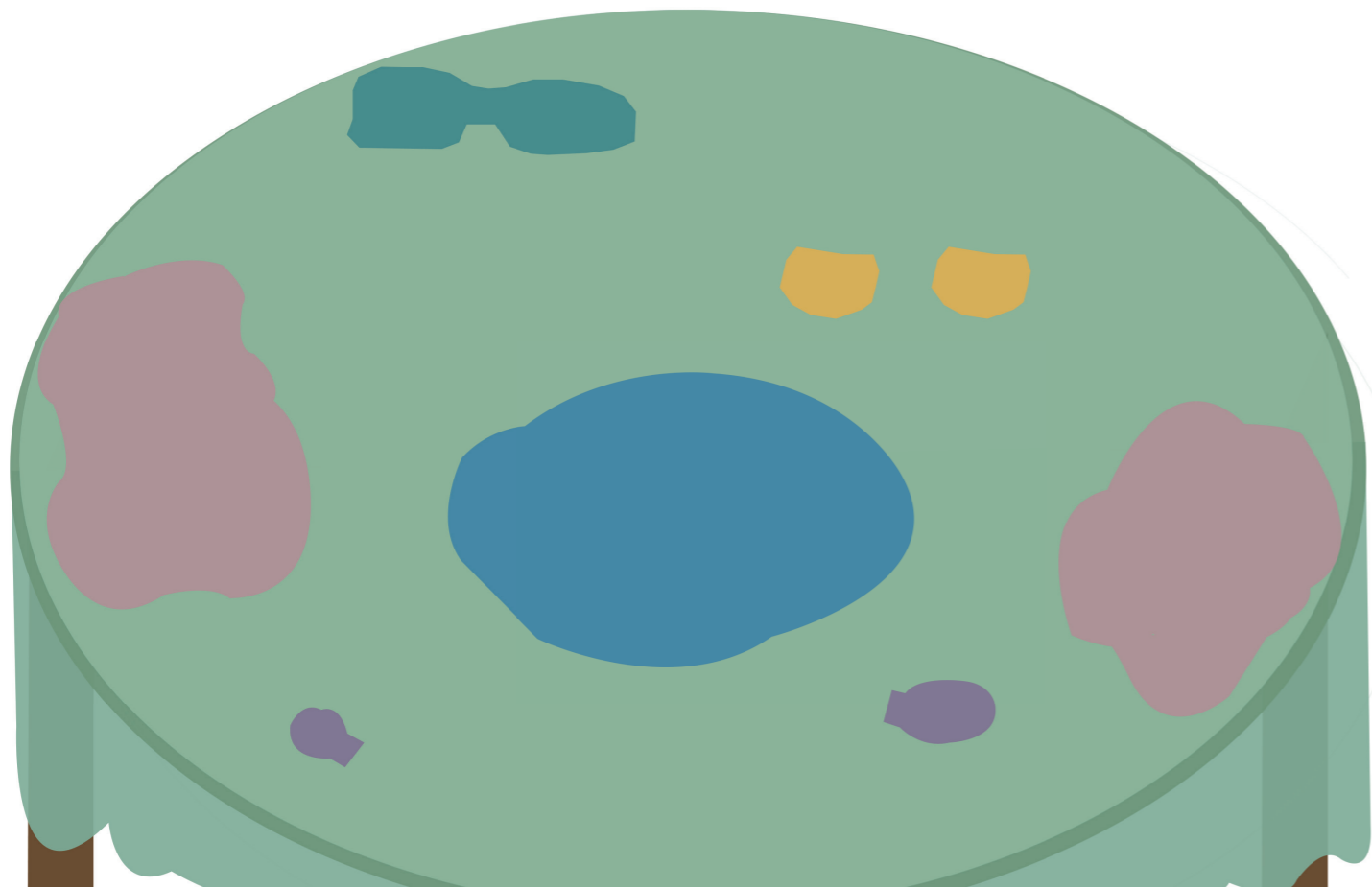


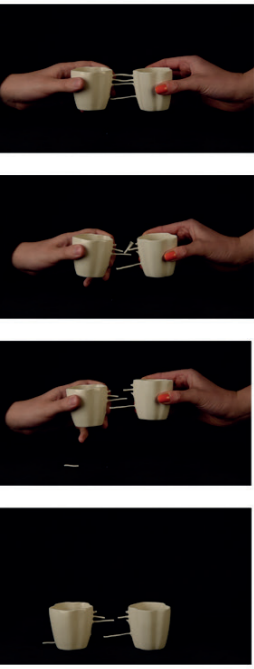
Display my experimental tableware mixed with ordinary tableware (water bottle, flower and spoon and knife.) In order to look like an usual dining table! It will help people pay attention to what I want to show, a specific role of the object compared with original tableware.



TABLECLOTH

I was not able to make a real tablecloth model when I make other objects, however, a tablecloth will use in my degree show display.





PLAY THE VIDEO :
Mealtime with my tablewares





PLAY THE VIDEO :
Mealtime with my tablewares



In the future,
I want to organize the dining event with my experimental
tablewares. Just as we choose a tableware and cutlery before a
meal, People choose the chain (pull and push fork) they want.
There are various types of cups in the cabinet next to it.
Select the desired color and shape of cups, and move them to the
table.
Then, they set the table according to the abstract shape drawn on
the tableware.
The meal is all set.
Choose a menu.
The meal begins.

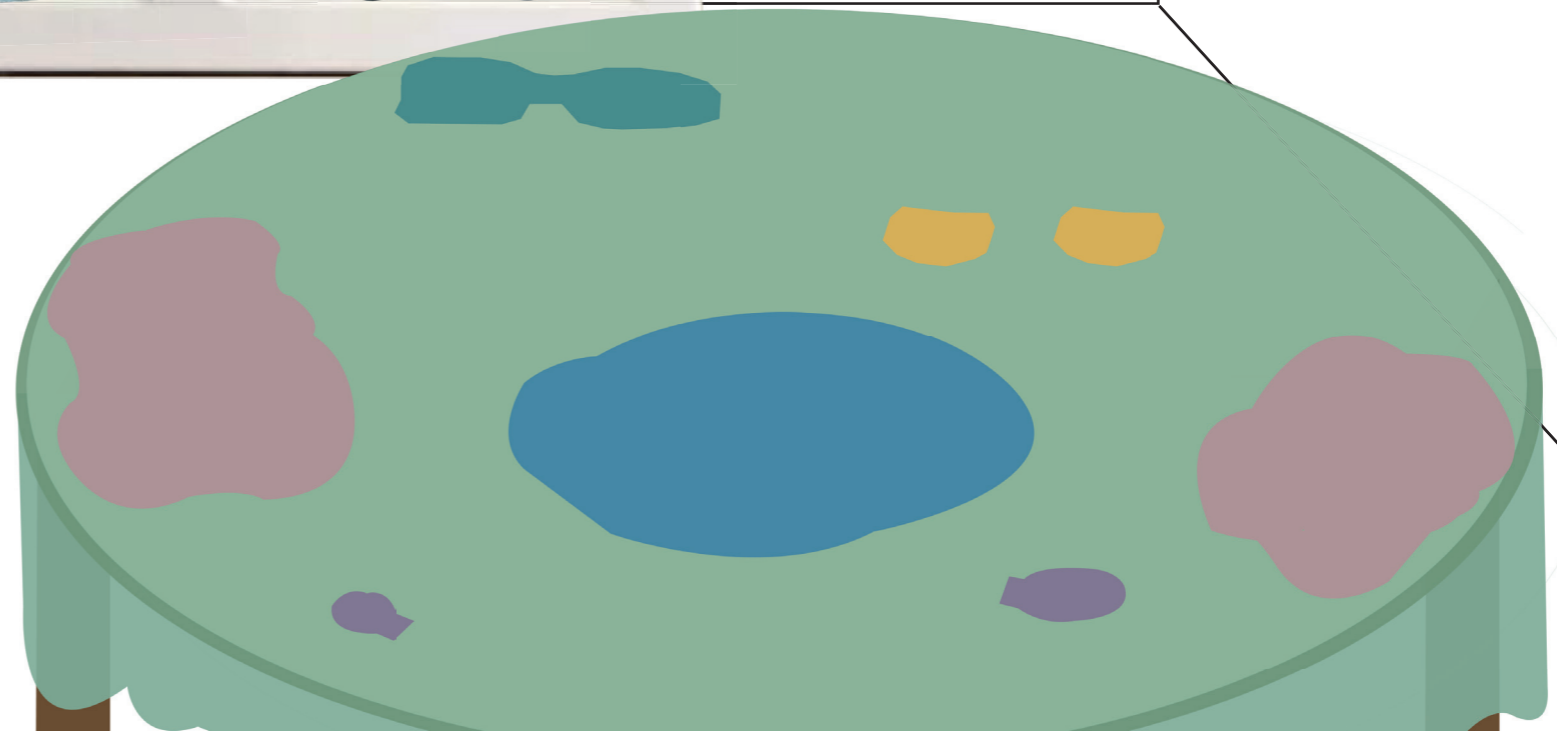
EVENT VENUE 1.





A tablecloth with abstract drawings will figuratively indicate the location and use of each tableware object.

EVENT VENUE 3.



BIBLIOGRAPHY

-<https://marijevogelzang.nl/>
-<https://www.kathleenreilly.co.uk/>
-<https://steinbeisser.org/>

Image Source

1. <https://www.pinterest.co.kr/pin/286893438751712632/r51.raiseyouraim.com>
2. https://www.pinterest.co.kr/pin/AcXsPDzQTi0w0AjMER_Nqsbr04Kl8ar8csKr2DsBCuYyLjckC-v0m0o/catesthill.com
3. [https://www.pinterest.co.kr/pin/286893438751712612/Isobel Coffee Table](https://www.pinterest.co.kr/pin/286893438751712612/Isobel%20Coffee%20Table)
4. <https://www.pinterest.co.kr/pin/286893438751712615/>
<https://aninterioraffair.residencemagazine.se/hemma-hos-kim-kanye-i-hidden-hills/>
5. <https://www.pinterest.co.kr/pin/144396731789945890/danielrueda.net>