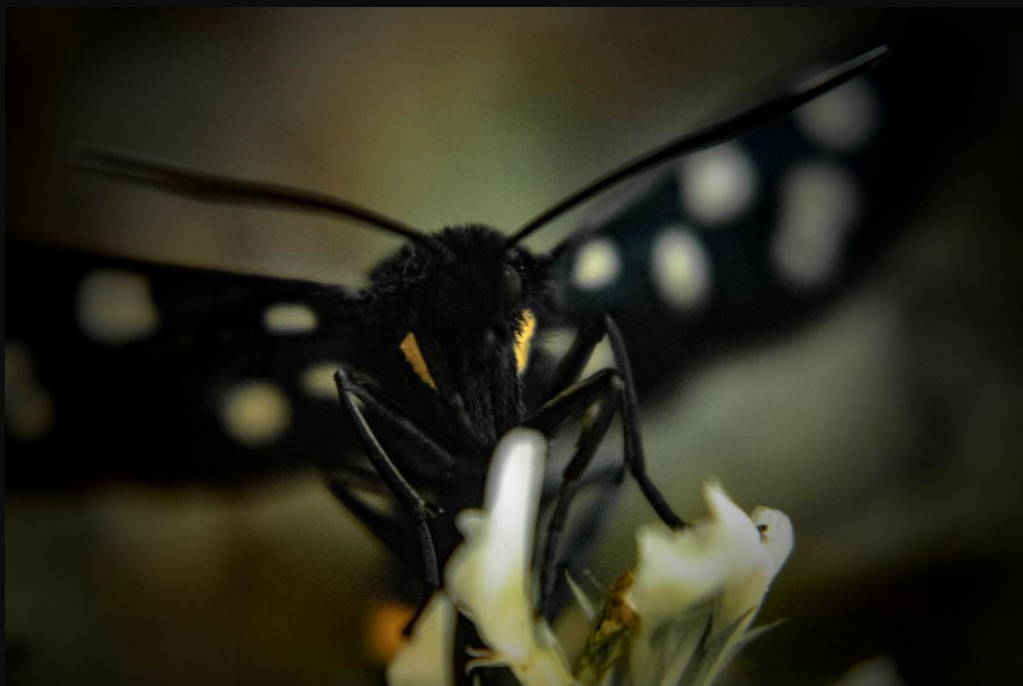
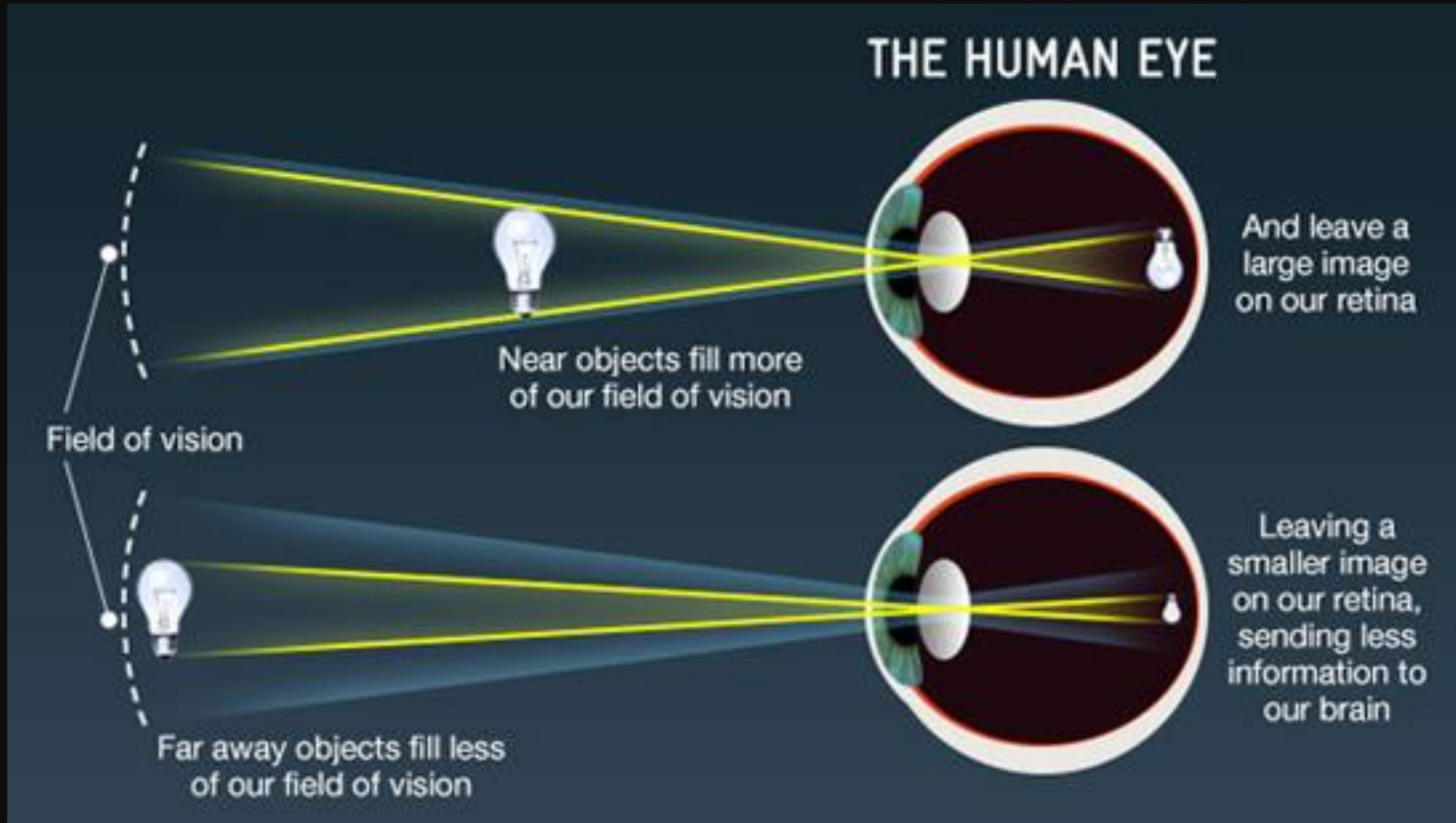


# Layers

By Dale Mass



# Interaction



The Human Eye diagram - How do telescopes let us see so far into space? BBC  
(18 June 2014)





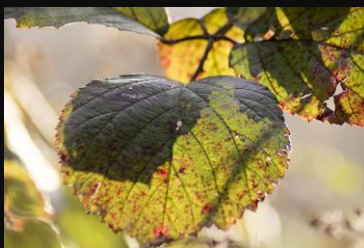
6000X4000

D  
I  
S  
T  
A  
N  
C  
E

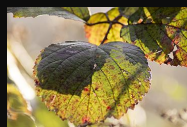


6000X4000

A  
W  
A  
Y



720X480

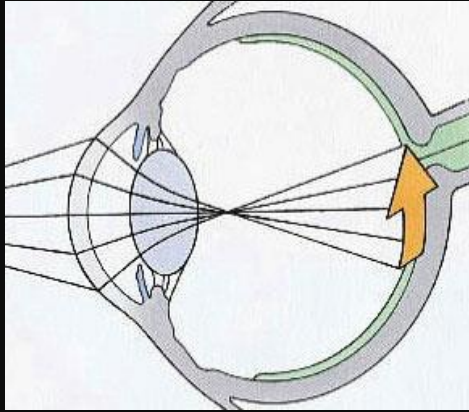


310X240

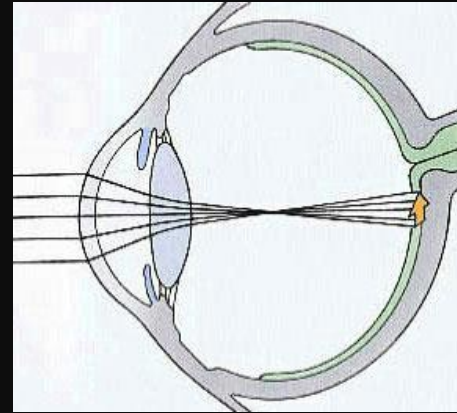


310X240 (Upscaled)





Elongated lens focusing on farther objects.



Rounded lens focusing on near objects.









Translucent







